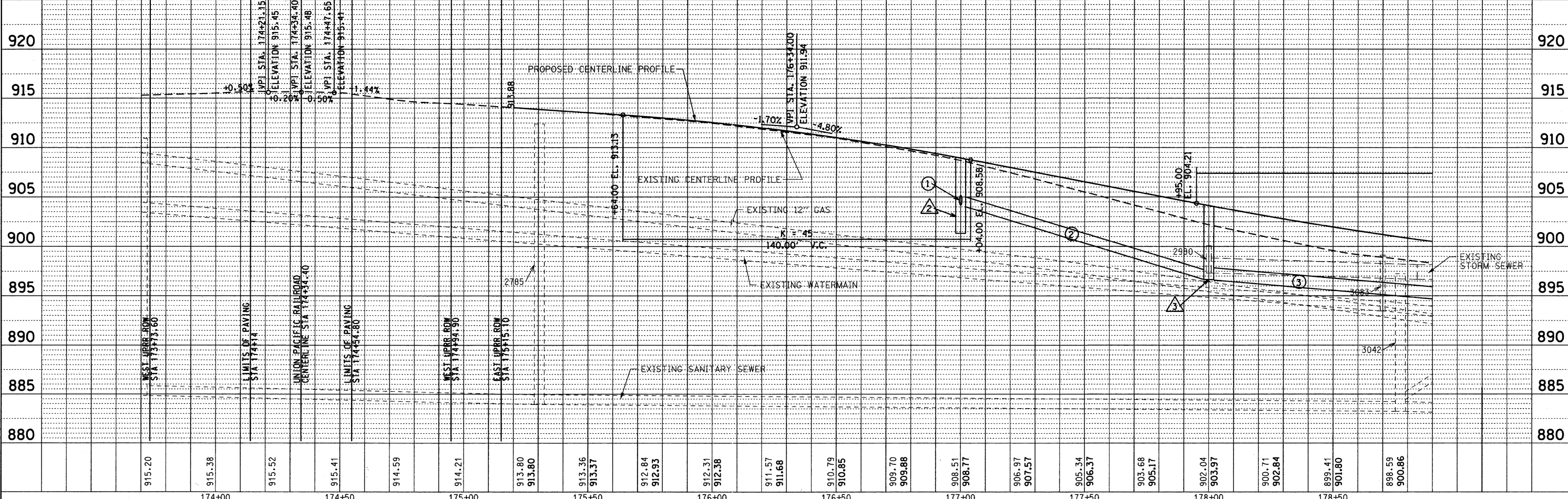
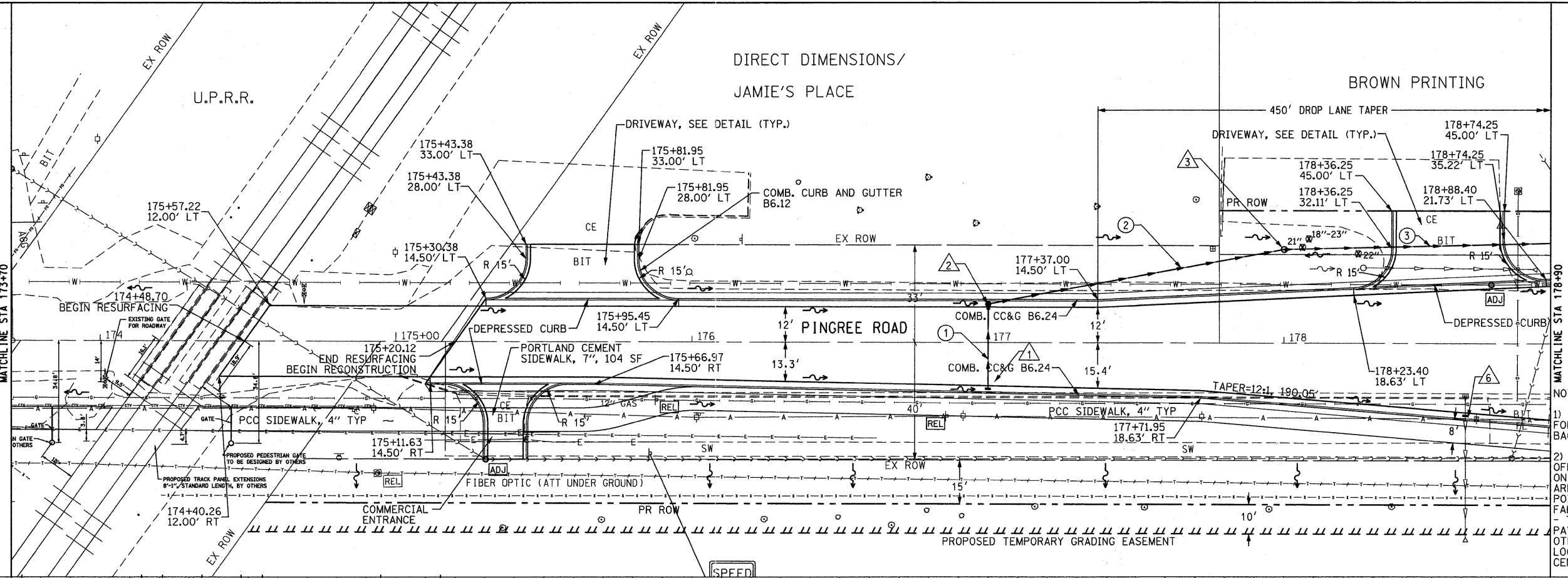


- 1 INLET, TYPE A
F/L=908.37
177+00.00, 15.68'RT
INV:904.30, 12"E
- 2 CB, TYPE A
F/L=908.41
177+00.00, 13.00'LT
INV:904.00, 12"W
INV:904.00, 12"S
- 3 MH, TYPE A, 4'Ø
F/L=901.19
178+00, 32.75'LT
INV:896.50, 12"N
INV:896.50, 15"S
- 6 INLET, TYPE A
F/L=901.03
178+61.34, 23.54'RT
INV:894.84, 12"E

- 1 29LF STORM SEW
CL A 2 12 @ 1.00%
- 2 102LF STORM SEWER
(WATER MAIN
REQUIREMENTS) 12"
@ 7.35%
- 3 185LF STORM SEW
CL A 2 15 @ 2.16%

PLAN	DATE
BY	
REVISION	
NO.	

PROFILE	DATE
BY	
REVISION	
NO.	



- NOTES:
- STATION/OFFSET CALLS FOR ROADWAY MEASURED TO BACK OF CURB.
 - STORM WATER STRUCTURE OFFSET LOCATIONS GIVEN ON THE DETAILED PLANS ARE TO THE FOLLOWING POINTS: A) FOR STRUCTURES FALLING IN THE CURB LINE - TO THE EDGE OF PAVEMENT; B) FOR ALL OTHER STRUCTURE LOCATIONS - TO THE CENTER OF THE STRUCTURE

FILE NAME = F:\396-064 Pingree Road\CADD\Sheets\1dot	USER NAME = cesario	DESIGNED - BD	REVISED -	STATE OF ILLINOIS DEPARTMENT OF TRANSPORTATION	PINGREE ROAD RECONSTRUCTION PLAN AND PROFILE / PINGREE ROAD	F.A.U. RTE. 126	SECTION 95-00090-01-FP	COUNTY McHENRY	TOTAL SHEETS 92	SHEET NO. 20		
PLOT SCALE = 20,000' / IN.	CHECKED - BD	REVISED -	HORIZ. 1"=20'			SCALE: VERT. 1"=5'	SHEET NO. 20 OF 92 SHEETS	STA. 173+70	TO STA. 178+90	CONTRACT NO. 63519		
PLOT DATE = 9/14/2011	DATE - 08-29-2011	REVISED -				ILLINOIS FED. AID PROJECT						