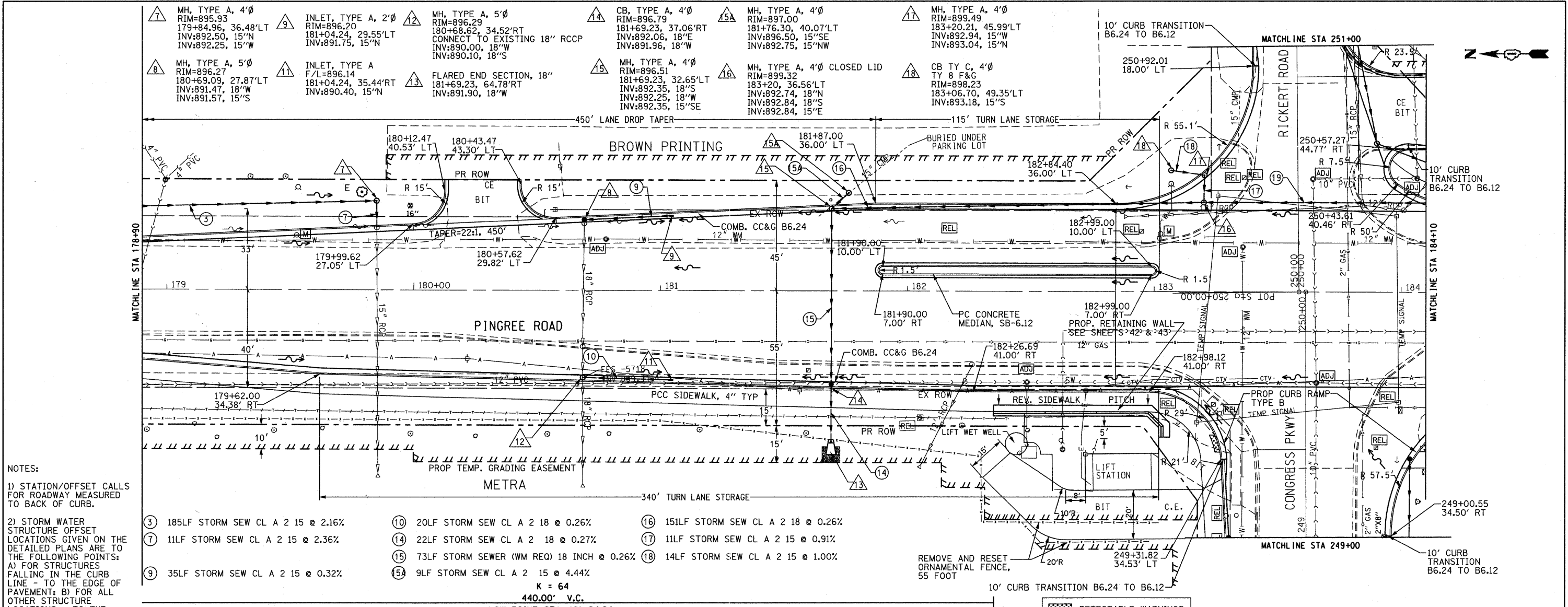


DATE	
BY	
REVISIONS	
NO.	
DESCRIPTION	
DATE	
BY	
NO.	
DESCRIPTION	
DATE	
BY	
NO.	
DESCRIPTION	

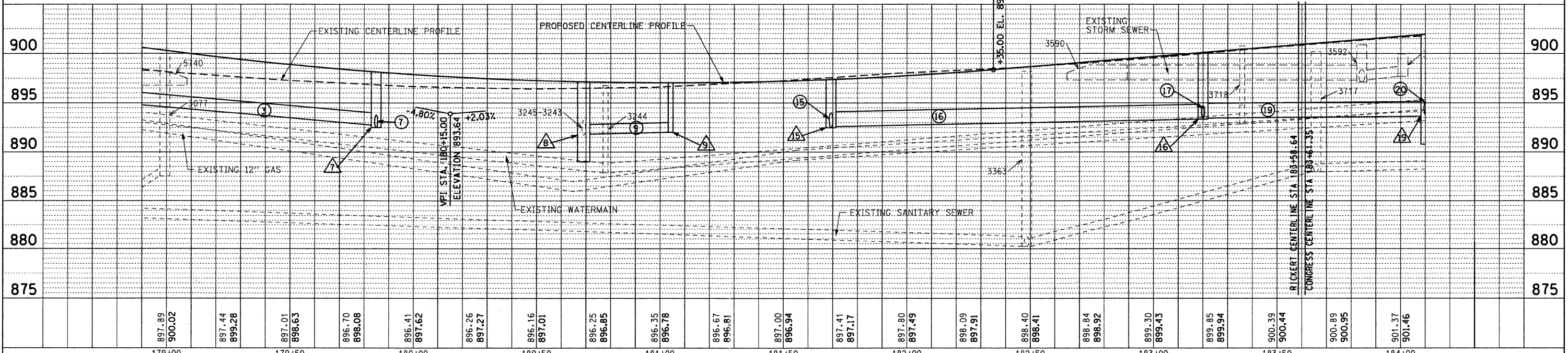
DATE	
BY	
REVISIONS	
NO.	
DESCRIPTION	
DATE	
BY	
NO.	
DESCRIPTION	
DATE	
BY	
NO.	
DESCRIPTION	



- NOTES:**
- STATION/OFFSET CALLS FOR ROADWAY MEASURED TO BACK OF CURB.
  - STORM WATER STRUCTURE OFFSET LOCATIONS GIVEN ON THE DETAILED PLANS ARE TO THE FOLLOWING POINTS: A) FOR STRUCTURES FALLING IN THE CURB LINE - TO THE EDGE OF PAVEMENT; B) FOR ALL OTHER STRUCTURE LOCATIONS - TO THE CENTER OF THE STRUCTURE

- |   |                                   |    |   |    |                                   |
|---|-----------------------------------|----|---|----|-----------------------------------|
| 3 | 185LF STORM SEW CL A 2 15 @ 2.16% | 10 | 20LF STORM SEW CL A 2 18 @ 0.26%          | 16 | 151LF STORM SEW CL A 2 18 @ 0.26% |
| 7 | 11LF STORM SEW CL A 2 15 @ 2.36%  | 14 | 22LF STORM SEW CL A 2 18 @ 0.27%          | 17 | 11LF STORM SEW CL A 2 15 @ 0.91%  |
| 9 | 35LF STORM SEW CL A 2 15 @ 0.32%  | 15 | 73LF STORM SEWER (WM REQ) 18 INCH @ 0.26% | 18 | 14LF STORM SEW CL A 2 15 @ 1.00%  |
|   |                                   | 5A | 9LF STORM SEW CL A 2 15 @ 4.44%           |    |                                   |

K = 64  
440.00' V.C.  
LOW POINT STA. 181+04.24  
LOW POINT ELEV 896.78



FILE NAME =	USER NAME = cesario	DESIGNED - BD	REVISED -
F:\396-064 Pingree Road\CADD\Sheets\1.dwg	format\163519-sht-plnprf_3.dgn	DRAWN - DC	REVISED -
	PLOT SCALE = 20.000' / IN.	CHECKED - BD	REVISED -
	PLOT DATE = 9/14/2011	DATE - 08-29-2011	REVISED -

**STATE OF ILLINOIS  
DEPARTMENT OF TRANSPORTATION**

**PINGREE ROAD RECONSTRUCTION  
PLAN AND PROFILE / PINGREE ROAD**  
HORIZ. 1"=20'  
SCALE: VERT. 1"=5'  
SHEET NO. 21 OF 92 SHEETS  
STA. 178+90 TO STA. 184+10

F.A.U. RTE.	SECTION	COUNTY	TOTAL SHEETS	SHEET NO.
126	95-00090-01-FP	McHENRY	92	21
CONTRACT NO. 63519			ILLINOIS FED. AID PROJECT	