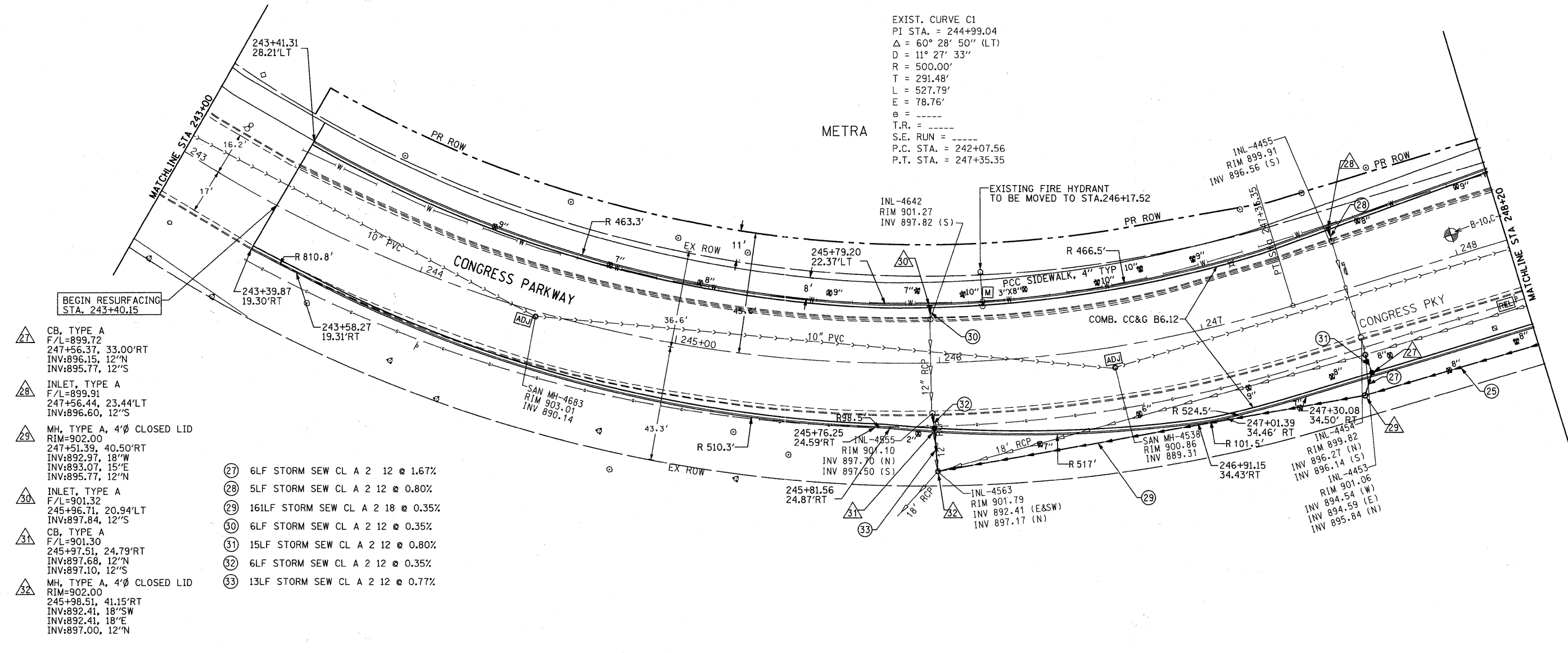


DATE	
BY	
REVISIONS	
NO.	
DESCRIPTION	
DATE	
BY	
REVISIONS	
NO.	
DESCRIPTION	
DATE	
BY	
REVISIONS	
NO.	
DESCRIPTION	
DATE	
BY	
REVISIONS	
NO.	
DESCRIPTION	
DATE	
BY	
REVISIONS	
NO.	
DESCRIPTION	

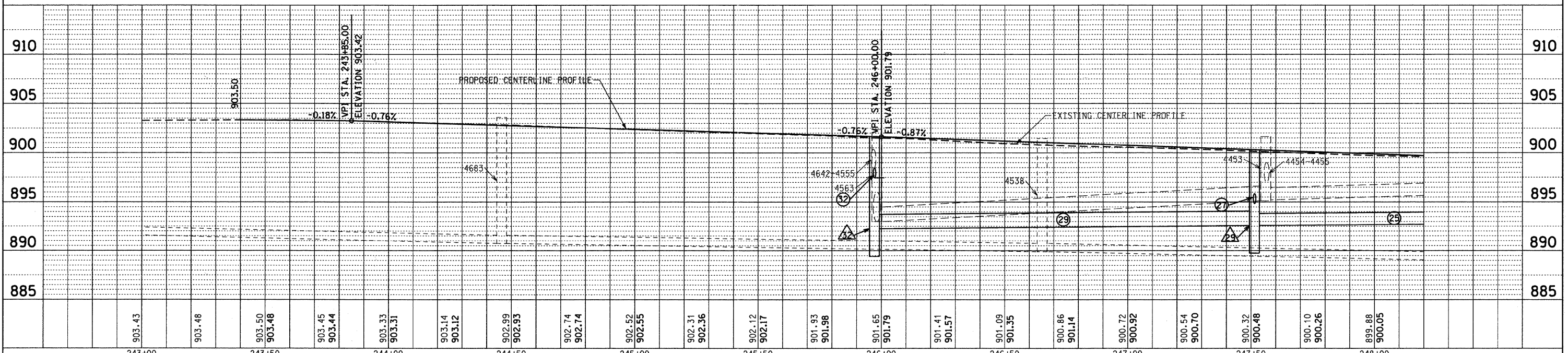
DATE	
BY	
REVISIONS	
NO.	
DESCRIPTION	
DATE	
BY	
REVISIONS	
NO.	
DESCRIPTION	
DATE	
BY	
REVISIONS	
NO.	
DESCRIPTION	
DATE	
BY	
REVISIONS	
NO.	
DESCRIPTION	

EXIST. CURVE C1
 PI STA. = 244+99.04
 $\Delta = 60^\circ 28' 50''$ (LT)
 $D = 11^\circ 27' 33''$
 $R = 500.00'$
 $T = 291.48'$
 $L = 527.79'$
 $E = 78.76'$
 $e = \text{---}$
 $T.R. = \text{---}$
 $S.E. RUN = \text{---}$
 $P.C. STA. = 242+07.56$
 $P.T. STA. = 247+35.35$

METRA



- △27 CB, TYPE A
F/L=899.72
247+56.37, 33.00'RT
INV:896.15, 12"N
INV:895.77, 12"S
- △28 INLET, TYPE A
F/L=899.91
247+56.44, 23.44'LT
INV:896.60, 12"S
- △29 MH, TYPE A, 4'Ø CLOSED LID
RIM=902.00
247+51.39, 40.50'RT
INV:892.97, 18"W
INV:893.07, 15"E
INV:895.77, 12"N
- △30 INLET, TYPE A
F/L=901.32
245+96.71, 20.94'LT
INV:897.84, 12"S
- △31 CB, TYPE A
F/L=901.30
245+97.51, 24.79'RT
INV:897.68, 12"N
INV:897.10, 12"S
- △32 MH, TYPE A, 4'Ø CLOSED LID
RIM=902.00
245+98.51, 41.15'RT
INV:892.41, 18"SW
INV:892.41, 18"E
INV:897.00, 12"N
- 27 6LF STORM SEW CL A 2 12 @ 1.67%
- 28 5LF STORM SEW CL A 2 12 @ 0.80%
- 29 16ILF STORM SEW CL A 2 18 @ 0.35%
- 30 6LF STORM SEW CL A 2 12 @ 0.35%
- 31 15LF STORM SEW CL A 2 12 @ 0.80%
- 32 6LF STORM SEW CL A 2 12 @ 0.35%
- 33 13LF STORM SEW CL A 2 12 @ 0.77%



FILE NAME = F:\396-064 Pingree Road\CADD\Sheets\1dot	USER NAME = dely	DESIGNED - BD	REVISED -
format\DI63519-sht-plnprf_7.dgn		DRAWN - DC	REVISED -
PLOT SCALE = 20.000' / IN.		CHECKED - BD	REVISED -
PLOT DATE = 8/26/2011		DATE - 08-29-2011	REVISED -

**STATE OF ILLINOIS
DEPARTMENT OF TRANSPORTATION**

**PINGREE ROAD RECONSTRUCTION
PLAN AND PROFILE - CONGRESS PARKWAY**

SCALE: VERT. 1"=5' HORIZ. 1"=20'

SHEET NO. 25 OF 92 SHEETS STA. 243+00 TO STA. 248+20

F.A.U. RTE. 126	SECTION 95-00090-01-FP	COUNTY McHENRY	TOTAL SHEETS 92	SHEET NO. 25
CONTRACT NO. 63519			ILLINOIS FED. AID PROJECT	