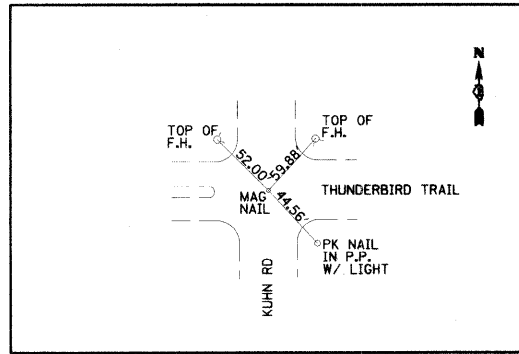
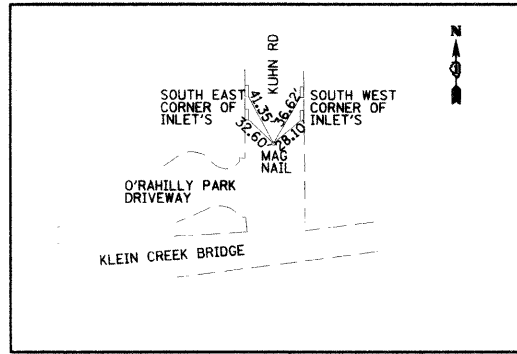




CONTROL POINT #5



CONTROL POINT #6

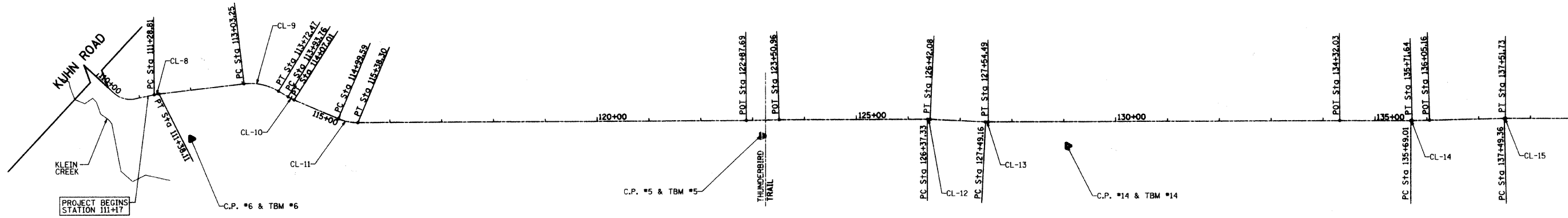


BENCHMARK SUMMARY

NAME	ELEVATION	STATION	DESCRIPTION
TBM #1	770.76	173+44, 26' RT	SET MAG NAIL @ KUHN ROAD AND DEERSKIN TRAIL
TBM #2	764.41	163+54, 33' RT	SET MAG NAIL @ KUHN ROAD AND CHESTNUT DRIVE
TBM #3	748.01	151+65, 29' RT	SET MAG NAIL @ KUHN ROAD AND MOHICAN RD./BIRCHBARK TR.
TBM #4	759.75	139+34, 28' RT	SET MAG NAIL @ KUHN ROAD AND MUNSON DRIVE
TBM #5	752.30	123+17, 30' RT	SET MAG NAIL @ KUHN ROAD AND THUNDERBIRD TRAIL
TBM #6	744.54	111+90, 93' RT	SET MAG NAIL @ KUHN ROAD N. OF O'RAHILLY PARK DRIVEWAY
TBM #14	759.54	129+08, 47' RT	SET 5/8" REBAR W/ YELLOW CAP E. SIDE OF KUHN RD. 6.5' FROM B/C 45' +/- N. OF PP @ HOUSE W/ POOL BETWEEN MUNSON & THUNDERBIRD TR
TBM #15	773.88	186+67, 35' RT	FOUND MAG NAIL @ KUHN ROAD AND LIES ROAD

CONTROL POINT SUMMARY

NAME	NORTHING	EASTING	DESCRIPTION
CP #1	1915953.83	1036824.49	SET MAG NAIL @ KUHN ROAD AND DEERSKIN TRAIL
CP #2	1914964.80	1036822.46	SET MAG NAIL @ KUHN ROAD AND CHESTNUT DRIVE
CP #3	1913775.65	1036822.43	SET MAG NAIL @ KUHN ROAD AND MOHICAN RD./BIRCHBARK TR.
CP #4	1912543.93	1036817.76	SET MAG NAIL @ KUHN ROAD AND MUNSON DRIVE
CP #5	1910929.28	1036820.38	SET MAG NAIL @ KUHN ROAD AND THUNDERBIRD TRAIL
CP #6	1909828.41	1036825.61	SET MAG NAIL @ KUHN ROAD N. OF O'RAHILLY PARK DRIVEWAY
CP #14	1911518.58	1036840.94	SET 5/8" REBAR W/ YELLOW CAP E. SIDE OF KUHN RD. 6.5' FROM B/C 45' +/- N. OF PP @ HOUSE W/ POOL BETWEEN MUNSON & THUNDERBIRD TR
CP #15	1917277.38	1036826.47	FOUND MAG NAIL @ KUHN ROAD AND LIES ROAD



MATCHLINE STATION 139+00
SEE SHEET NO. 6

COORDINATE INFORMATION

POINT ON ALIGNMENT	STA	NORTHING	EASTING
POT	111+16.80	1909745.12	1036742.96
PC #8	111+28.81	1909756.89	1036740.50
PT #8	111+38.11	1909766.06	1036739.01
PC #9	113+03.25	1909930.07	1036719.68
PT #9	113+72.47	1909996.51	1036734.01
PC #10	113+93.76	1910014.75	1036744.99
PT #10	114+07.01	1910026.54	1036751.02
PC #11	114+99.59	1910111.72	1036787.28
PT #11	115+38.30	1910149.41	1036794.87
POT	122+87.69	1910898.79	1036791.09
POT	123+50.96	1910962.04	1036789.52
PC #12	126+37.33	1911248.41	1036789.10
PT #12	126+42.08	1911253.16	1036789.21
PC #13	127+49.16	1911360.12	1036794.40
PT #13	127+54.49	1911365.44	1036794.52
POT	134+32.03	1912042.98	1036793.05
PC #14	135+69.01	1912179.96	1036793.21
PT #14	135+71.64	1912182.63	1036793.22
POT	136+05.16	1912216.09	1036792.38
PC #15	137+49.36	1912360.30	1036788.98
PT #15	137+51.73	1912362.67	1036788.96

PROP. CURVE CL-8
PI STA. = 111+33.46
Δ = 5° 04' 12" (RT)
D = 54° 34' 03"
R = 105.00'
T = 4.65'
L = 9.29'
E = 0.10'
θ = -----
T.R. = -----
S.E. RUN = -----
P.C. STA. = 111+28.81
P.T. STA. = 111+38.11

PROP. CURVE CL-9
PI STA. = 113+39.17
Δ = 37° 46' 15" (RT)
D = 54° 34' 03"
R = 105.00'
T = 35.92'
L = 69.22'
E = 5.97'
θ = -----
T.R. = -----
S.E. RUN = -----
P.C. STA. = 113+03.25
P.T. STA. = 113+72.47

PROP. CURVE CL-10
PI STA. = 114+00.40
Δ = 7° 59' 23" (LT)
D = 60° 18' 41"
R = 95.00'
T = 6.63'
L = 13.25'
E = 0.23'
θ = -----
T.R. = -----
S.E. RUN = -----
P.C. STA. = 113+93.76
P.T. STA. = 114+07.01

PROP. CURVE CL-11
PI STA. = 115+19.22
Δ = 23° 21' 06" (LT)
D = 60° 18' 41"
R = 95.00'
T = 19.63'
L = 38.72'
E = 2.01'
θ = -----
T.R. = -----
S.E. RUN = -----
P.C. STA. = 114+99.59
P.T. STA. = 115+38.30

PROP. CURVE CL-12
PI STA. = 126+39.71
Δ = 2° 51' 53" (RT)
D = 60° 18' 41"
R = 95.00'
T = 2.38'
L = 4.75'
E = 0.03'
θ = -----
T.R. = -----
S.E. RUN = -----
P.C. STA. = 126+37.33
P.T. STA. = 126+42.08

PROP. CURVE CL-13
PI STA. = 127+51.83
Δ = 2° 54' 15" (LT)
D = 54° 34' 03"
R = 105.00'
T = 2.66'
L = 5.32'
E = 0.01'
θ = -----
T.R. = -----
S.E. RUN = -----
P.C. STA. = 127+49.16
P.T. STA. = 127+54.49

PROP. CURVE CL-14
PI STA. = 135+70.32
Δ = 1° 25' 52" (LT)
D = 54° 34' 03"
R = 105.00'
T = 1.31'
L = 2.62'
E = 0.01'
θ = -----
T.R. = -----
S.E. RUN = -----
P.C. STA. = 135+69.01
P.T. STA. = 135+71.64

PROP. CURVE CL-15
PI STA. = 137+50.55
Δ = 1° 25' 51" (RT)
D = 60° 18' 41"
R = 95.00'
T = 1.19'
L = 2.37'
E = 0.01'
θ = -----
T.R. = -----
S.E. RUN = -----
P.C. STA. = 137+49.36
P.T. STA. = 137+51.73

