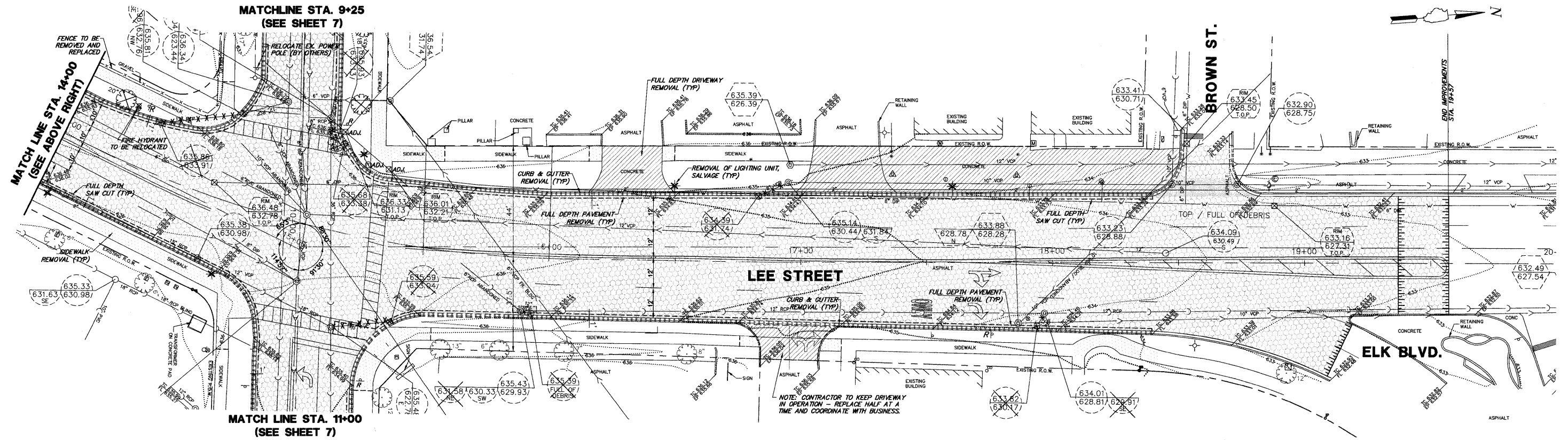


DEMOLITION LEGEND

FULL DEPTH PAVEMENT REMOVAL	
BITUMINOUS SURFACE REMOVAL, COLD MILLING, VARIABLE DEPTH	
CONCRETE SIDEWALK REMOVAL	
FULL DEPTH DRIVEWAY REMOVAL	
B6.24 CURB & GUTTER REMOVAL B6.12 CURB & GUTTER REMOVAL	
UTILITY PIPE REMOVAL	
UTILITY PIPE TO BE ABANDONED	
UTILITY REMOVAL, COMPLETE	
LIGHT POLE TO BE REMOVED AND SALVAGED	
FULL DEPTH SAW CUT	
TREE REMOVAL	
SIGN TO BE RELOCATED	
UTILITIES TO BE ADJUSTED	
BUTT JOINT	



FILE NAME = 3850-805-PR1.dwg

USER NAME = ZACH WALLSTEN
 PLOT SCALE = 1/101
 PLOT DATE = 8/23/2011

DESIGNED - CAD
 DRAWN - CAD
 CHECKED - BLS
 DATE - 8/23/2011

REVISED -
 REVISED -
 REVISED -
 REVISED -

**CITY OF DES PLAINES
 PROPOSED ROADWAY WIDENING AND
 TRAFFIC SIGNAL INSTALLATION**

EXISTING CONDITIONS & DEMOLITION PLAN
 SCALE: 1"=20'
 SHEET NO. OF SHEETS STA. TO STA.

F.A.P. RTE. 330	SECTION 10-00213-00-CH	COUNTY COOK	TOTAL SHEETS 47	SHEET NO. 7
CONTRACT # 63616				ILLINOIS FED. AID PROJECT

GHA #3850.805