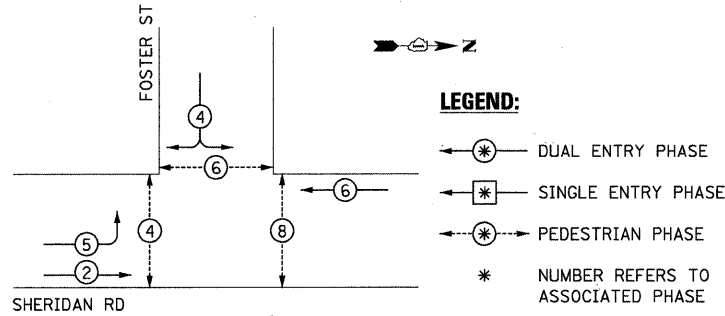
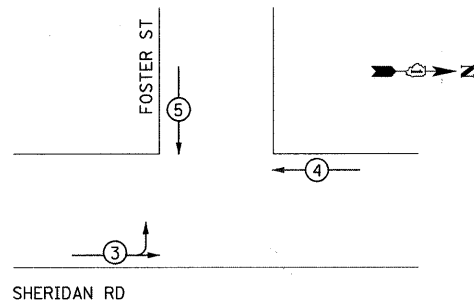


CONTROLLER SEQUENCE



PHASE DESIGNATION DIAGRAM

EMERGENCY VEHICLE PREEMPTION SEQUENCE



PROPOSED EMERGENCY VEHICLE PREEMPTORS			
EMERGENCY VEHICLE PREEMPTOR	3	4	5
MOVEMENT	↑	←	↓

INTERSECTION AND SAMPLING (SYSTEM) DETECTORS

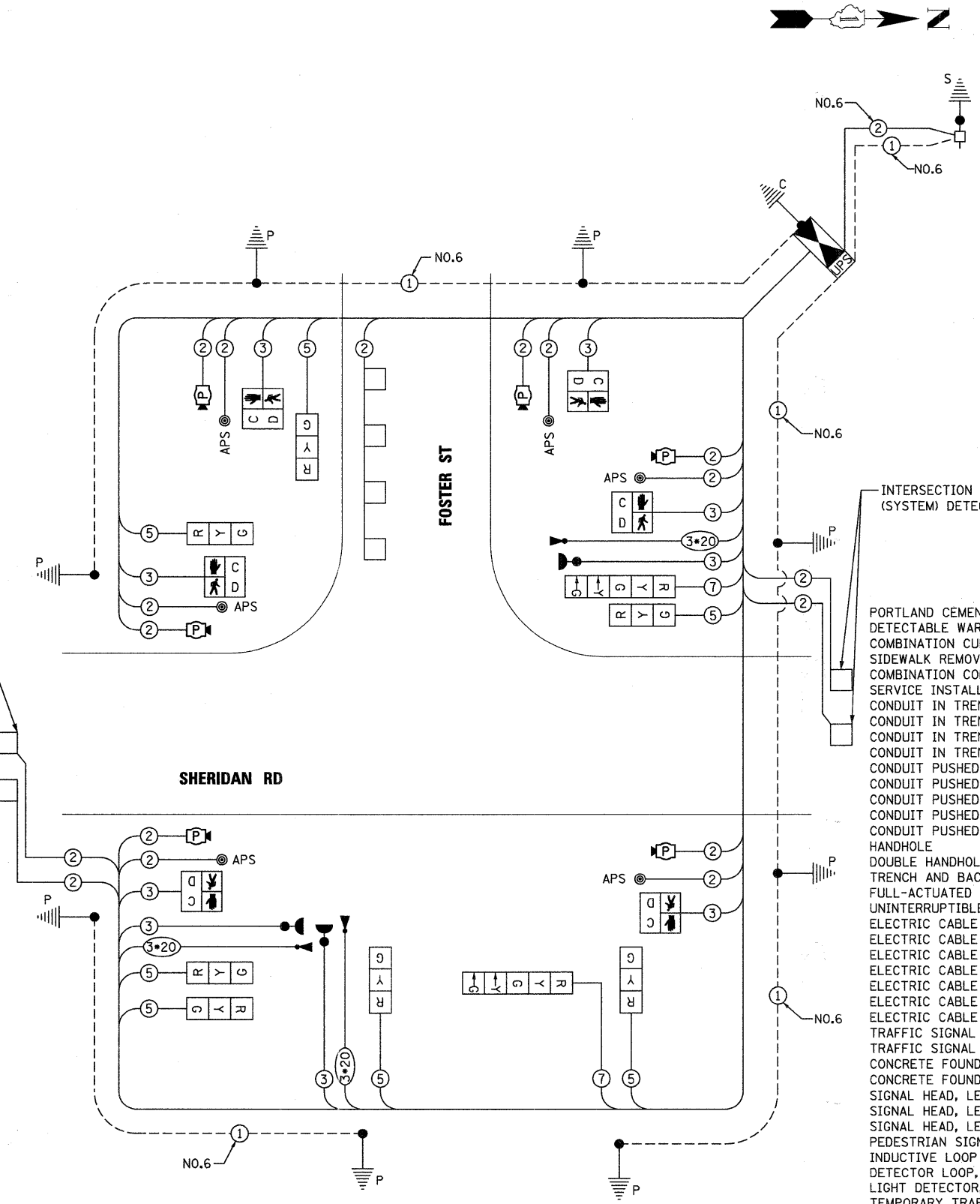
I.D.O.T. TRAFFIC SIGNAL INSTALLATION ELECTRICAL SERVICE REQUIREMENTS					TOTAL WATTAGE
TYPE	NO. OF LAMPS	WATTAGE INCAND.	LED% OPERATION		
SIGNAL (RED)	9	17	0.50	76.50	
(YELLOW)	9	25	0.25	56.25	
(GREEN)	9	15	0.25	33.75	
ARROW	4	12	0.10	4.80	
PED. SIGNAL	6	25	1.00	150.00	
CONTROLLER	1	100	1.00	100.00	
ILLUM. SIGN	-	25	0.05	-	
ENERGY COSTS TO:				TOTAL =	421.30

ILLINOIS DEPARTMENT OF TRANSPORTATION
 DIVISION OF HIGHWAY/DISTRICT 1
 201 WEST CENTER COURT/SCHAUMBURG, ILLINOIS 60196-1096
 ENERGY SUPPLY: CONTACT: LARRY SHANK
 PHONE: (847) 816-5465
 COMPANY: COMED

RESTORATION OF WORK AREA
 RESTORATION OF THE TRAFFIC SIGNAL WORK AREA SHALL BE INCIDENTAL TO THE RELATED PAY ITEM SUCH AS FOUNDATION, CONDUIT HANDHOLE, TRENCH AND BACKFILL, ETC., AND NO EXTRA COMPENSATION SHALL BE ALLOWED. ALL ROADWAY SURFACES SUCH AS SHOULDERS, MEDIANS, SIDEWALKS, PAVEMENT, ETC. SHALL BE REPLACED IN KIND, ALL DAMAGE TO MOWED LAWNS SHALL BE REPLACED WITH AN APPROVED SOD, AND ALL DAMAGE TO UNMOWED FIELDS SHALL BE SEEDED IN ACCORDANCE WITH STANDARD SPECIFICATIONS 252 AND 250 RESPECTIVELY.

NOTE:
 THE TRAFFIC SIGNAL CONTROLLER EQUIPMENT FOR THIS PROJECT SHALL BE "EAGLE" TO MATCH THE EXISTING ADJACENT SYSTEM.

THE END OF THE TRACER CABLE SHALL BE CONTINUOUS AND EXTEND INTO THE CONTROLLER CABINET.



CABLE PLAN

SCHEDULE OF QUANTITIES

ITEM	UNIT TOTAL
PORTLAND CEMENT CONCRETE SIDEWALK 5 INCH	SQ FT 398
DETECTABLE WARNINGS	SQ FT 76
COMBINATION CURB AND GUTTER REMOVAL	FOOT 58
SIDEWALK REMOVAL	SQ FT 358
COMBINATION CONCRETE CURB AND GUTTER, TYPE B-6.12	FOOT 58
SERVICE INSTALLATION - POLE MOUNTED	EACH 1
CONDUIT IN TRENCH, 2" DIA., GALVANIZED STEEL	FOOT 702
CONDUIT IN TRENCH, 2 1/2" DIA., GALVANIZED STEEL	FOOT 76
CONDUIT IN TRENCH, 3" DIA., GALVANIZED STEEL	FOOT 43
CONDUIT IN TRENCH, 5" DIA., GALVANIZED STEEL	FOOT 10
CONDUIT PUSHED, 2" DIA., GALVANIZED STEEL	FOOT 80
CONDUIT PUSHED, 2 1/2" DIA., GALVANIZED STEEL	FOOT 55
CONDUIT PUSHED, 3" DIA., GALVANIZED STEEL	FOOT 40
CONDUIT PUSHED, 4" DIA., GALVANIZED STEEL	FOOT 120
CONDUIT PUSHED, 5" DIA., GALVANIZED STEEL	FOOT 29
HANDHOLE	EACH 6
DOUBLE HANDHOLE	EACH 1
TRENCH AND BACKFILL FOR ELECTRICAL WORK	FOOT 914
FULL-ACTUATED CONTROLLER AND TYPE IV CABINET	EACH 1
UNINTERRUPTIBLE POWER SUPPLY	EACH 1
ELECTRIC CABLE IN CONDUIT, SIGNAL NO. 14 2C	FOOT 1,639
ELECTRIC CABLE IN CONDUIT, SIGNAL NO. 14 3C	FOOT 1,916
ELECTRIC CABLE IN CONDUIT, SIGNAL NO. 14 5C	FOOT 1,034
ELECTRIC CABLE IN CONDUIT, SIGNAL NO. 14 7C	FOOT 474
ELECTRIC CABLE IN CONDUIT, LEAD-IN, NO. 14 1 PAIR	FOOT 1,724
ELECTRIC CABLE IN CONDUIT, SERVICE, NO. 6 2 C	FOOT 222
ELECTRIC CABLE IN CONDUIT, EQUIPMENT GROUNDING CONDUCTOR, NO. 6 1C	FOOT 525
TRAFFIC SIGNAL POST, 16 FT.	EACH 1
TRAFFIC SIGNAL POST, 18 FT.	EACH 7
CONCRETE FOUNDATION, TYPE A	FOOT 32
CONCRETE FOUNDATION, TYPE C	FOOT 4
SIGNAL HEAD, LED, 1-FACE, 3-SECTION, BRACKET MOUNTED	EACH 3
SIGNAL HEAD, LED, 2-FACE, 3-SECTION, BRACKET MOUNTED	EACH 1
SIGNAL HEAD, LED, 2-FACE, 1-3 SECTION, 1-5 SECTION, BRACKET MOUNTED	EACH 2
PEDESTRIAN SIGNAL HEAD, LED, 1-FACE, BRACKET MOUNTED WITH COUNTDOWN TIMER	EACH 6
INDUCTIVE LOOP DETECTOR	EACH 5
DETECTOR LOOP, TYPE I	FOOT 276
LIGHT DETECTOR, SPECIAL	EACH 3
TEMPORARY TRAFFIC SIGNAL INSTALLATION	EACH 1
REMOVE EXISTING TRAFFIC SIGNAL EQUIPMENT	EACH 1
REMOVE EXISTING HANDHOLE	EACH 3
REMOVE EXISTING CONCRETE FOUNDATION	EACH 7
ELECTRIC CABLE IN CONDUIT NO. 20 3/C, TWISTED, SHIELDED	FOOT 499
MICROWAVE DETECTION UNIT	EACH 6
ACCESSIBLE PEDESTRIAN SIGNALS	EACH 6
VIBROTACTILE FEATURE	EACH 6
LIGHT DETECTOR AMPLIFIER	EACH 1

