

F.A.P. RTE.	SECTION	COUNTY	TOTAL SHEETS	SHEET NO.
0369	07-00232-04-WR	DUPAGE	198	1
		ILLINOIS	CONTRACT NO. 63632	

STATE OF ILLINOIS
DEPARTMENT OF TRANSPORTATION
DIVISION OF HIGHWAYS

PLANS FOR PROPOSED FEDERAL AID HIGHWAY

F.A.P. ROUTE 0369 (COUNTY HIGHWAY 33 75th ST.)
INTERSTATE 355 TO LYMAN AVENUE
WIDENING AND RECONSTRUCTION
SECTION 07-00232-04-WR
PROJECT M-9003 (568)
DUPAGE COUNTY

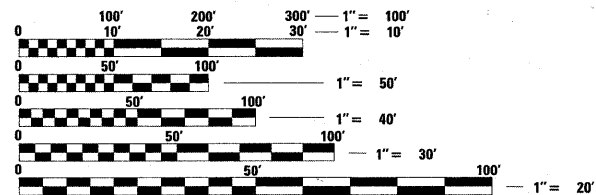
INDEX OF SHEETS

- 1 TITLE SHEET
- 2 GENERAL NOTES
- 3-11 SUMMARY OF QUANTITIES
- 11-13 TYPICAL SECTIONS
- 14-16 SCHEDULE OF QUANTITIES
- 17 ALIGNMENT, TIES & BENCHMARKS
- 18-26 PLAN AND PROFILE
- 27-63 MAINTENANCE OF TRAFFIC
- 64-79 EROSION CONTROL
- 80-93 DRAINAGE AND UTILITY PLAN
- 94 INTERSECTION DETAIL
- 95-99 PAVEMENT MARKING AND LANDSCAPING PLAN
- 100-134 TRAFFIC SIGNAL PLANS
- 135-137 COUNTY DETAILS
- 138-149 DISTRICT DETAILS
- 150-198 CROSS SECTIONS

DESIGN DESIGNATION

75th STREET - OTHER PRINCIPAL ARTERIAL
DESIGN SPEED: 75th STREET = 45 MPH (45 MPH POSTED)
LEMONT ROAD = 40 MPH (40 MPH POSTED)
DUNHAM ROAD = 30 MPH (25 MPH POSTED)
2020 ADT: 75th STREET 45,821 (WEST LEG), 41,153 (EAST LEG)
LEMONT ROAD 35,199 (NORTH LEG), 34,533 (SOUTH LEG)
2030 ADT: DUNHAM ROAD 8,480 (NORTH LEG), 6,806 (SOUTH LEG)

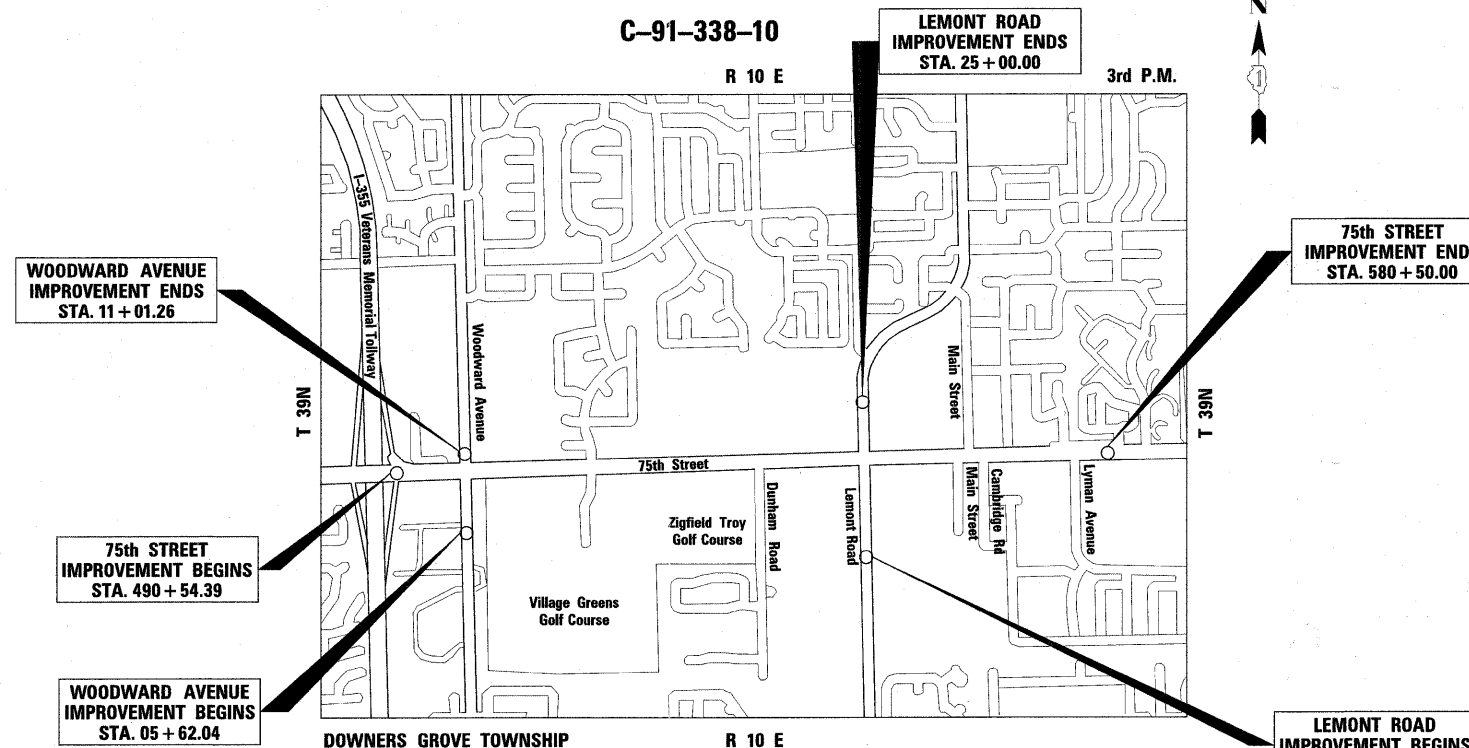
PROJECT LOCATED IN DUPAGE COUNTY, UNINCORPORATED DUPAGE COUNTY, VILLAGE OF WOODRIDGE, VILLAGE OF DOWNERS GROVE AND THE CITY OF DARIEN



FULL SIZE PLANS HAVE BEEN PREPARED USING STANDARD ENGINEERING SCALES. REDUCED SIZED PLANS WILL NOT CONFORM TO STANDARD SCALES. IN MAKING MEASUREMENTS ON REDUCED PLANS, THE ABOVE SCALES MAY BE USED.

J.U.L.I.E.
JOINT UTILITY LOCATION INFORMATION FOR EXCAVATION
1-800-892-0123
OR 811

CONTRACT NO. 63632



LOCATION MAP

GROSS LENGTH OF 75th ST. = 8995.61 FT. = 1.704 MILES
NET LENGTH OD 75th ST. = 8995.61 FT. = 1.704 MILES
GROSS LENGTH OF WOODWARD AVE. = 539.22 FT = 0.102 MILES
NET LENGTH OF WOODWARD AVE. = 539.22 FT = 0.102 MILES
GROSS LENGTH OF LEMONT ROAD = 1646.75 FT = 0.312 MILES
NET LENGTH OF LEMONT ROAD = 1646.75 FT = 0.312 MILES
GROSS AND NET LENGTH OF PROJECT = 11181.58 FT = 2.118 MILES



Craig A. Lukowicz
CRAIG A. LUKOWICZ
ILLINOIS REGISTERED PROFESSIONAL ENGINEER NO. 062-041788
MY LICENSE EXPIRES ON 11-30-11.



LOCATION OF SECTION INDICATED THUS: - [Black Box] -

STATE OF ILLINOIS
DEPARTMENT OF TRANSPORTATION
DIVISION OF HIGHWAYS

APPROVED September 6 2011
Charles F. Pokanski
DUPAGE COUNTY ENGINEER

PASSED September 9 2011
Chad A. ...
DISTRICT ONE ENGINEER OF LOCAL ROADS & STREETS

RELEASING FOR BID
BASED ON LIMITED
REVIEW September 13 2011
Diana M. O'Keefe
DEPUTY DIRECTOR OF HIGHWAYS, REGION ONE ENGINEER

**PRINTED BY THE AUTHORITY
OF THE STATE OF ILLINOIS**

PROGRAM AND OFFICE ENGINEER: CHARLES F. RIDDLE, P.E. - (847)-705-4406 SCHAUMBURG, IL

BL Bollinger, Lach & Associates, Inc.
333 PIERCE ROAD SUITE 200 ITASCA, IL 60143
P(630) 438 6400 F(630) 438 6444 www.bollingerlach.com
ITASCA • CHICAGO • ALGONQUIN • LAKE GENEVA • SOUTH BEND • INDIANAPOLIS