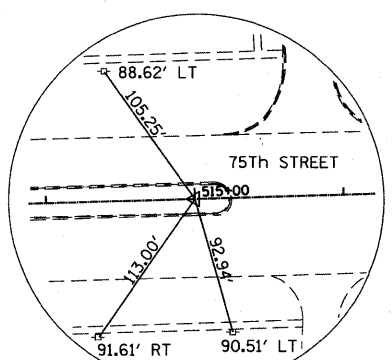
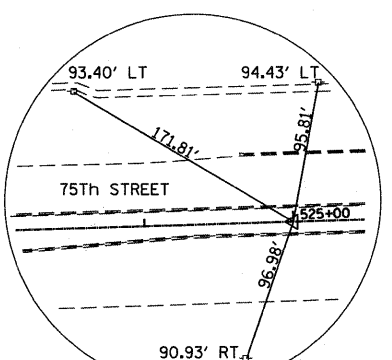


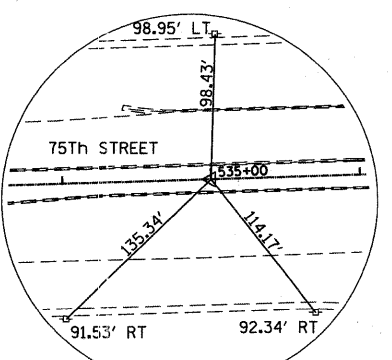
CONTROL POINT NUMBER 1100
SET "MAG" NAIL IN PAVEMENT
STA.506+00.00
N.1851930.666
E.1067390.456



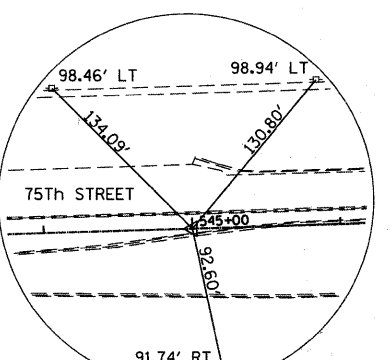
CONTROL POINT NUMBER 1101
SET "IP" IRON PIPE
STA.515+00.00
N.1851956.279
E.1068230.066



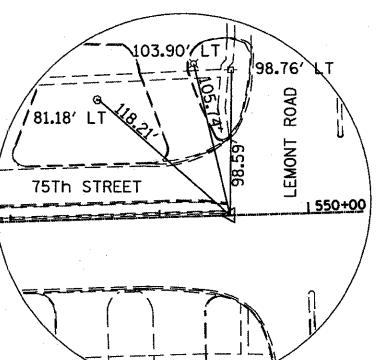
CONTROL POINT NUMBER 1102
SET "IP" IRON PIPE
STA.525+00.00
N.1851986.771
E.1069229.601



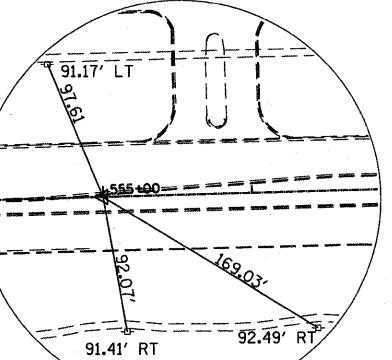
CONTROL POINT NUMBER 1103
SET "IP" IRON PIPE
STA.535+00.00
N.1852017.262
E.1070229.136



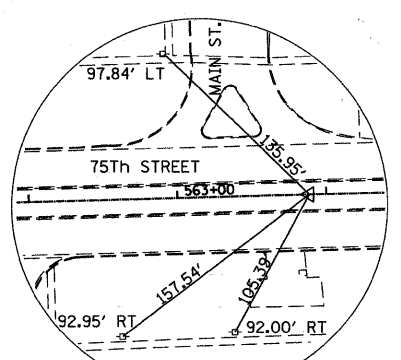
CONTROL POINT NUMBER 1105
SET "IP" IRON PIPE
STA.545+00.00
N.1852047.754
E.1071228.671



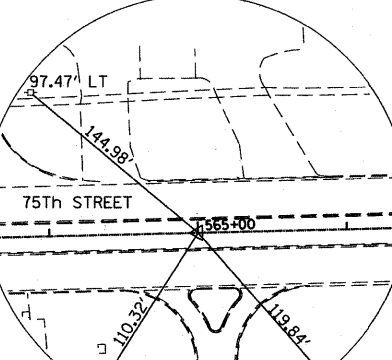
CONTROL POINT NUMBER 211
SET CROSS "X" CUT
STA.549+47.37
N.1852061.395
E.1071675.833



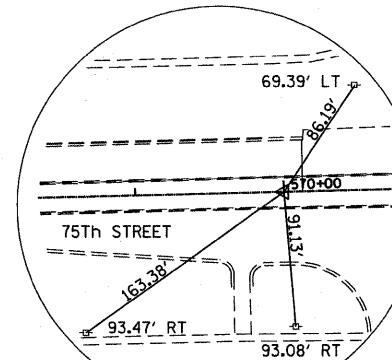
CONTROL POINT NUMBER 107
SET "IP" IRON PIPE
STA.555+00.00
N.1852076.537
E.1072228.255



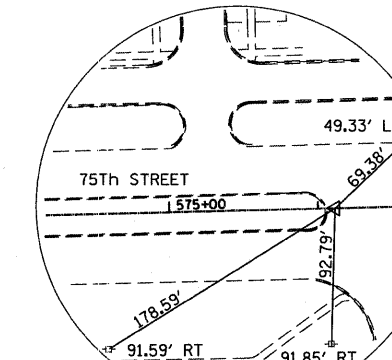
CONTROL POINT NUMBER 1108
SET "IP" IRON PIPE
STA.563+88.61
N.1852100.886
E.1073116.531



CONTROL POINT NUMBER 1109
SET "IP" IRON PIPE
STA.565+00.00
N.1852103.648
E.1073227.887



CONTROL POINT NUMBER 1111
SET "IP" IRON PIPE
STA.570+00.00
N.1852116.048
E.1073727.733



CONTROL POINT NUMBER 1110
SET "MAG" NAIL IN PAVEMENT
STA.576+11.40
N.1852131.209
E.1074338.945

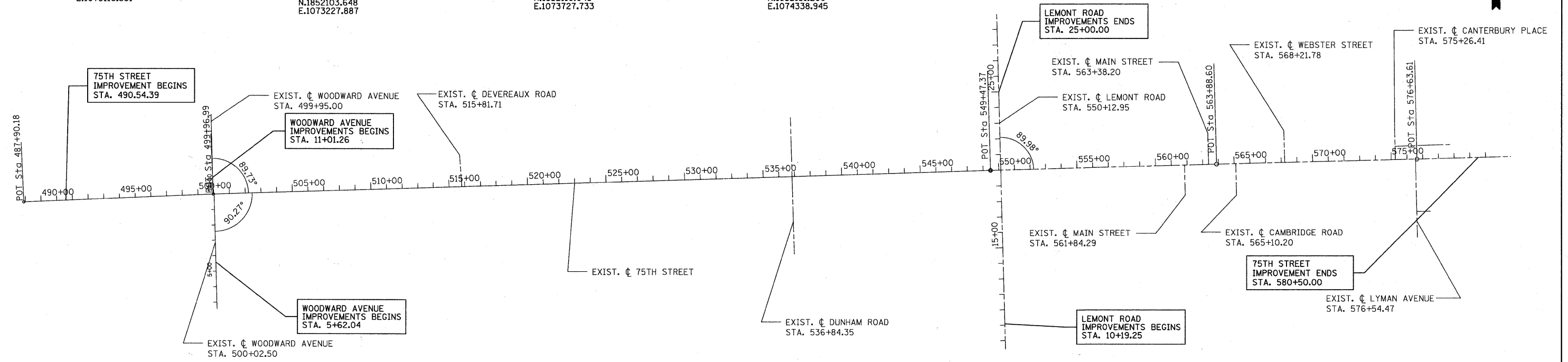
COUNTY BENCHMARKS

DUPAGE COUNTY BM No. DNG 28003 STANDARD DUPAGE COUNTY, MAPS & PLATS BRONZE DISK SET ON TRAFFIC LIGHT CONCRETE BASE AT THE SOUTHEAST CORNER OF 75TH ST. & FAIRVIEW AVE. ELEV: 779.99 (NGVD 29)

DUPAGE COUNTY BM No. DGN 28001 A BRONZE DISK WITH NO IDENTIFICATION SET BY THE DUPAGE COUNTY DEPT. OF MAPS & PLATS. SET VERTICALLY IN THE SOUTH FACE OF BRICK WALL OF "LACE SCHOOL BUILDING" NEAR THE NORTHWEST INTERSECTION OF CASS AVE. & 75TH ST. MONUMENT IS SET 2.85 FT. ABOVE PAVEMENT. ELEV: 759.528 (NGVD 29)

TEMPORARY BENCHMARKS

NAME	DESCRIPTION	NORTHING	EASTING	APPRX. STA.	OFF.	ELEV.
TBM1	NE HDBOLT ON HYD	1852036.114	1068358.287	516+30	LT	783.51
TBM2	NE HDBOLT ON HYD	1852076.048	1069368.326	526+41	LT	779.79
TBM3	NE HDBOLT ON HYD	1852108.605	1070449.329	537+23	LT	770.88
TBM4	NE HDBOLT ON HYD	1852103.332	1071460.787	547+34	LT	777.06
TBM5	NE HDBOLT ON HYD	1852181.421	1072808.444	560+83	LT	767.16
TBM6	" " ON HYDRANT FLANGE	1852058.422	1073724.155	569+95	RT	772.86
TBM7	" " ON HYDRANT FLANGE	1852028.532	1074356.645	576+27	RT	776.76



FILE NAME = F:\451-030_75th St. Dupage_DOT\ENGINEERING\DRAWINGS\451-030-ah-ATB.dgn



USER NAME = gellwanger
PLOT SCALE = 317.6471' / IN.
PLOT DATE = 9/7/2011

DESIGNED - GJE
DRAWN - DC
CHECKED - JP
DATE - 9/08/11

REVISED -
REVISED -
REVISED -
REVISED -

**STATE OF ILLINOIS
DEPARTMENT OF TRANSPORTATION**

**HORIZONTAL ALIGNMENT, TIES AND BENCHMARKS
75TH STREET**

SCALE: NONE SHEET NO. 17 OF 198 SHEETS STA. TO STA.

F.A.P. RTE.	SECTION	COUNTY	TOTAL SHEETS	SHEET NO.
0369	07-00232-04-WR	DUPAGE	198	17

CONTRACT NO. 63632
ILLINOIS FED. AID PROJECT