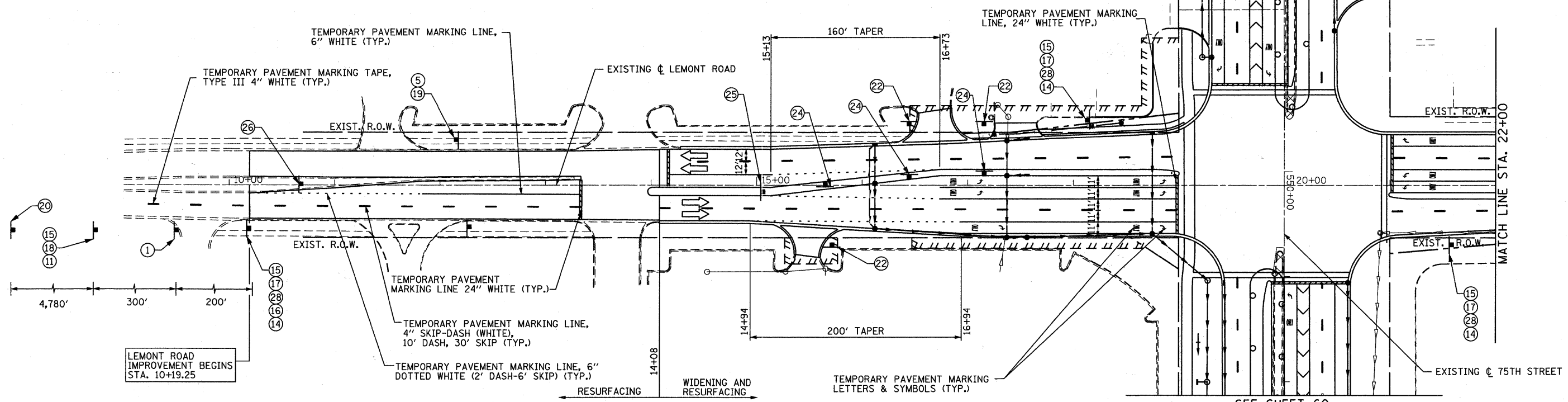
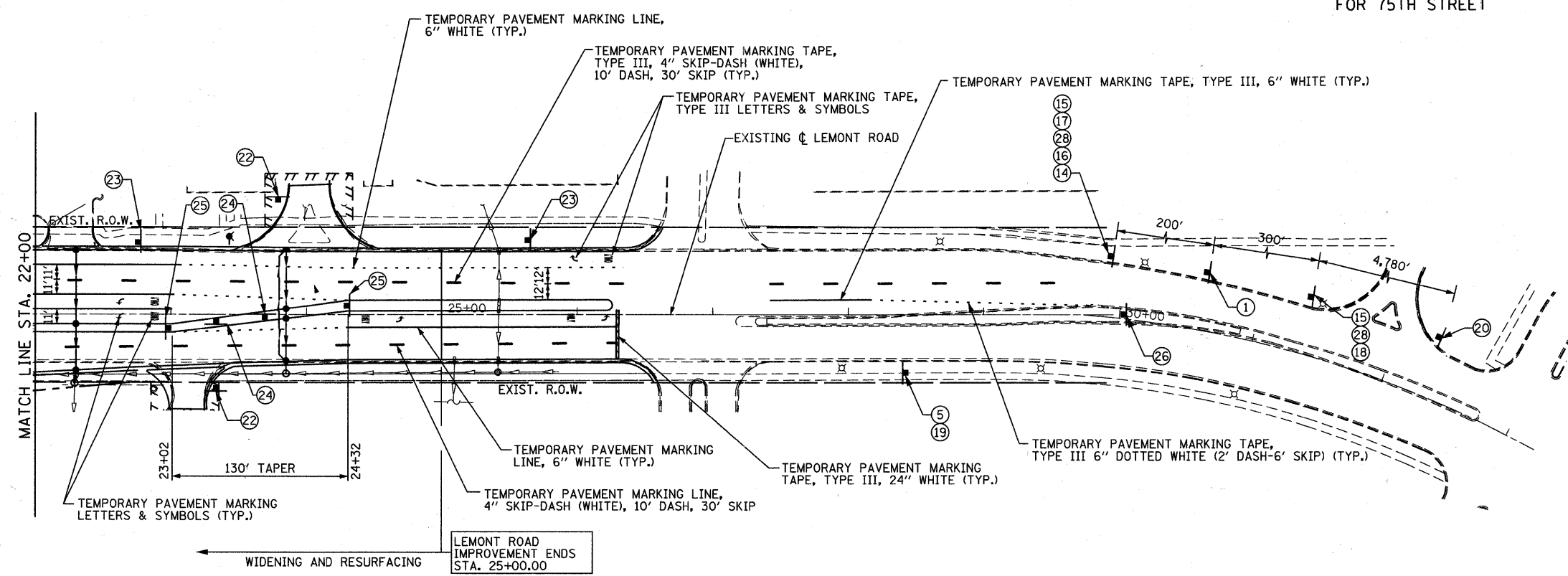


SEE SHEET 60 FOR 75TH STREET



SEE SHEET 60 FOR 75TH STREET



FILE NAME = F:\V51-030-75th st dupage det\engineering\drawings\51-030-ah-tr-staging3.5.dgn

NOTE: PAVEMENT MARKING TAPE, TYPE III MUST BE USED ON THE PAVEMENT OUTSIDE OF THE PROJECT LIMITS IN ALL STAGES. FOR STAGE III, USE PAVEMENT MARKING TAPE, TYPE III ON THE NEW HMA SURFACE PROIR TO THERMOPLASTIC PAVEMENT MARKINGS.

<p>Bollinger, Lach & Associates, Inc. ITASCA, ILLINOIS</p>	USER NAME = gellwanger	DESIGNED - GJE	REVISED -	STATE OF ILLINOIS DEPARTMENT OF TRANSPORTATION	MAINTENANCE OF TRAFFIC STAGE 3			F.A.P. RTE. 0369	SECTION 07-00232-04-WR	COUNTY DUPAGE	TOTAL SHEETS 198	SHEET NO. 62
	PLOT SCALE = 50.0000' / IN.	CHECKED - JP	REVISED -		SCALE: 1"=50'	SHEET NO. 62 OF 198 SHEETS	STA.	TO STA.	CONTRACT NO. 63632			
	PLOT DATE = 9/7/2011	DATE = 9/08/11	REVISED -		ILLINOIS FED. AID PROJECT							