
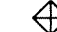
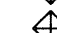
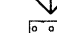
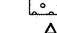
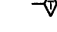
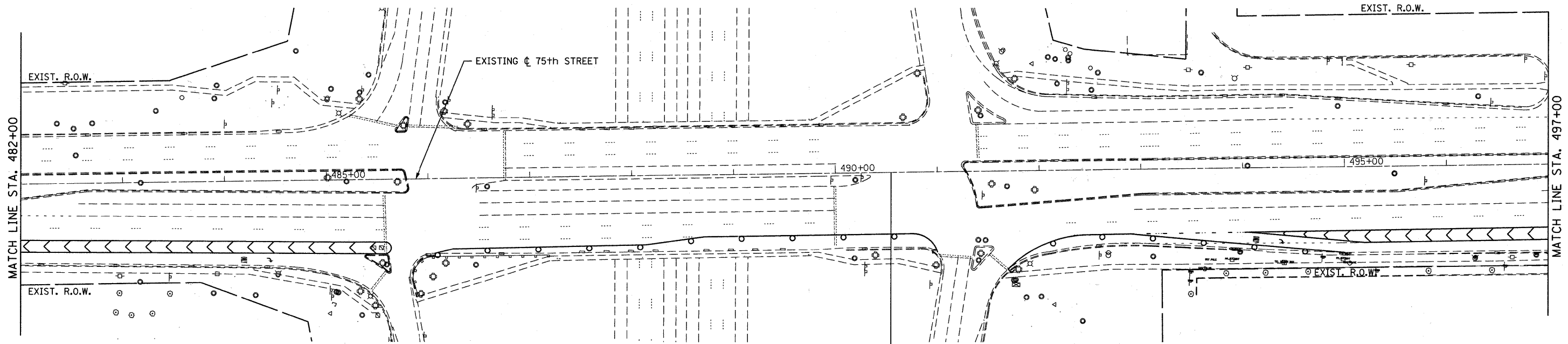
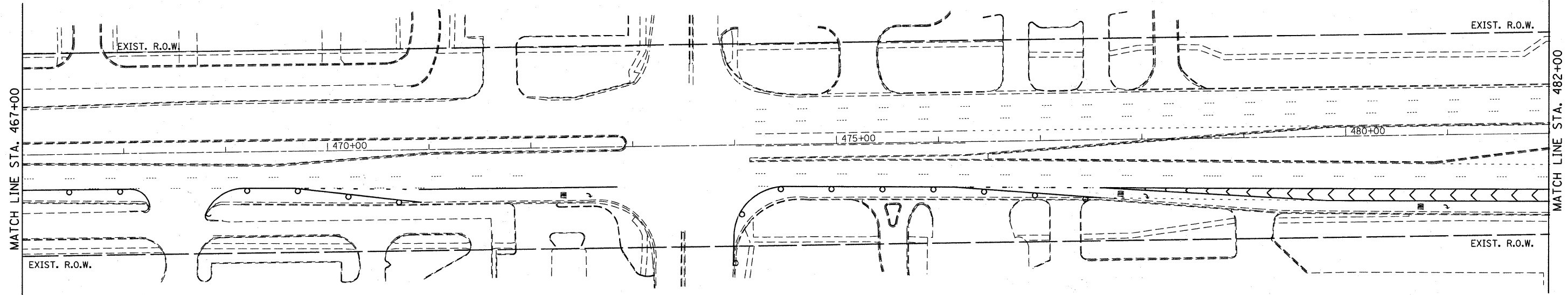
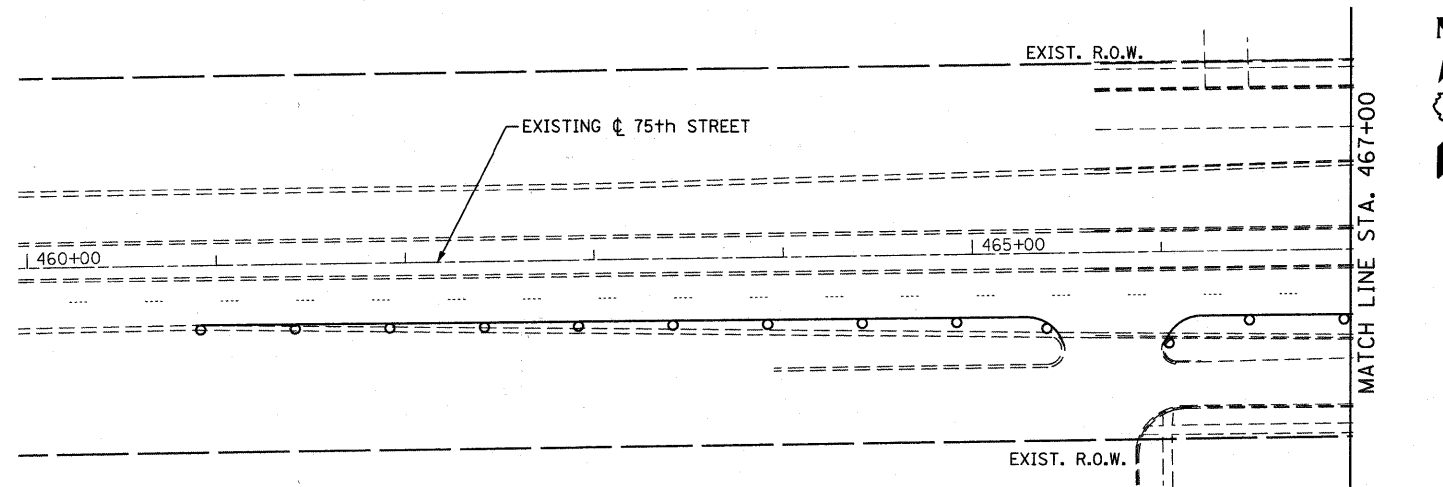


LEGEND

-  DITCH FLOW
-  INLET FILTERS
-  INLET AND PIPE PROTECTION (SEE NOTE)
-  TEMPORARY EROSION CONTROL SEEDING
-  TEMPORARY DITCH CHECK
-  PERIMETER EROSION BARRIER

NOTE: INLET AND PIPE PROTECTION SHALL BE PROVIDED AT ALL CULVERT AND FLARED END SECTION INFLOW AND OUTFALLS.



75TH STREET IMPROVEMENT BEGINS STA. 490+54.39
ROADWAY RESURFACING

FILE NAME = F:\451-030 75th st duppage dot engineering\drwings\451-030-ah-eros1.dgn

B Bollinger, Lach & Associates, Inc.
ITASCA, ILLINOIS

USER NAME = gellwanger	DESIGNED - GJE	REVISED -
PLOT SCALE = 50,0000' / IN.	DRAWN - DC	REVISED -
PLOT DATE = 9/7/2011	CHECKED - JP	REVISED -
	DATE - 9/08/11	REVISED -

**STATE OF ILLINOIS
DEPARTMENT OF TRANSPORTATION**

**EROSION AND SEDIMENT CONTROL
STAGE 1**

SCALE: 1"=50' SHEET NO. 64 OF 198 SHEETS STA. 482+00 TO STA. 497+00

F.A.P. RTE. 0369	SECTION 07-00232-04-WR	COUNTY DuPAGE	TOTAL SHEETS 198	SHEET NO. 64
CONTRACT NO. 63632			ILLINOIS FED. AID PROJECT	