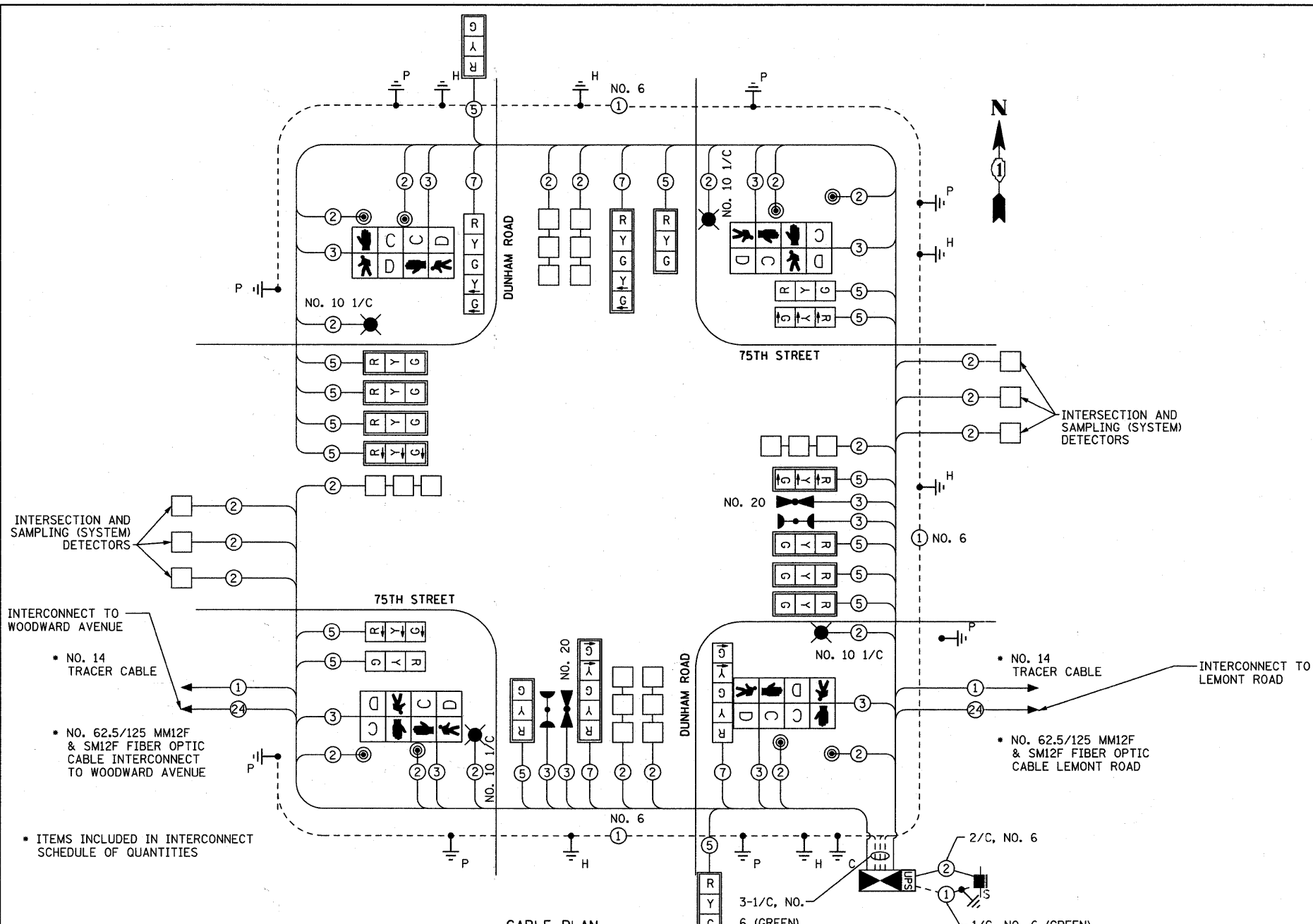


SCHEDULE OF QUANTITIES

ITEM	UNIT	QTY
SIGN PANEL - TYPE 1	SQ FT	30
SERVICE INSTALLATION - POLE MOUNTED	EACH	1
CONDUIT IN TRENCH, 2" DIA., GALVANIZED STEEL	FOOT	610
CONDUIT IN TRENCH, 2 1/2" DIA., GALVANIZED STEEL	FOOT	37
CONDUIT IN TRENCH, 3" DIA., GALVANIZED STEEL	FOOT	107
CONDUIT IN TRENCH, 4" DIA., GALVANIZED STEEL	FOOT	144
CONDUIT PUSHED, 2" DIA., GALVANIZED STEEL	FOOT	224
CONDUIT PUSHED, 4" DIA., GALVANIZED STEEL	FOOT	288
HANDHOLE	EACH	5
DOUBLE HANDHOLE	EACH	2
ELECTRIC CABLE IN CONDUIT, 600V (EPR-TYPE RHW) 1/C NO. 10	FOOT	2,208
TRENCH AND BACKFILL FOR ELECTRICAL WORK	FOOT	898
LUMINAIRE, SODIUM VAPOR, HORIZONTAL MOUNT, 400 WATT	EACH	4
FULL-ACTUATED CONTROLLER AND TYPE IV CABINET	EACH	1
UNINTERRUPTIBLE POWER SUPPLY	EACH	1
TRANSCEIVER - FIBER OPTIC	EACH	1
ELECTRIC CABLE IN CONDUIT, SIGNAL NO. 14 2C	FOOT	1,527
ELECTRIC CABLE IN CONDUIT, SIGNAL NO. 14 3C	FOOT	1,879
ELECTRIC CABLE IN CONDUIT, SIGNAL NO. 14 5C	FOOT	3641
ELECTRIC CABLE IN CONDUIT, SIGNAL NO. 14 7C	FOOT	861
ELECTRIC CABLE IN CONDUIT, LEAD-IN, NO. 14 1 PAIR	FOOT	5,739
ELECTRIC CABLE IN CONDUIT, SERVICE, NO. 6 2 C	FOOT	28
TRAFFIC SIGNAL POST, 14 FT.	EACH	2
TRAFFIC SIGNAL POST, 16 FT.	EACH	2
STEEL COMBINATION MAST ARM ASSEMBLY AND POLE 42 FT.	EACH	2
STEEL COMBINATION MAST ARM ASSEMBLY AND POLE 62 FT.	EACH	1
STEEL COMBINATION MAST ARM ASSEMBLY AND POLE 66 FT.	EACH	1
CONCRETE FOUNDATION, TYPE A	FOOT	16
CONCRETE FOUNDATION, TYPE C	FOOT	4
CONCRETE FOUNDATION, TYPE E 30-INCH DIAMETER	FOOT	30
CONCRETE FOUNDATION, TYPE E 42-INCH DIAMETER	FOOT	46
SIGNAL HEAD, LED, 1-FACE, 3-SECTION, MAST-ARM MOUNTED	EACH	10
SIGNAL HEAD, LED, 1-FACE, 3-SECTION, BRACKET MOUNTED	EACH	6
SIGNAL HEAD, LED, 1-FACE, 5-SECTION, BRACKET MOUNTED	EACH	2
SIGNAL HEAD, LED, 1-FACE, 5-SECTION, MAST-ARM MOUNTED	EACH	2
PEDESTRIAN SIGNAL HEAD, LED, 1-FACE, BRACKET MOUNTED WITH COUNTDOWN TIMER	EACH	6
PEDESTRIAN SIGNAL HEAD, LED, 2-FACE, BRACKET MOUNTED WITH COUNTDOWN TIMER	EACH	1
TRAFFIC SIGNAL BACKPLATE, LOUVERED, ALUMINUM	EACH	12
DETECTOR LOOP, TYPE I	FOOT	1083
LIGHT DETECTOR	EACH	4
LIGHT DETECTOR AMPLIFIER	EACH	1
PEDESTRIAN PUSH-BUTTON	EACH	8
TEMPORARY TRAFFIC SIGNAL INSTALLATION	EACH	1
REMOVE EXISTING TRAFFIC SIGNAL EQUIPMENT	EACH	1
REMOVE EXISTING HANDHOLE	EACH	9
REMOVE EXISTING CONCRETE FOUNDATION	EACH	11
ELECTRIC CABLE IN CONDUIT NO. 20 3/C, TWISTED, SHIELDED	FOOT	352
RE-OPTIMIZE TRAFFIC SIGNAL SYSTEM LEVEL 2	EACH	1
TEMPORARY TRAFFIC SIGNAL TIMING	EACH	1

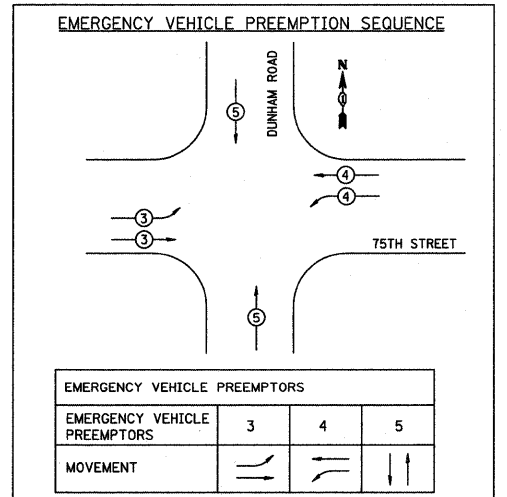
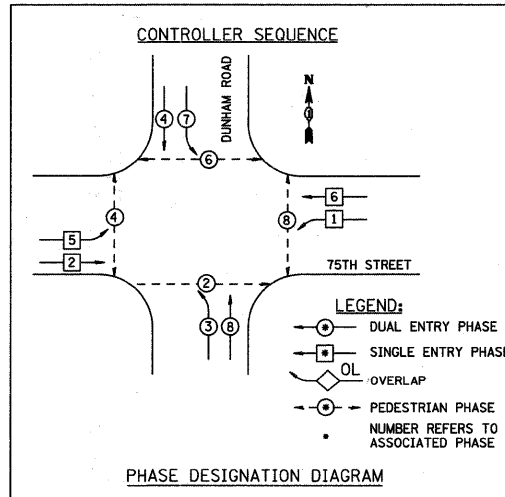


CABLE PLAN
NOT TO SCALE

THE END OF THE TRACER CABLE SHALL BE CONTINUOUS AND EXTEND INTO THE CONTROLLER CABINET

THE TRAFFIC SIGNAL CONTROL EQUIPMENT FOR THIS PROJECT SHALL BE "ECONOLITE" TO MATCH THE EXISTING ADJACENT SYSTEM.

RESTORATION OF WORK AREA, RESTORATION OF THE TRAFFIC SIGNAL WORK AREA SHALL BE INCIDENTAL TO THE RELATED PAY ITEM SUCH AS FOUNDATION, CONDUIT, HANDHOLE, TRENCH AND BACKFILL, ETC., AND NO EXTRA COMPENSATION SHALL BE ALLOWED. ALL ROADWAY SURFACES SUCH AS SHOULDERS, MEDIANS, SIDEWALKS, PAVEMENT, ETC. SHALL BE REPLACED IN KIND. ALL DAMAGE TO MOWED LAWNS SHALL BE REPLACED WITH AN APPROVED SOD, AND ALL DAMAGE TO UNMOWED FIELDS SHALL BE SEEDED IN ACCORDANCE WITH STANDARD SPECIFICATIONS 252 AND 250 RESPECTIVELY.



DPCDOT TRAFFIC SIGNAL INSTALLATION ELECTRICAL SERVICE REQUIREMENTS					TOTAL WATTAGE
TYPE	NO. LAMPS	WATTAGE INCAND	LED	% OPERATION	
SIGNAL (RED)	16		10	60	96
(YELLOW)	16		22	3	10.56
(GREEN)	16		12	37	71.04
SIGNAL (RED ARROW)	4		10	85	34
(YELLOW ARROW)	8		22	2	3.52
(GREEN ARROW)	8		12	13	14.4
PED. SIGNAL (HAND)	8		10	5	4
(PERSON)	8		22	95	167.2
CONTROLLER	1		100	100	100
LUMINAIRE	4	310		100	1240
VIDEO SYSTEM	1	150		50	150
TOTAL =					1890.72

ENERGY COST TO: DuPage County Division of Transportation
421 N. County Farm Road
Wheaton, IL 60187-2553

ENERGY SUPPLY: CONTACT: DAVE BALLINGER
PHONE: 847-724-5717
COMPANY: ComEd

Bollinger, Lach & Associates, Inc.
ITASCA, ILLINOIS

USER NAME = gellwanger
DESIGNED - GJE
DRAWN - DC
CHECKED - JP
DATE - 9/08/11

REVISED -
REVISED -
REVISED -
REVISED -

STATE OF ILLINOIS
DEPARTMENT OF TRANSPORTATION

TRAFFIC SIGNAL INSTALLATION PLAN
75TH STREET @ DUNHAM ROAD

F.A.P. RTE.	SECTION	COUNTY	TOTAL SHEETS	SHEET NO.
0369	07-00232-04-WR	DuPAGE	198	112

CONTRACT NO. 63632