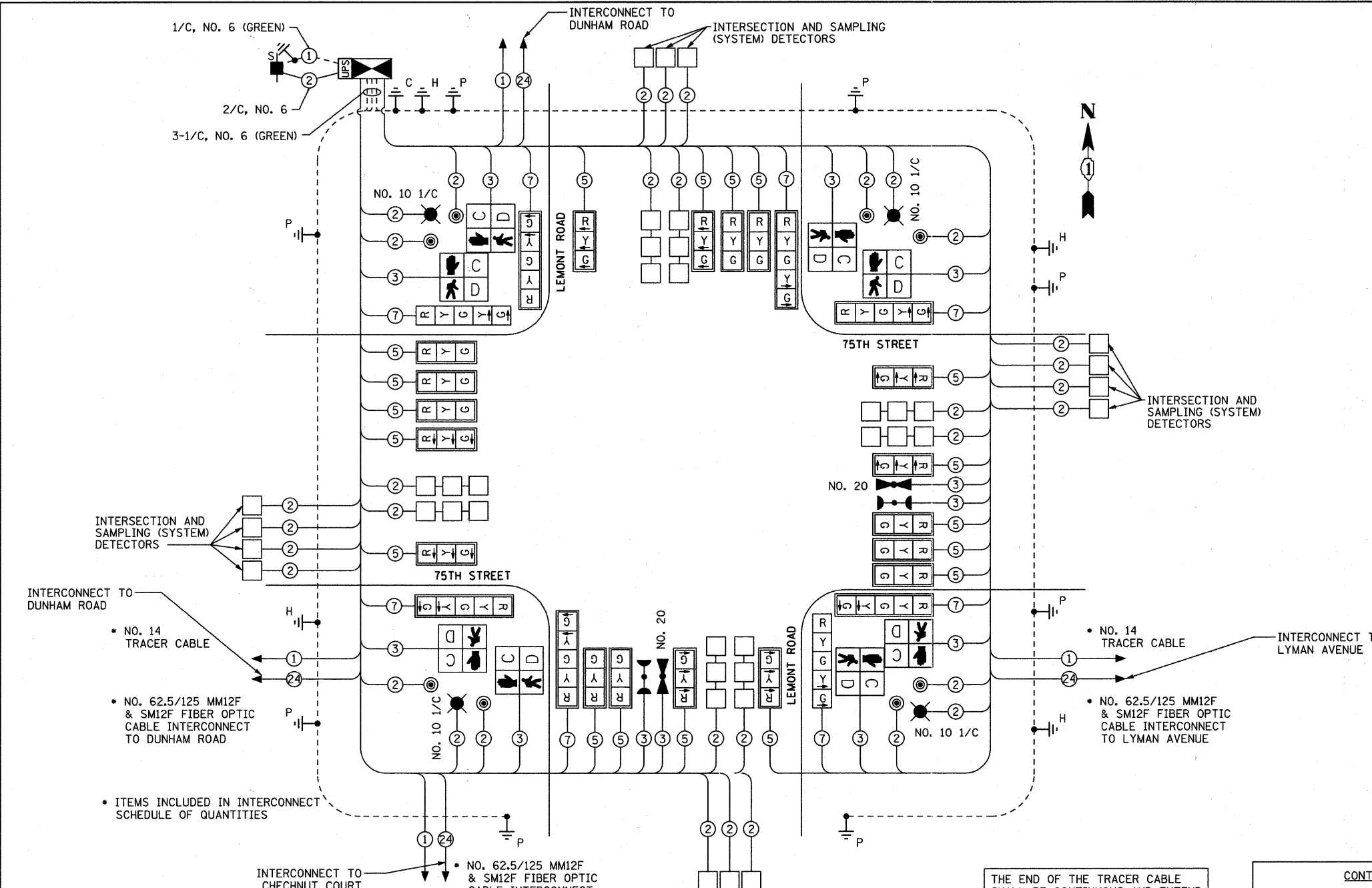


SCHEDULE OF QUANTITIES

| ITEM | UNIT | QTY |
|---|-------|--------|
| SIGN PANEL - TYPE 1 | SQ FT | 60 |
| SERVICE INSTALLATION - POLE MOUNTED | EACH | 1 |
| CONDUIT IN TRENCH, 2" DIA., GALVANIZED STEEL | FOOT | 1,181 |
| CONDUIT IN TRENCH, 3" DIA., GALVANIZED STEEL | FOOT | 192 |
| CONDUIT IN TRENCH, 4" DIA., GALVANIZED STEEL | FOOT | 180 |
| CONDUIT PUSHED, 2" DIA., GALVANIZED STEEL | FOOT | 246 |
| CONDUIT PUSHED, 4" DIA., GALVANIZED STEEL | FOOT | 719 |
| HANDHOLE | EACH | 13 |
| DOUBLE HANDHOLE | EACH | 2 |
| ELECTRIC CABLE IN CONDUIT, 600V (EPR-TYPE RHW) 1/C NO. 10 | FOOT | 2,510 |
| TRENCH AND BACKFILL FOR ELECTRICAL WORK | FOOT | 1,553 |
| LUMINAIRE, SODIUM VAPOR, HORIZONTAL MOUNT, 400 WATT | EACH | 4 |
| FULL-ACTUATED CONTROLLER IN TYPE V CABINET | EACH | 1 |
| MASTER CONTROLLER | EACH | 1 |
| UNINTERRUPTIBLE POWER SUPPLY | EACH | 1 |
| TRANSCIVER - FIBER OPTIC | EACH | 1 |
| ELECTRIC CABLE IN CONDUIT, SIGNAL NO. 14 2C | FOOT | 1,936 |
| ELECTRIC CABLE IN CONDUIT, SIGNAL NO. 14 3C | FOOT | 2,756 |
| ELECTRIC CABLE IN CONDUIT, SIGNAL NO. 14 5C | FOOT | 5,101 |
| ELECTRIC CABLE IN CONDUIT, SIGNAL NO. 14 7C | FOOT | 2,137 |
| ELECTRIC CABLE IN CONDUIT, LEAD-IN, NO. 14 1 PAIR | FOOT | 11,294 |
| ELECTRIC CABLE IN CONDUIT, SERVICE, NO. 6 2 C | FOOT | 28 |
| STEEL MAST ARM ASSEMBLY AND POLE 24 FT. | EACH | 2 |
| STEEL MAST ARM ASSEMBLY AND POLE 26 FT. | EACH | 1 |
| STEEL MAST ARM ASSEMBLY AND POLE 28 FT. | EACH | 1 |
| STEEL COMBINATION MAST ARM ASSEMBLY AND POLE 50 FT. | EACH | 2 |
| STEEL COMBINATION MAST ARM ASSEMBLY AND POLE 54 FT. | EACH | 2 |
| CONCRETE FOUNDATION, TYPE C | FOOT | 4 |
| CONCRETE FOUNDATION, TYPE E 30-INCH DIAMETER | FOOT | 40 |
| CONCRETE FOUNDATION, TYPE E 36-INCH DIAMETER | FOOT | 60 |
| SIGNAL HEAD, LED, 1-FACE, 3-SECTION, MAST-ARM MOUNTED | EACH | 18 |
| SIGNAL HEAD, LED, 1-FACE, 5-SECTION, BRACKET MOUNTED | EACH | 6 |
| SIGNAL HEAD, LED, 1-FACE, 5-SECTION, MAST-ARM MOUNTED | EACH | 2 |
| PEDESTRIAN SIGNAL HEAD, LED, 1-FACE, BRACKET MOUNTED WITH COUNTDOWN TIMER | EACH | 8 |
| TRAFFIC SIGNAL BACKPLATE, LOUVERED, ALUMINUM | EACH | 20 |
| DETECTOR LOOP, TYPE I | FOOT | 1,386 |
| LIGHT DETECTOR | EACH | 4 |
| LIGHT DETECTOR AMPLIFIER | EACH | 1 |
| PEDESTRIAN PUSH-BUTTON | EACH | 8 |
| TEMPORARY TRAFFIC SIGNAL INSTALLATION | EACH | 1 |
| REMOVE EXISTING TRAFFIC SIGNAL EQUIPMENT | EACH | 1 |
| REMOVE EXISTING HANDHOLE | EACH | 12 |
| REMOVE EXISTING CONCRETE FOUNDATION | EACH | 8 |
| ELECTRIC CABLE IN CONDUIT NO. 20 3/C, TWISTED, SHIELDED | FOOT | 764 |
| RE-OPTIMIZE TRAFFIC SIGNAL SYSTEM LEVEL 2 | EACH | 1 |
| TEMPORARY TRAFFIC SIGNAL TIMING | EACH | 1 |



INTERSECTION AND SAMPLING (SYSTEM) DETECTORS

INTERSECTION AND SAMPLING (SYSTEM) DETECTORS

INTERCONNECT TO DUNHAM ROAD

INTERCONNECT TO LYMAN AVENUE

- NO. 14 TRACER CABLE
- NO. 62.5/125 MM12F & SM12F FIBER OPTIC CABLE INTERCONNECT TO DUNHAM ROAD
- ITEMS INCLUDED IN INTERCONNECT SCHEDULE OF QUANTITIES

- NO. 14 TRACER CABLE
- NO. 62.5/125 MM12F & SM12F FIBER OPTIC CABLE INTERCONNECT TO LYMAN AVENUE

INTERCONNECT TO CHECNUT COURT

THE END OF THE TRACER CABLE SHALL BE CONTINUOUS AND EXTEND INTO THE CONTROLLER CABINET

| DPCDOT TRAFFIC SIGNAL INSTALLATION ELECTRICAL SERVICE REQUIREMENTS | | | | | | TOTAL WATTAGE |
|--|-----------|----------------|-------------|-------------|--|---------------|
| TYPE | NO. LAMPS | WATTAGE INCAND | WATTAGE LED | % OPERATION | | |
| SIGNAL (RED) | 18 | | 10 | 60 | | 108 |
| (YELLOW) | 18 | | 22 | 3 | | 11.88 |
| (GREEN) | 18 | | 12 | 37 | | 79.92 |
| SIGNAL (RED ARROW) | 8 | | 10 | 85 | | 68 |
| (YELLOW ARROW) | 16 | | 22 | 2 | | 7.04 |
| (GREEN ARROW) | 16 | | 12 | 13 | | 24.96 |
| PED. SIGNAL (HAND) | 8 | | 10 | 5 | | 4 |
| (PERSON) | 8 | | 22 | 95 | | 167.2 |
| CONTROLLER | 1 | | 100 | 100 | | 100 |
| LUMINAIRE | 4 | 310 | | 100 | | 1240 |
| VIDEO SYSTEM | 1 | 150 | | 50 | | 150 |
| TOTAL = | | | | | | 1916.0 |

ENERGY COST TO: DuPage County Division of Transportation
421 N. County Farm Road
Wheaton, IL 60187-2553

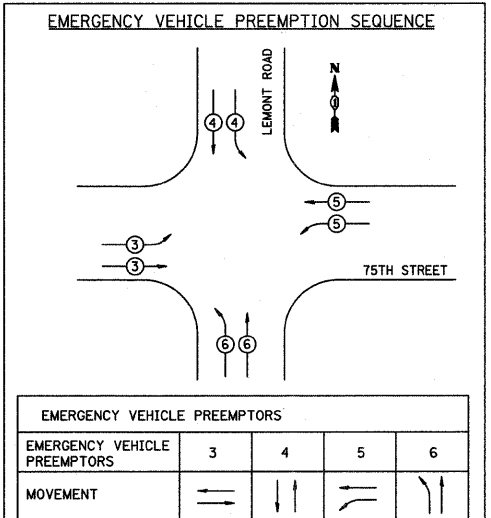
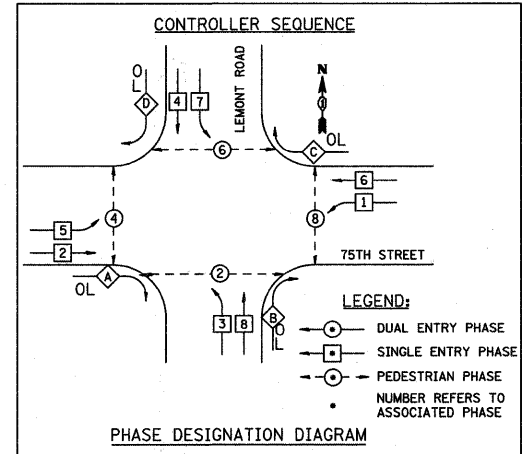
ENERGY SUPPLY: CONTACT: DAVE BALLINGER
PHONE: 847-724-5717
COMPANY: ComEd

THE TRAFFIC SIGNAL CONTROL EQUIPMENT FOR THIS PROJECT SHALL BE "ECONOLITE" TO MATCH THE EXISTING ADJACENT SYSTEM.

RESTORATION OF WORK AREA, RESTORATION OF THE TRAFFIC SIGNAL WORK AREA SHALL BE INCIDENTAL TO THE RELATED PAY ITEM SUCH AS FOUNDATION, CONDUIT, HANDHOLE, TRENCH AND BACKFILL, ETC., AND NO EXTRA COMPENSATION SHALL BE ALLOWED. ALL ROADWAY SURFACES SUCH AS SHOULDERS, MEDIANS, SIDEWALKS, PAVEMENT, ETC. SHALL BE REPLACED IN KIND. ALL DAMAGE TO MOWED LAWNS SHALL BE REPLACED WITH AN APPROVED SOD, AND ALL DAMAGE TO UNMOWED FIELDS SHALL BE SEEDED IN ACCORDANCE WITH STANDARD SPECIFICATIONS 252 AND 250 RESPECTIVELY.

CABLE PLAN NOT TO SCALE

| PHASE DESIGNATION DIAGRAM | | | |
|---------------------------|------------------|-----------------|--|
| OVERLAP LETTER | PERMISSIVE PHASE | PROTECTED PHASE | |
| A | = 2 | + 3 | |
| B | = 8 | + 1 | |
| C | = 6 | + 7 | |
| D | = 4 | + 5 | |



| EMERGENCY VEHICLE PREEMPTORS | | | | |
|------------------------------|---|---|---|---|
| EMERGENCY VEHICLE PREEMPTORS | 3 | 4 | 5 | 6 |
| MOVEMENT | → | → | → | → |

FILE NAME = F:\MS1-020 75th st. change.dwg DATE = 9/7/2011

Bollinger, Lach & Associates, Inc.
ITASCA, ILLINOIS

USER NAME = gellwanger
DESIGNED - GJE
DRAWN - DC
CHECKED - JP
PLOT SCALE = 50.0000' / IN.
PLOT DATE = 9/7/2011

REVISIONS
REVISED -
REVISED -
REVISED -
DATE - 9/08/11

STATE OF ILLINOIS
DEPARTMENT OF TRANSPORTATION

CABLE CABLE PLAN, PHASE DESIGNATION DIAGRAM AND EMERGENCY VEHICLE PREEMPTION SEQUENCE
75TH STREET AT LEMONT ROAD

| F.A.P. RTE. | SECTION | COUNTY | TOTAL SHEETS | SHEET NO. |
|-------------|----------------|--------|--------------|-----------|
| 0369 | 07-00232-04-WR | DUPAGE | 198 | 119 |

CONTRACT NO. 63632
ILLINOIS FED. AID PROJECT

SCALE: NONE SHEET NO. 119 OF 198 SHEETS STA. TO STA.