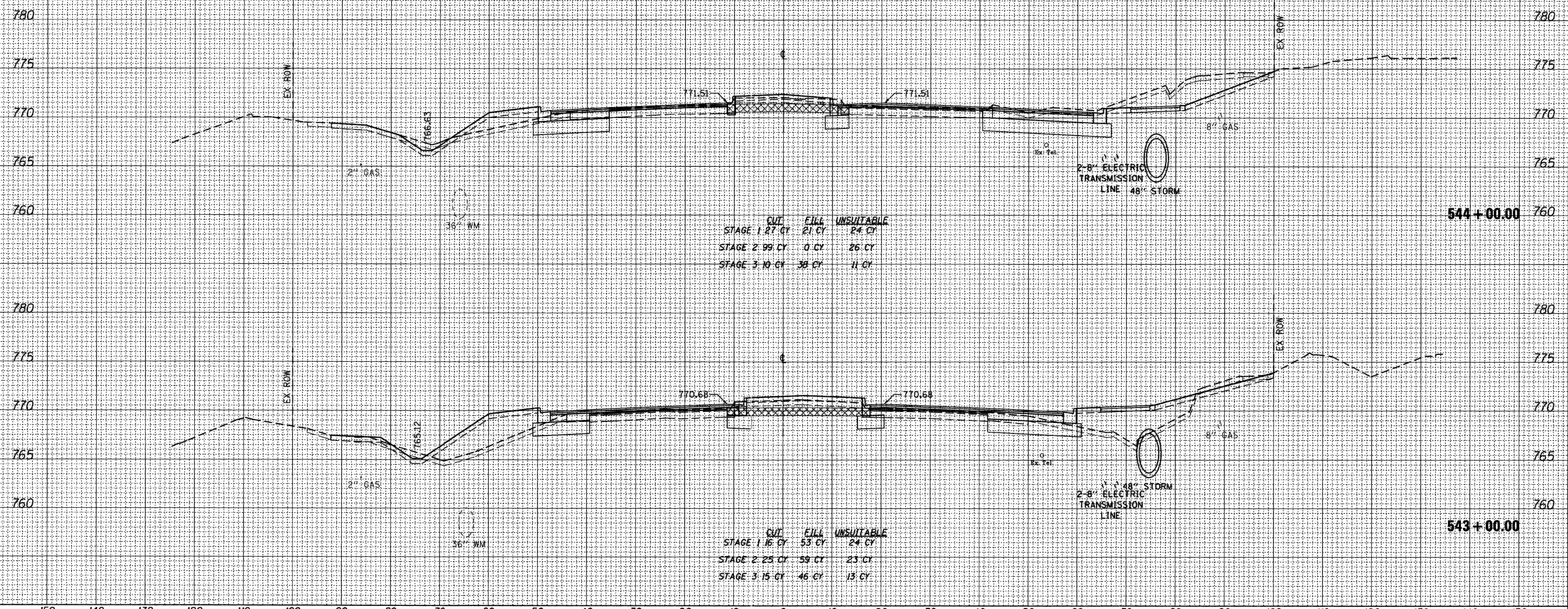


150 140 130 120 110 100 90 80 70 60 50 40 30 20 10 0 10 20 30 40 50 60 70 80 90 100 110 120 130 140 150

75TH STREET

DATE	
BY	
SURVEYED	
PLOTTED	
TEMPLATE	
NOTE BOOK	
AREAS CHECKED	
NO.	

DATE	
BY	
SURVEYED	
PLOTTED	
TEMPLATE	
NOTE BOOK	
AREAS CHECKED	
NO.	



150 140 130 120 110 100 90 80 70 60 50 40 30 20 10 0 10 20 30 40 50 60 70 80 90 100 110 120 130 140 150

B Bollinger, Lach & Associates, Inc.
ITASCA, ILLINOIS

USER NAME = gellwanger	DESIGNED - GJE	REVISED -
PLOT SCALE = 10,0000' / IN.	DRAWN - DC	REVISED -
PLOT DATE = 9/7/2011	CHECKED - JP	REVISED -
	DATE - 09/08/11	REVISED -

STATE OF ILLINOIS
DEPARTMENT OF TRANSPORTATION

V: 1"=5'		SCALE: H: 1"=10'	
CROSS SECTIONS 75TH STREET		SHEET NO. 170 OF 198 SHEETS	
		STA. 543+00.00 TO STA. 544+00.00	

F.A.P. RTE. 0369	SECTION 07-00232-04-WR	COUNTY DUPAGE	TOTAL SHEETS 198	SHEET NO. 170
CONTRACT NO. 63632			ILLINOIS FED. AID PROJECT	

FILE NAME = F:\451-0230 75th st dupage.dwg