

INDEX OF SHEETS

- 1 COVER SHEET AND INDEX OF SHEETS
- 2 GENERAL NOTES AND HIGHWAY STANDARDS
- 3 SUMMARY OF QUANTITIES
- 4 TYPICAL SECTIONS
- 5 ALIGNMENT, TIES AND BENCHMARKS
- 6-7 IMPROVEMENT PLAN
- 8-9 PAVEMENT MARKING PLAN
- 10 VILLAGE DETAILS
- 11 BD-08 FRAMES AND LIDS ADJUSTMENT WITH MILLING
- 12 BD-22 PAVEMENT PATCHING FOR HMA SURFACED PAVEMENT
- 13 BD-32 BUTT JOINT AND HMA TAPER DETAILS
- 14 TC-10 TRAFFIC CONTROL AND PROTECTION FOR SIDE ROADS, INTERSECTIONS AND DRIVEWAYS
- 15 TC-13 DISTRICT ONE TYPICAL PAVEMENT MARKINGS
- 16 TC-16 PAVEMENT MARKING LETTERS AND SYMBOLS FOR TRAFFIC STAGING
- 17 TC-22 ARTERIAL ROAD INFORMATION SIGN
- 18 TC-26 DRIVEWAY ENTRANCE SIGNING
- 19 TS-07 DETECTOR LOOP INSTALLATION DETAILS FOR ROADWAY RESURFACING

TRAFFIC DATA

ADT:
5,000 VPD (2009) 8,000 VPD (2040)

POSTED SPEED

30 MPH (EXISTING) 35 MPH (EXISTING)
30 MPH (PROPOSED) 35 MPH (PROPOSED)

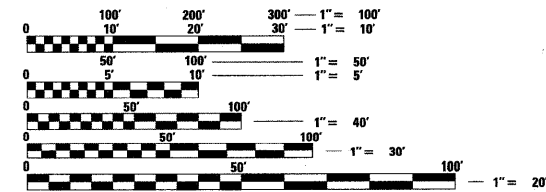
FUNCTIONAL CLASSIFICATION

COLLECTOR - URBAN

PROJECT IS LOCATED IN
THE VILLAGE OF SCHAUMBURG

PROJECT
PROJECT BEGINS
STATION 101+11

PROJECT
PROJECT ENDS
STATION 154+38



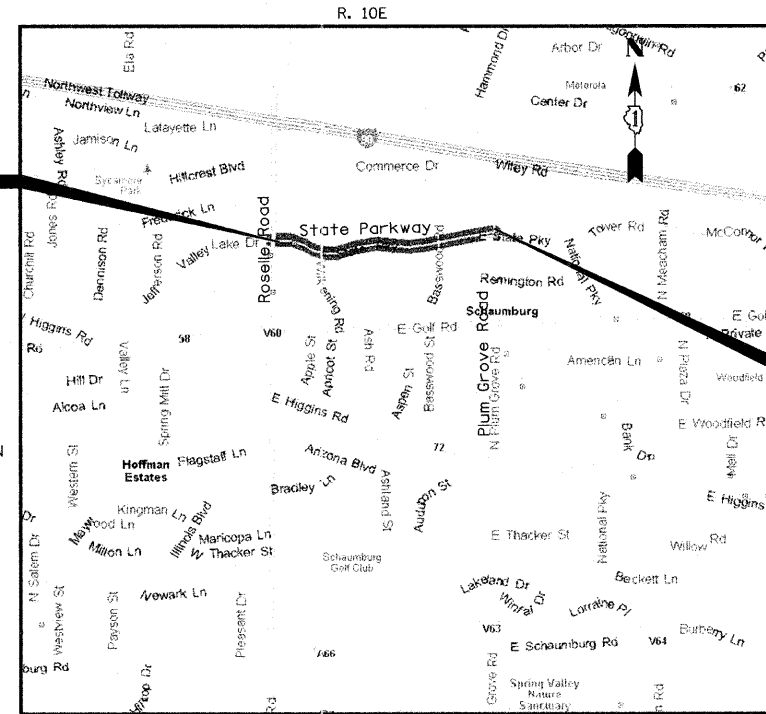
FULL SIZE PLANS HAVE BEEN PREPARED USING STANDARD ENGINEERING SCALES. REDUCED SIZED PLANS WILL NOT CONFORM TO STANDARD SCALES. IN MAKING MEASUREMENTS ON REDUCED PLANS, THE ABOVE SCALES MAY BE USED.

J.U.L.I.E.
JOINT UTILITY LOCATION INFORMATION FOR EXCAVATION
1-800-892-0123
OR 811

CONTRACT NO. 63637

STATE OF ILLINOIS
DEPARTMENT OF TRANSPORTATION
DIVISION OF HIGHWAYS
**PLANS FOR PROPOSED
FEDERAL AID HIGHWAY**
FAU ROUTE 1103 (STATE PARKWAY)
FAP ROUTE 0364 (ROSELLE ROAD) TO FAU ROUTE 2582 (PLUM GROVE ROAD)
RESURFACING

SECTION 11-00106-00-RS
PROJECT M-9003(827)
COOK COUNTY
JOB NO. C-91-571-11



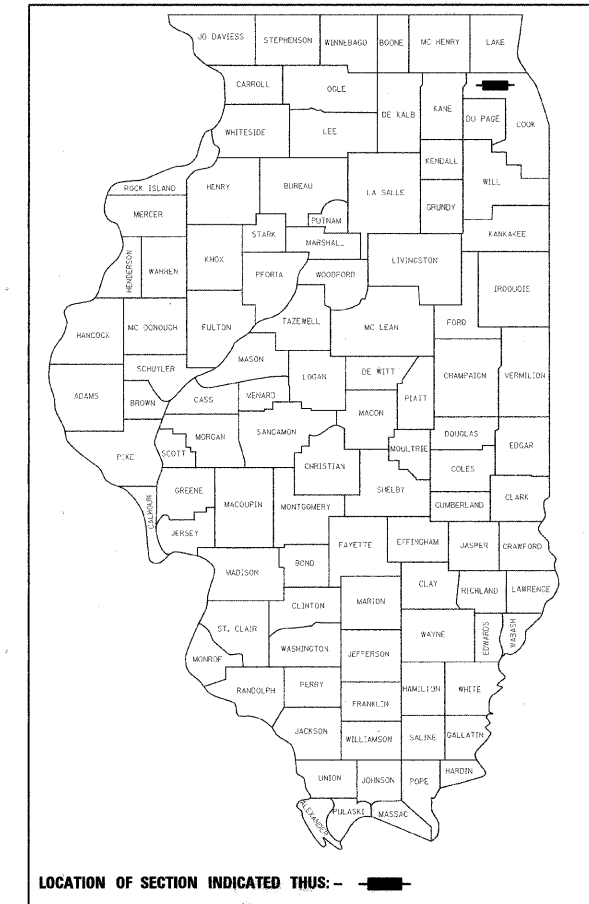
LOCATION MAP

NOT TO SCALE

PROJECT LENGTH (GROSS AND NET)
5,327 FT (1.01 MILES)

F.A.U. RTE.	SECTION	COUNTY	TOTAL SHEETS	SHEET NO.
1103	11-00106-00-RS	COOK	19	1

CONTRACT NO. 63637



STATE OF ILLINOIS
DEPARTMENT OF TRANSPORTATION
DIVISION OF HIGHWAYS

APPROVED ON: September 7, 2011
Steven R. Weinstein
VILLAGE OF SCHAUMBURG, DIRECTOR OF ENGINEERING

PASSED September 29, 2011
Christoph M. Halz
DISTRICT 1 ENGINEER OF LOCAL ROADS & STREETS

RELEASING FOR BID
BASED ON LIMITED
REVIEW September 13, 2011
Diana M. O'Keefe
DEPUTY DIRECTOR OF HIGHWAYS, REGION 1 ENGINEER

**PRINTED BY THE AUTHORITY
OF THE STATE OF ILLINOIS**

DAVID W. BLOCK
062-050966
REGISTERED
PROFESSIONAL
ENGINEER
OF
ILLINOIS
9-7-2011

David W. Block

DAVID W. BLOCK, P.E.
NO. 062-050966
EXP. DATE 11/30/11

1475 EAST WOODFIELD ROAD, SUITE 600
SCHAUMBURG, ILLINOIS 60173
PROGRAM AND OFFICE ENGINEER: CHARLES F. RIDDLE, P.E., (847) 705-4406, SCHAUMBURG, IL

