

PROP. CURVE ALIGN A-1 PI STA. = 100+32.45 Δ = 63° 49' 31" (RT) D = 114° 35' 30" R = 50.00' T = 31.14' L = 55.70' E = 8.90' P.C. STA = 100+01.31 P.T. STA = 100+57.01	PROP. CURVE ALIGN A-2 PI STA. = 101+27.48 Δ = 20° 42' 44" (RT) D = 28° 38' 52" R = 200.00' T = 36.55' L = 72.30' E = 3.31' P.C. STA = 100+90.93 P.T. STA = 101+63.23	PROP. CURVE ALIGN A-3 PI STA. = 104+04.73 Δ = 95° 20' 08" (LT) D = 26° 02' 37" R = 200.00' T = 241.50' L = 366.06' E = 106.69' P.C. STA = 101+63.23 P.T. STA = 105+29.29	PROP. CURVE ALIGN A-4 PI STA. = 106+13.95 Δ = 16° 55' 56" (RT) D = 22° 55' 06" R = 250.00' T = 37.21' L = 73.88' E = 2.75' P.C. STA = 105+76.74 P.T. STA = 106+50.62	PROP. CURVE ALIGN A-5 PI STA. = 109+55.57 Δ = 52° 28' 15" (RT) D = 17° 21' 44" R = 220.00' T = 162.63' L = 302.21' E = 37.90' P.C. STA = 107+92.94 P.T. STA = 110+95.15	PROP. CURVE ALIGN A-6 PI STA. = 114+17.43 Δ = 110° 49' 07" (LT) D = 26° 16' 57" R = 218.00' T = 316.12' L = 421.64' E = 166.00' P.C. STA = 111+31.31 P.T. STA = 115+52.96	PROP. CURVE ALIGN A-7 PI STA. = 116+12.66 Δ = 27° 21' 48" (LT) D = 114° 35' 30" R = 50.00' T = 12.17' L = 23.88' E = 1.46' P.C. STA = 116+00.49 P.T. STA = 116+24.37	PROP. CURVE ALIGN A-8 PI STA. = 116+31.47 Δ = 16° 10' 18" (LT) D = 114° 35' 30" R = 200.00' T = 7.10' L = 14.11' E = 0.50' P.C. STA = 116+24.37 P.T. STA = 116+38.48	PROP. CURVE ALIGN A-9 PI STA. = 116+96.13 Δ = 16° 46' 26" (RT) D = 57° 17' 45" R = 100.00' T = 14.74' L = 29.28' E = 1.08' P.C. STA = 116+81.39 P.T. STA = 117+10.67	PROP. CURVE ALIGN A-10 PI STA. = 118+92.29 Δ = 16° 46' 48" (LT) D = 28° 38' 52" R = 200.00' T = 29.50' L = 58.57' E = 2.16' P.C. STA = 118+62.79 P.T. STA = 119+21.37
---	---	---	---	--	--	---	---	---	--

PROP. CURVE ALIGN A-11 PI STA. = 121+14.93 Δ = 77° 28' 55" (LT) D = 45° 50' 12" R = 125.00' T = 100.29' L = 169.04' E = 35.26' P.C. STA = 120+14.64 P.T. STA = 121+83.68	PROP. CURVE ALIGN A-12 PI STA. = 127+41.17 Δ = 26° 48' 37" (LT) D = 36° 57' 54" R = 155.00' T = 36.94' L = 72.53' E = 4.34' P.C. STA = 127+04.23 P.T. STA = 127+76.76	PROP. CURVE ALIGN A-13 PI STA. = 128+00.13 Δ = 17° 08' 49" (LT) D = 36° 57' 54" R = 155.00' T = 23.37' L = 46.39' E = 1.75' P.C. STA = 127+76.76 P.T. STA = 128+23.15	PROP. CURVE ALIGN A-14 PI STA. = 128+78.50 Δ = 28° 34' 43" (LT) D = 57° 17' 45" R = 100.00' T = 25.47' L = 49.88' E = 3.19' P.C. STA = 128+53.03 P.T. STA = 129+02.91	PROP. CURVE ALIGN A-15 PI STA. = 131+58.67 Δ = 96° 17' 58" (RT) D = 57° 17' 45" R = 100.00' T = 111.65' L = 168.07' E = 49.88' P.C. STA = 130+47.03 P.T. STA = 132+15.10	PROP. CURVE ALIGN A-16 PI STA. = 133+06.78 Δ = 30° 35' 30" (LT) D = 57° 17' 45" R = 100.00' T = 27.35' L = 53.39' E = 3.67' P.C. STA = 132+79.43 P.T. STA = 133+32.82
---	--	--	--	---	--

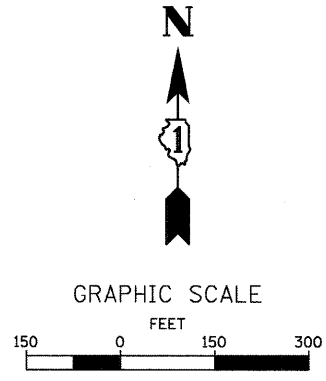
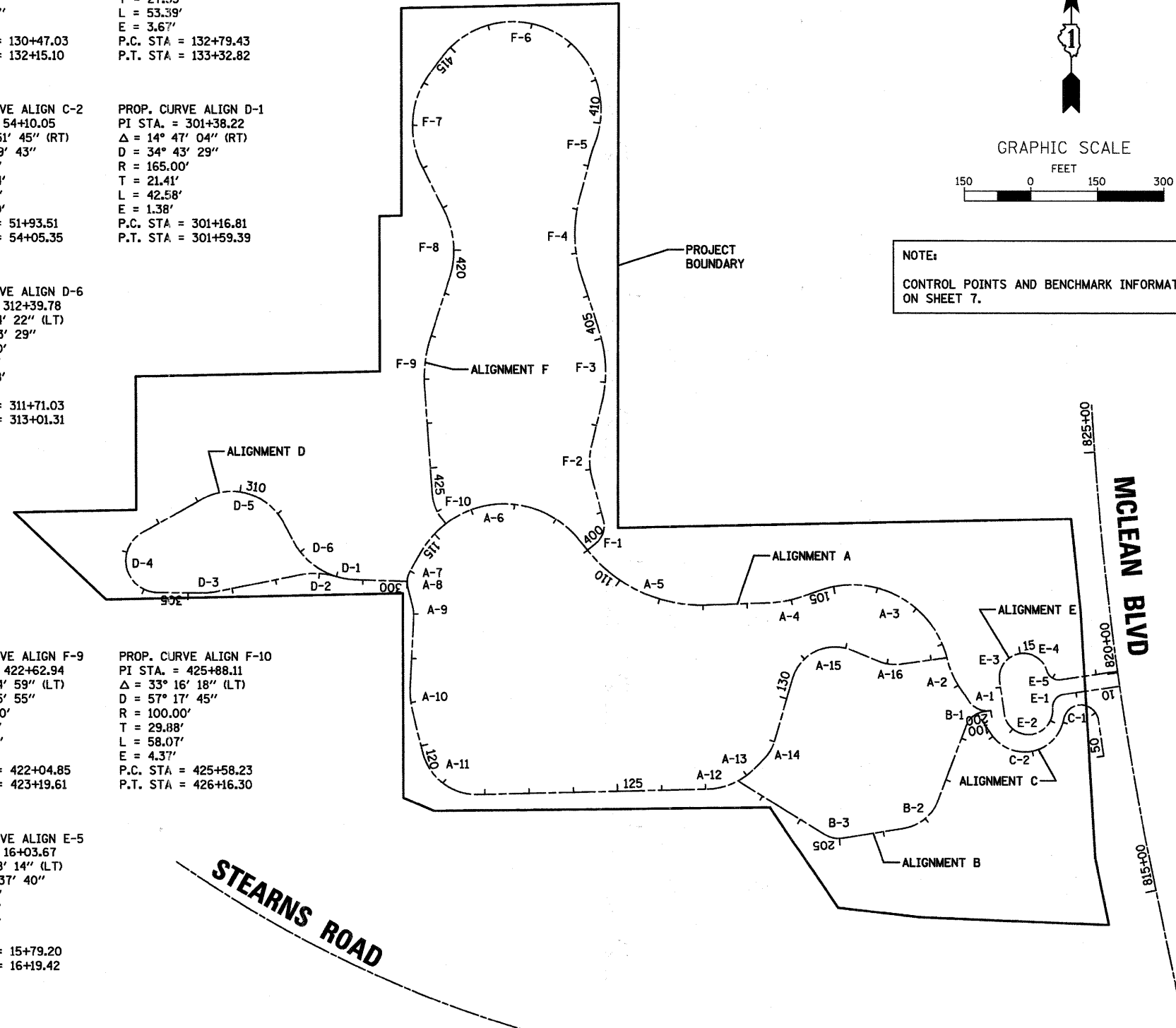
PROP. CURVE ALIGN B-1 PI STA. = 200+45.70 Δ = 61° 12' 16" (LT) D = 114° 35' 30" R = 50.00' T = 29.57' L = 53.41' E = 8.09' P.C. STA = 200+16.13 P.T. STA = 200+69.54	PROP. CURVE ALIGN B-2 PI STA. = 203+06.86 Δ = 60° 12' 24" (RT) D = 57° 17' 45" R = 100.00' T = 57.98' L = 105.08' E = 15.59' P.C. STA = 202+48.88 P.T. STA = 203+53.96	PROP. CURVE ALIGN B-3 PI STA. = 205+14.93 Δ = 40° 39' 25" (RT) D = 95° 29' 35" R = 60.00' T = 22.23' L = 42.58' E = 3.99' P.C. STA = 204+92.70 P.T. STA = 205+35.28	PROP. CURVE ALIGN C-1 PI STA. = 53+17.58 Δ = 160° 47' 10" (RT) D = 143° 14' 22" R = 40.00' T = 236.32' L = 112.25' E = 199.68' P.C. STA = 50+81.26 P.T. STA = 51+93.51	PROP. CURVE ALIGN C-2 PI STA. = 54+10.05 Δ = 134° 51' 45" (RT) D = 63° 39' 43" R = 90.00' T = 216.54' L = 211.84' E = 144.50' P.C. STA = 51+93.51 P.T. STA = 54+05.35	PROP. CURVE ALIGN D-1 PI STA. = 301+38.22 Δ = 14° 47' 04" (RT) D = 34° 43' 29" R = 165.00' T = 21.41' L = 42.58' E = 1.38' P.C. STA = 301+16.81 P.T. STA = 301+59.39
---	---	--	---	--	---

PROP. CURVE ALIGN D-2 PI STA. = 302+02.81 Δ = 27° 52' 09" (LT) D = 32° 44' 26" R = 175.00' T = 43.42' L = 85.12' E = 5.31' P.C. STA = 301+59.39 P.T. STA = 302+44.51	PROP. CURVE ALIGN D-3 PI STA. = 304+51.53 Δ = 11° 48' 14" (RT) D = 28° 38' 52" R = 200.00' T = 20.68' L = 41.20' E = 1.07' P.C. STA = 304+30.85 P.T. STA = 304+72.06	PROP. CURVE ALIGN D-4 PI STA. = 308+40.53 Δ = 150° 22' 17" (RT) D = 79° 34' 39" R = 72.00' T = 272.23' L = 188.96' E = 209.59' P.C. STA = 305+68.30 P.T. STA = 307+57.26	PROP. CURVE ALIGN D-5 PI STA. = 310+48.11 Δ = 45° 56' 00" (RT) D = 43° 04' 46" R = 133.00' T = 135.18' L = 211.08' E = 56.64' P.C. STA = 309+12.93 P.T. STA = 311+24.01	PROP. CURVE ALIGN D-6 PI STA. = 312+39.78 Δ = 90° 56' 00" (RT) D = 34° 43' 29" R = 165.00' T = 68.75' L = 130.28' E = 13.75' P.C. STA = 311+71.03 P.T. STA = 313+01.31
---	---	---	--	---

PROP. CURVE ALIGN F-1 PI STA. = 400+57.83 Δ = 65° 51' 39" (LT) D = 114° 35' 30" R = 50.00' T = 32.38' L = 57.47' E = 9.57' P.C. STA = 400+25.45 P.T. STA = 400+82.92	PROP. CURVE ALIGN F-2 PI STA. = 402+17.82 Δ = 29° 13' 38" (RT) D = 38° 11' 50" R = 150.00' T = 39.11' L = 76.52' E = 5.01' P.C. STA = 401+78.71 P.T. STA = 402+55.23	PROP. CURVE ALIGN F-3 PI STA. = 404+37.36 Δ = 31° 47' 17" (LT) D = 19° 05' 55" R = 300.00' T = 85.42' L = 166.44' E = 11.92' P.C. STA = 403+51.94 P.T. STA = 405+18.38	PROP. CURVE ALIGN F-4 PI STA. = 407+37.86 Δ = 32° 42' 19" (RT) D = 19° 05' 55" R = 300.00' T = 88.03' L = 171.24' E = 12.65' P.C. STA = 406+49.83 P.T. STA = 408+21.08
---	---	---	---

PROP. CURVE ALIGN F-5 PI STA. = 409+39.12 Δ = 7° 18' 47" (RT) D = 28° 38' 52" R = 200.00' T = 12.78' L = 25.53' E = 0.41' P.C. STA = 409+26.34 P.T. STA = 409+51.87	PROP. CURVE ALIGN F-6 PI STA. = 424+83.37 Δ = 165° 07' 10" (LT) D = 28° 38' 52" R = 200.00' T = 1,531.50' L = 576.38' E = 1,344.50' P.C. STA = 409+51.87 P.T. STA = 415+28.25	PROP. CURVE ALIGN F-7 PI STA. = 416+97.39 Δ = 63° 52' 37" (LT) D = 28° 38' 52" R = 200.00' T = 124.68' L = 222.97' E = 35.68' P.C. STA = 415+72.72 P.T. STA = 417+95.69	PROP. CURVE ALIGN F-8 PI STA. = 419+89.86 Δ = 44° 45' 49" (RT) D = 28° 38' 52" R = 200.00' T = 82.36' L = 156.25' E = 16.29' P.C. STA = 419+07.50 P.T. STA = 420+63.75	PROP. CURVE ALIGN F-9 PI STA. = 422+62.94 Δ = 21° 54' 59" (LT) D = 19° 05' 55" R = 300.00' T = 58.09' L = 114.75' E = 5.57' P.C. STA = 422+04.85 P.T. STA = 423+19.61	PROP. CURVE ALIGN F-10 PI STA. = 425+88.11 Δ = 33° 16' 18" (LT) D = 57° 17' 45" R = 100.00' T = 29.88' L = 58.07' E = 4.37' P.C. STA = 425+58.23 P.T. STA = 426+16.30
--	--	--	---	--	--

PROP. CURVE ALIGN E-1 PI STA. = 11+55.02 Δ = 85° 07' 26" (LT) D = 190° 59' 09" R = 30.00' T = 27.55' L = 44.57' E = 10.73' P.C. STA = 11+27.47 P.T. STA = 11+72.04	PROP. CURVE ALIGN E-2 PI STA. = 17+67.59 Δ = 169° 26' 50" (RT) D = 104° 10' 27" R = 55.00' T = 595.55' L = 162.66' E = 543.09' P.C. STA = 11+72.04 P.T. STA = 13+34.70	PROP. CURVE ALIGN E-3 PI STA. = 14+92.72 Δ = 108° 02' 30" (RT) D = 104° 10' 27" R = 55.00' T = 75.76' L = 103.71' E = 38.62' P.C. STA = 14+16.96 P.T. STA = 15+20.68	PROP. CURVE ALIGN E-4 PI STA. = 15+53.05 Δ = 60° 57' 45" (RT) D = 104° 10' 27" R = 55.00' T = 32.37' L = 58.52' E = 8.82' P.C. STA = 15+20.68 P.T. STA = 15+79.20	PROP. CURVE ALIGN E-5 PI STA. = 16+03.67 Δ = 82° 18' 14" (LT) D = 204° 37' 40" R = 28.00' T = 24.47' L = 40.22' E = 9.19' P.C. STA = 15+79.20 P.T. STA = 16+19.42
---	---	---	--	--



NOTE:  
CONTROL POINTS AND BENCHMARK INFORMATION SHOWN ON SHEET 7.

FILE NAME = \\N:\Projects\2011\110131\_Stearns\Drawings\110131\_02.dwg

**WILLS BURKE KELSEY ASSOCIATES LTD.**  
116 West Main Street, Suite 101  
St. Charles, Illinois 60174

USER NAME = nparr19	DESIGNED - PJF	REVISED -
PLOT SCALE = 1"=150'	DRAWN - NDP	REVISED -
PLOT DATE = 8/30/2011	CHECKED - PDK	REVISED -
	DATE - 8/29/11	REVISED -

**STATE OF ILLINOIS  
DEPARTMENT OF TRANSPORTATION**

**MCCLEAN BLVD ENVIRONMENTAL ADAPTIVE MANAGEMENT PLANS  
ALIGNMENT, TIES AND BENCHMARKS**

SCALE: 1"=150' SHEET NO. 2 OF 2 SHEETS STA. TO STA.

F.A.P. RTE. 361	SECTION 06-00214-11-L5	COUNTY KANE	TOTAL SHEETS 54	SHEET NO. 8
CONTRACT NO. 63638				
FED. ROAD DIST. NO. ILLINOIS FED. AID PROJECT				