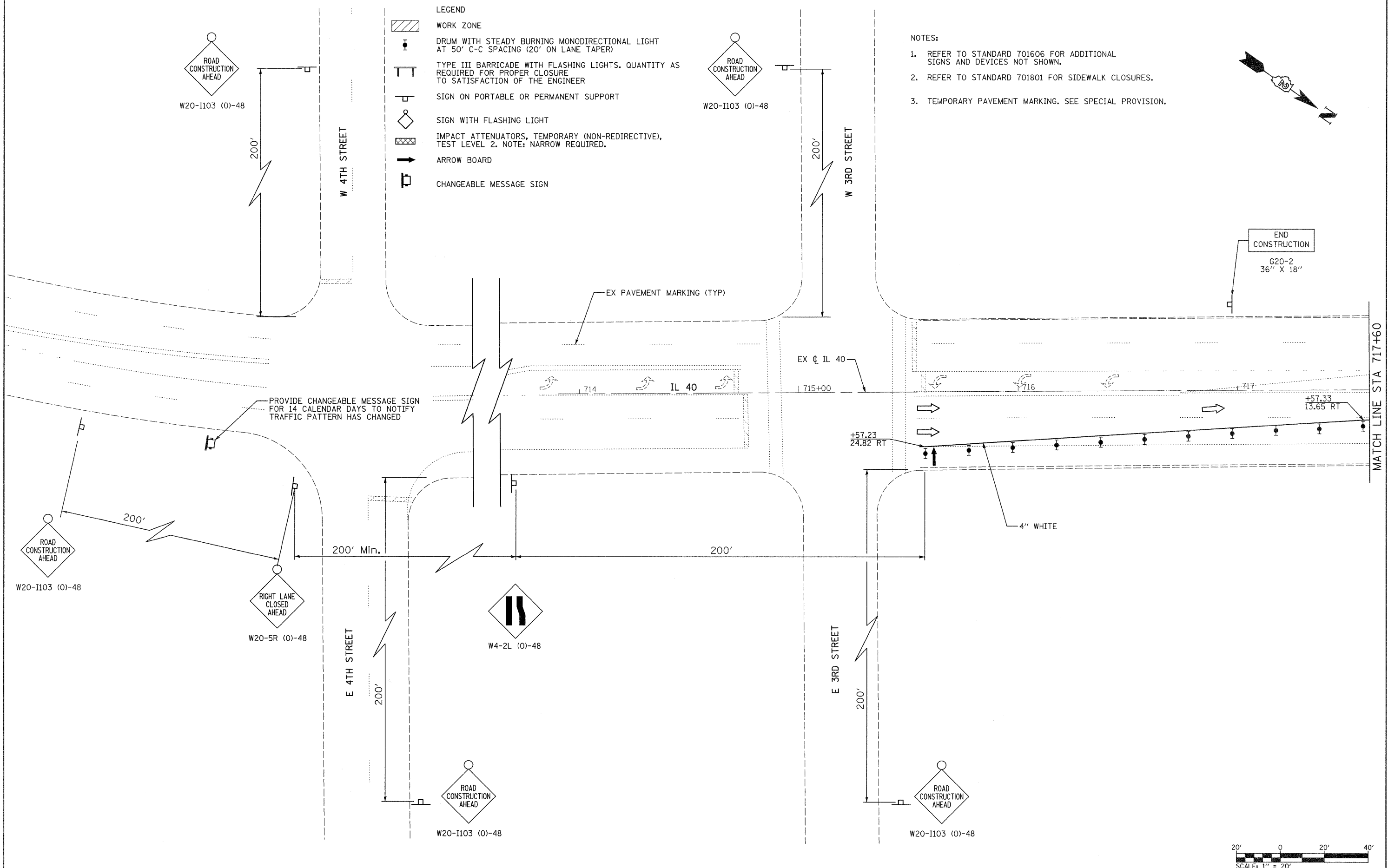
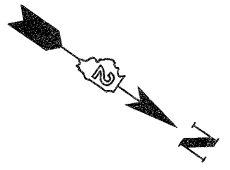




- LEGEND**
- WORK ZONE
 - DRUM WITH STEADY BURNING MONODIRECTIONAL LIGHT AT 50' C-C SPACING (20' ON LANE TAPER)
 - TYPE III BARRICADE WITH FLASHING LIGHTS. QUANTITY AS REQUIRED FOR PROPER CLOSURE TO SATISFACTION OF THE ENGINEER
 - SIGN ON PORTABLE OR PERMANENT SUPPORT
 - SIGN WITH FLASHING LIGHT
 - IMPACT ATTENUATORS, TEMPORARY (NON-REDIRECTIVE), TEST LEVEL 2. NOTE: NARROW REQUIRED.
 - ARROW BOARD
 - CHANGEABLE MESSAGE SIGN



- NOTES:**
1. REFER TO STANDARD 701606 FOR ADDITIONAL SIGNS AND DEVICES NOT SHOWN.
 2. REFER TO STANDARD 701801 FOR SIDEWALK CLOSURES.
 3. TEMPORARY PAVEMENT MARKING. SEE SPECIAL PROVISION.



END CONSTRUCTION
G20-2
36" X 18"

MATCH LINE STA 717+60



FILE NAME =	USER NAME = grantpm	DESIGNED -	REVISED -
c:\pw_work\pwwdot\grantpm\dms80258\0264888-sht-staging15.dgn		DRAWN -	REVISED -
	PLOT SCALE = 20.00' / 1"	CHECKED -	REVISED -
	PLOT DATE = Wed Aug 31 08:47:55 2011	DATE - 2-22-2010	REVISED -

**STATE OF ILLINOIS
DEPARTMENT OF TRANSPORTATION**

**IL 40
MAINTENANCE OF TRAFFIC - STAGE 1**

SCALE: 20' SHEET NO. 15 OF 35 SHEETS STA. 714+00 TO STA. 716+00

F.A.P. RTE.	SECTION	COUNTY	TOTAL SHEETS	SHEET NO.
646	1B-2	WHITESIDE	257	42
CONTRACT NO. 64B80				
FED. ROAD DIST. NO. ILLINOIS FED. AID PROJECT				