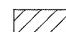


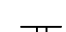




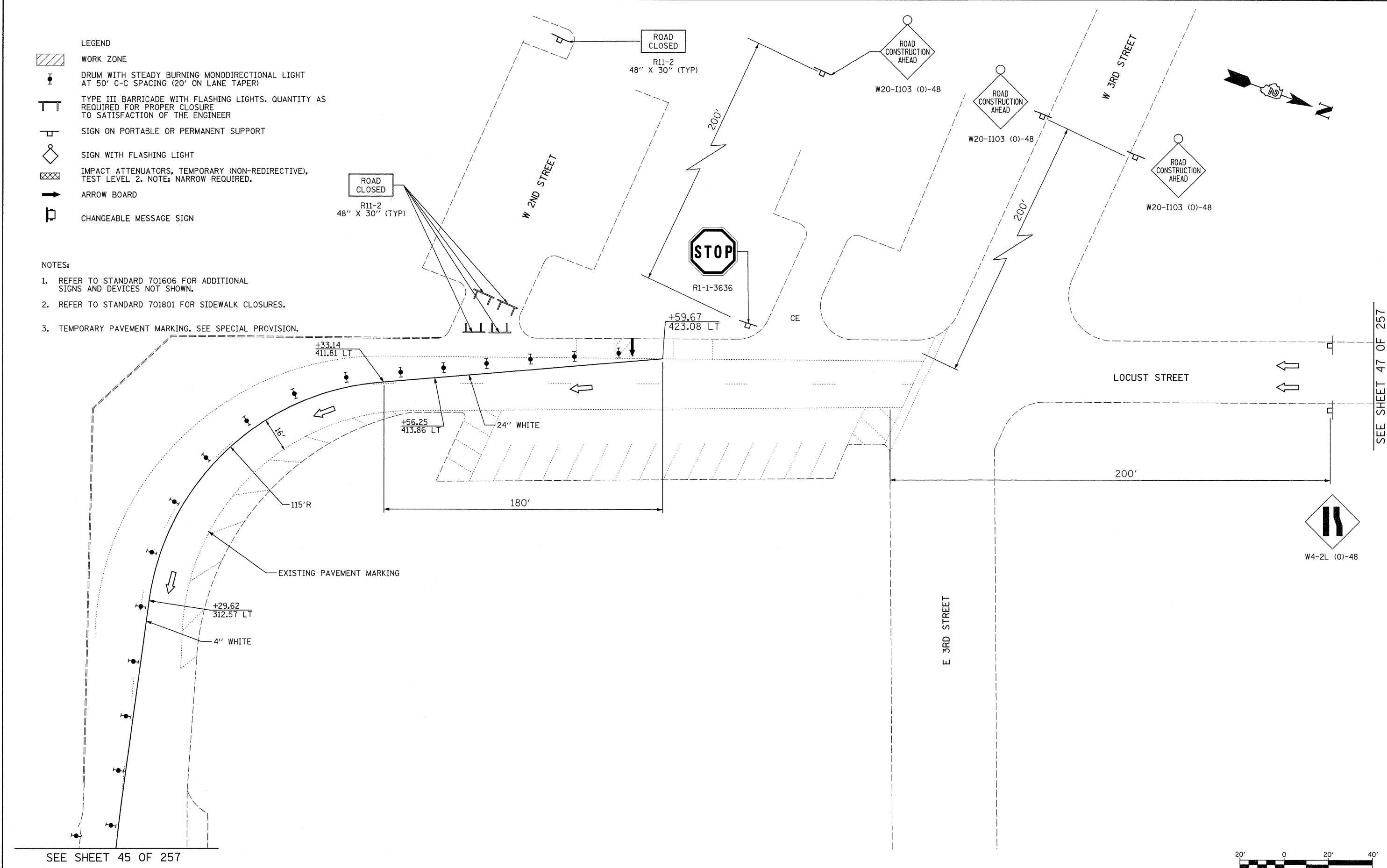


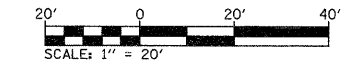
- LEGEND**
-  WORK ZONE
 -  DRUM WITH STEADY BURNING MONODIRECTIONAL LIGHT AT 50' C-C SPACING (20' ON LANE TAPER)
 -  TYPE III BARRICADE WITH FLASHING LIGHTS, QUANTITY AS REQUIRED FOR PROPER CLOSURE TO SATISFACTION OF THE ENGINEER
 -  SIGN ON PORTABLE OR PERMANENT SUPPORT
 -  SIGN WITH FLASHING LIGHT
 -  IMPACT ATTENUATORS, TEMPORARY (NON-REDIRECTIVE), TEST LEVEL 2. NOTE: NARROW REQUIRED.
 -  ARROW BOARD
 -  CHANGEABLE MESSAGE SIGN

- NOTES:**
1. REFER TO STANDARD 701606 FOR ADDITIONAL SIGNS AND DEVICES NOT SHOWN.
 2. REFER TO STANDARD 701801 FOR SIDEWALK CLOSURES.
 3. TEMPORARY PAVEMENT MARKING, SEE SPECIAL PROVISION.



SEE SHEET 45 OF 257

SEE SHEET 47 OF 257



FILE NAME =	USER NAME = grantpm	DESIGNED -	REVISED -
c:\pwork\pwork\dot\grantpm\dms80258\0264880-sht-staging19.dgn		DRAWN -	REVISED -
PLOT SCALE = 20.00' / in.		CHECKED -	REVISED -
PLOT DATE = Fri Aug 12 14:23:30 2011		DATE = 2-22-2010	REVISED -

**STATE OF ILLINOIS
DEPARTMENT OF TRANSPORTATION**

**IL 40
MAINTENANCE OF TRAFFIC - STAGE 1**

SCALE: 1" = 20' SHEET NO. 19 OF 35 SHEETS STA. TO STA.

F.A.P. RTE.	SECTION	COUNTY	TOTAL SHEETS	SHEET NO.
646	1B-2	WHITESIDE	257	46
FED. ROAD DIST. NO.			ILLINOIS FED. AID PROJECT	
			CONTRACT NO. 64B80	