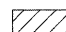







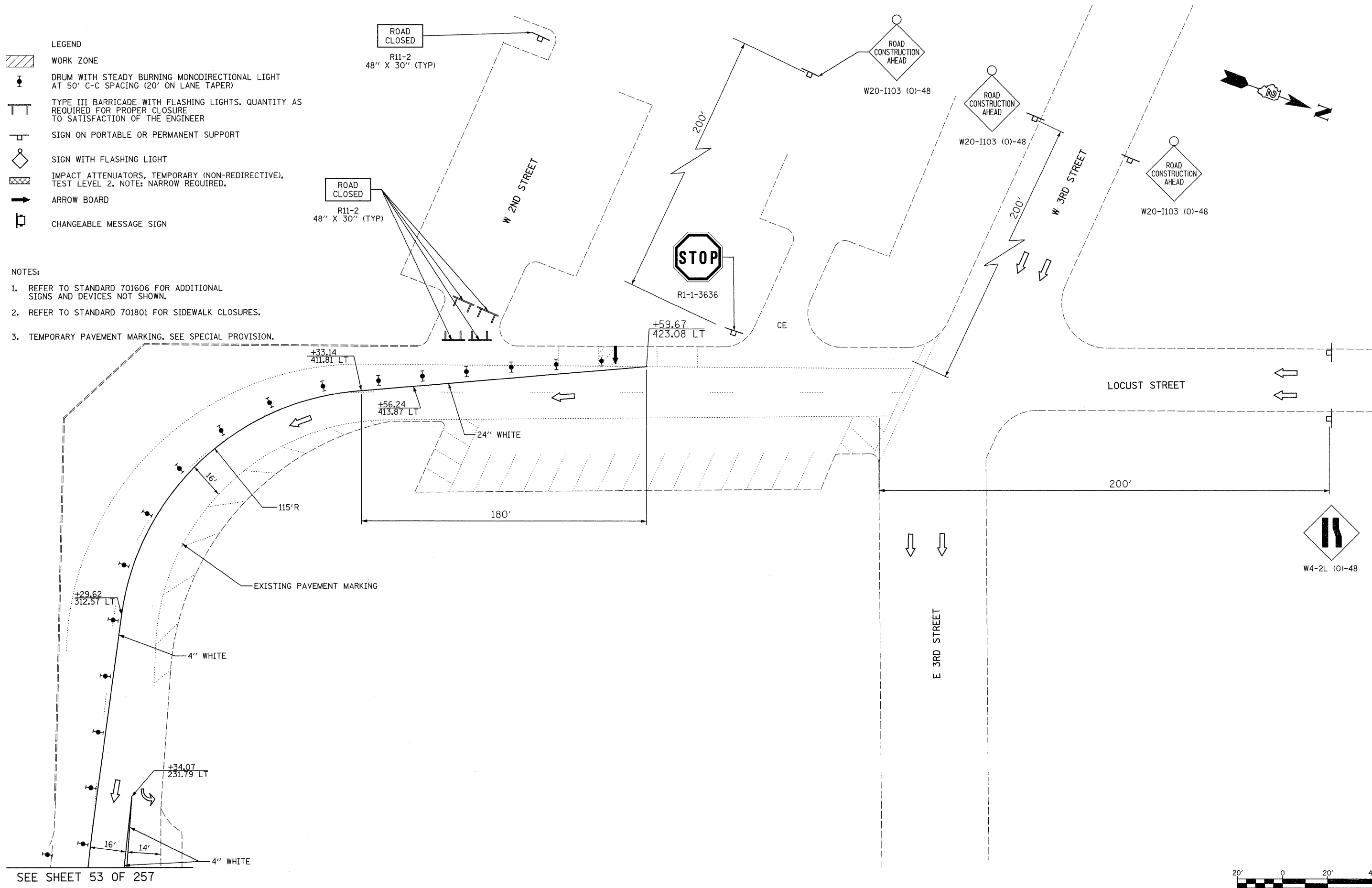


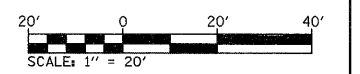
- LEGEND**
-  WORK ZONE
 -  DRUM WITH STEADY BURNING MONODIRECTIONAL LIGHT AT 50' C-C SPACING (20' ON LANE TAPER)
 -  TYPE III BARRICADE WITH FLASHING LIGHTS. QUANTITY AS REQUIRED FOR PROPER CLOSURE TO SATISFACTION OF THE ENGINEER
 -  SIGN ON PORTABLE OR PERMANENT SUPPORT
 -  SIGN WITH FLASHING LIGHT
 -  IMPACT ATTENUATORS, TEMPORARY (NON-REDIRECTIVE), TEST LEVEL 2. NOTE: NARROW REQUIRED.
 -  ARROW BOARD
 -  CHANGEABLE MESSAGE SIGN

- NOTES:**
1. REFER TO STANDARD 701606 FOR ADDITIONAL SIGNS AND DEVICES NOT SHOWN.
 2. REFER TO STANDARD 701801 FOR SIDEWALK CLOSURES.
 3. TEMPORARY PAVEMENT MARKING. SEE SPECIAL PROVISION.



SEE SHEET 53 OF 257

SEE SHEET 54 OF 257



FILE NAME =	USER NAME = grantpm	DESIGNED -	REVISED -	STATE OF ILLINOIS DEPARTMENT OF TRANSPORTATION	IL 40 MAINTENANCE OF TRAFFIC - STAGE 2	F.A.P. RTE. =	SECTION	COUNTY	TOTAL SHEETS	SHEET NO.	
ct:\pw\work\pwwork\grantpm\dms80258\0264880-shr-staging26.dgn	PLOT SCALE = 20.00' / in.	DRAWN -	REVISED -			646	1B-2	WHITESIDE	257	53	
PLOT DATE = Fri Aug 12 14:45:52 2011	DATE = 2-22-2010	CHECKED -	REVISED -			CONTRACT NO. 64B80					
		DATE = 2-22-2010	REVISED -			FED. ROAD DIST. NO. ILLINOIS FED. AID PROJECT					