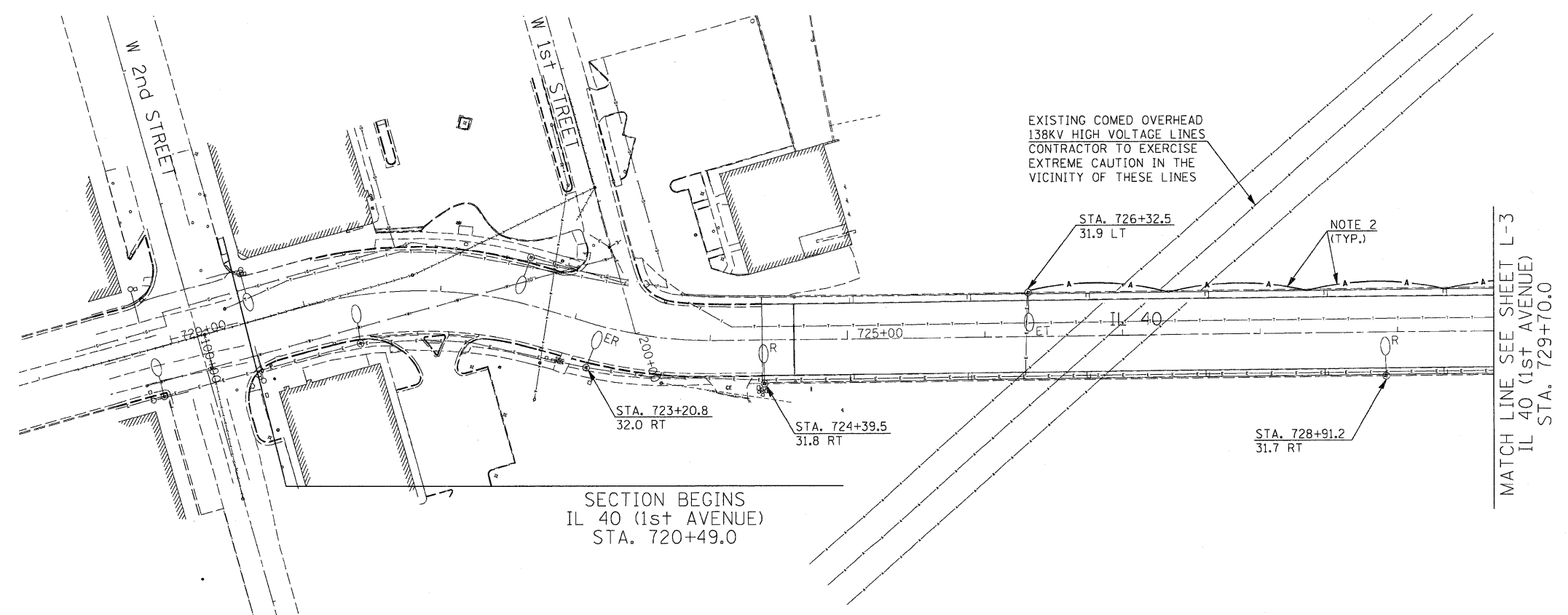




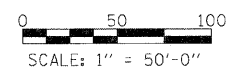
NOTES:

1. SEE DRAWING L-1 FOR ELECTRICAL GENERAL NOTES, SYMBOLS, AND SCHEDULE OF QUANTITIES.
2. AERIAL CABLE SHALL BE ATTACHED TO THE BRIDGE STRUCTURE USING CABLE SLINGS OR OTHER METHODS APPROVED BY THE ENGINEER.
3. EXISTING ELECTRIC CABLE AND PROPOSED AERIAL CABLE TO BE REMOVED AND BECOME THE PROPERTY OF THE CONTRACTOR AFTER IT IS NO LONGER NEEDED TO POWER THE EXISTING OR TEMPORARY LIGHTING. THE COST OF REMOVING THE CABLES SHALL BE INCLUDED IN THE PAY ITEM "REMOVAL OF LIGHTING UNIT, NO SALVAGE".



LEGEND:

- EXISTING LIGHTING UNIT
- EXISTING LIGHTING UNIT TO BE REMOVED
- EXISTING LIGHTING UNIT TO BE RELOCATED
- EXISTING LIGHTING UNIT TO BE USED AS TEMPORARY, REMOVED WHEN NO LONGER REQUIRED
- AERIAL CABLE, 2-1/C NO. 4, WITH MESSENGER WIRE



L-2

SINGH 300 W. ADAMS ST.
CHICAGO, IL 60606
SINGH & ASSOCIATES, INC. TEL: (312) 629-0240
CONSULTING ENGINEERS FAX: (312) 629-8445

USER NAME = dwozniarski	DESIGNED - AM	REVISED -
PLOT SCALE = 50,0000 / IN.	DRAWN - YJ	REVISED -
PLOT DATE = 7/14/2011	CHECKED - GR	REVISED -
	DATE - 04-18-2011	REVISED -

**STATE OF ILLINOIS
DEPARTMENT OF TRANSPORTATION**

IL 40 TEMPORARY LIGHTING AND REMOVAL PLAN

SCALE: 1"=50' SHEET NO. 2 OF 12 SHEETS STA. 722+76 TO STA. 729+70

F.A.P. RTE.	SECTION	COUNTY	TOTAL SHEETS	SHEET NO.
646	1B-2	WHITESIDE	257	93
FED. ROAD DIST. NO. 2 ILLINOIS FED. AID PROJECT			CONTRACT NO. 64B80	

9/FILES