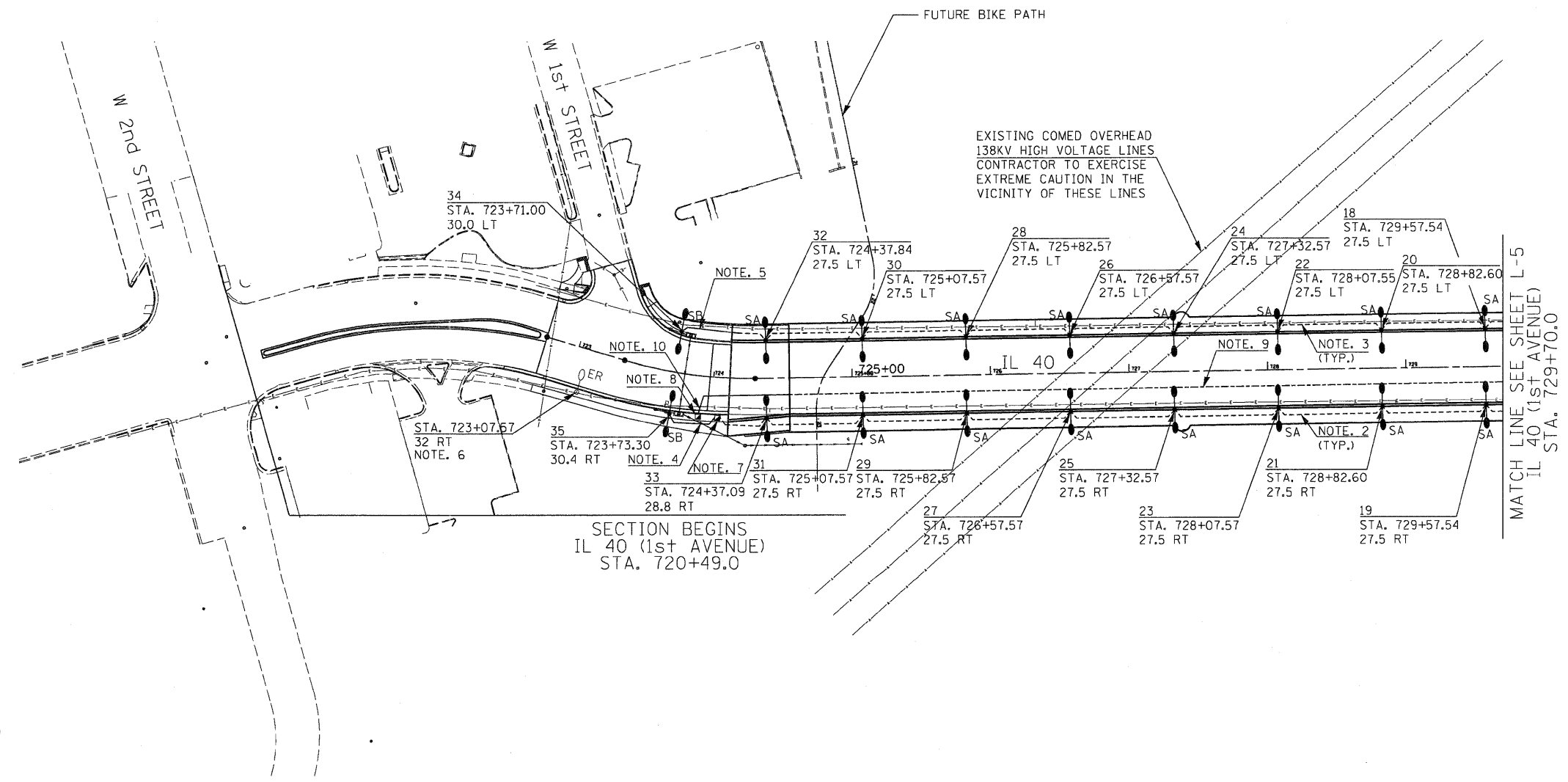




**NOTES:**

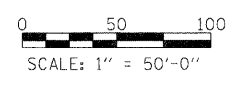
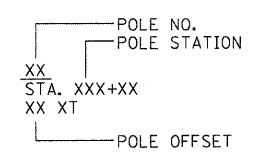
1. SEE DRAWING L-1 FOR ELECTRICAL GENERAL NOTES, SYMBOLS, AND SCHEDULE OF QUANTITIES.
2. CKT. A 2-1/C NO. 4 (FOR LIGHTING) AND CKTS. C AND D 3-1/C NO. 2 (FOR RECEPTACLES) AND 1/C NO. 6 GROUND IN CONDUIT EMBEDDED IN STRUCTURE 2" DIA., PVC
3. CKT. B 2-1/C NO. 4 (FOR LIGHTING) AND CKTS. E AND F 3-1/C NO. 2 (FOR RECEPTACLES) AND 1/C NO. 6 GROUND IN CONDUIT EMBEDDED IN STRUCTURE 2" DIA., PVC
4. CKT. A 2-1/C NO. 4 (FOR LIGHTING) AND CKT. D 2-1/C NO. 2 (FOR RECEPTACLE) AND 1/C NO. 6 GROUND IN CONDUIT IN TRENCH 2" DIA., PVC
5. CKT. B 2-1/C NO. 4 (FOR LIGHTING) AND CKT. E 2-1/C NO. 2 (FOR RECEPTACLE) AND 1/C NO. 6 GROUND IN CONDUIT IN TRENCH 2" DIA., PVC
6. CONTRACTOR SHALL RECONNECT RELOCATED LIGHT POLE TO EXISTING AERIAL CIRCUIT CONDUCTORS.
7. HANDHOLE AT STA. 724+02, 27 RT FOR FUTURE CONNECTION TO BIKE PATH
8. HANDHOLE AT STA. 723+89, 28 RT FOR FUTURE TRAFFIC SIGNAL INTERCONNECT ACROSS THE BRIDGE.
9. TWO (2) - 4" DIA., GALVANIZED STEEL CONDUITS ATTACHED TO STRUCTURE. SEE DETAILS ON SHEET L-10 AND STRUCTURAL PLANS FOR MORE INFORMATION.
10. TWO (2) - 4" DIA., GALVANIZED STEEL CONDUITS IN COMMON TRENCH.



**LEGEND:**

- ER EXISTING RELOCATED LIGHTING UNIT: LIGHT POLE, DIRECT EMBEDDED CONCRETE
- SA DECORATIVE LIGHTING UNIT: LIGHT POLE, STEEL, 21 FT. M.H., TWIN 20.5 IN. MAST ARMS, 70W HPS LUMINAIRES S-C-III, MOUNTED ON BARRIER WALL
- SB DECORATIVE LIGHTING UNIT: LIGHT POLE, STEEL, 21 FT. M.H., TWIN 20.5 IN. MAST ARMS, 70W HPS LUMINAIRES S-C-III, GROUND MOUNTED
- CONDUIT IN TRENCH (MATERIAL AND DIA. AS NOTED)
- CONDUIT ATTACHED TO STRUCTURE, 4" DIA., GALVANIZED STEEL
- CONDUIT EMBEDDED IN STRUCTURE, 2" DIA. PVC
- HANDHOLE, COMPOSITE CONCRETE

**POLE DESIGNATION SCHEME**



L-4

<b>SINGH</b> SINGH & ASSOCIATES, INC. CONSULTING ENGINEERS 300 W. ADAMS ST. CHICAGO, IL 60606 TEL: (312) 429-0240 FAX: (312) 629-8449	USER NAME = dwozniarski	DESIGNED - AM	REVISED -	<b>STATE OF ILLINOIS</b> <b>DEPARTMENT OF TRANSPORTATION</b>	<b>IL 40 PROPOSED LIGHTING PLAN</b>			F.A.P. RTE. 646	SECTION 1B-2	COUNTY WHITESIDE	TOTAL SHEETS 257	SHEET NO. 95
	PLOT SCALE = 50.0000 "/> <td>CHECKED - GR</td> <td>REVISED -</td> <td>SCALE: 1"=50'</td> <td>SHEET NO. 4 OF 12 SHEETS</td> <td>STA. 722+76 TO STA. 729+70</td> <td colspan="2">CONTRACT NO. 64B80</td>	CHECKED - GR	REVISED -		SCALE: 1"=50'	SHEET NO. 4 OF 12 SHEETS	STA. 722+76 TO STA. 729+70	CONTRACT NO. 64B80				
	PLOT DATE = 7/14/2011	DATE - 04-18-2011	REVISED -				FED. ROAD DIST. NO. 2 [ILLINOIS] FED. AID PROJECT					