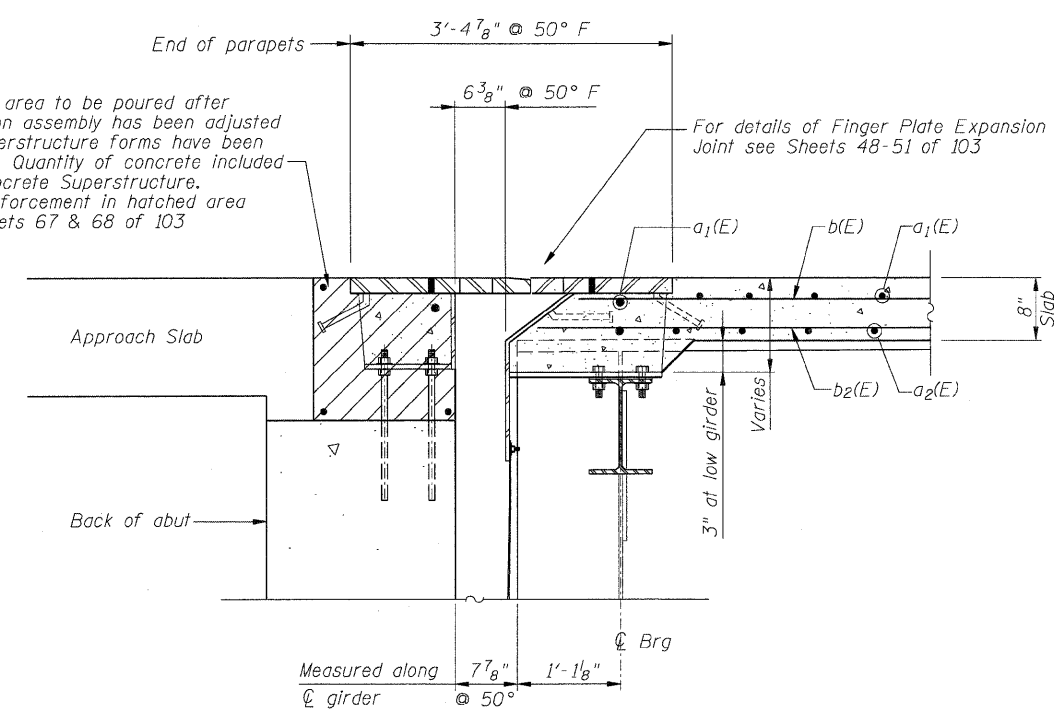
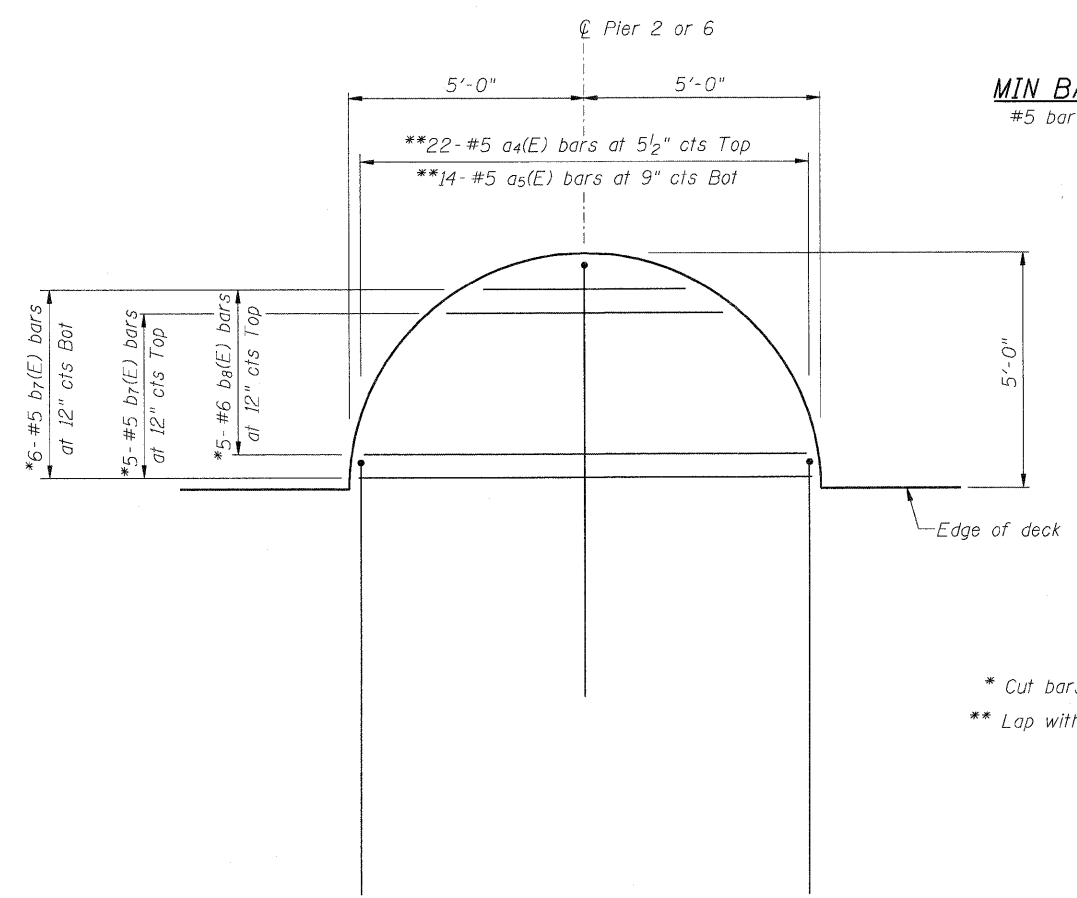


Hatched area to be poured after expansion assembly has been adjusted and superstructure forms have been removed. Quantity of concrete included with Concrete Superstructure. For reinforcement in hatched area see Sheets 67 & 68 of 103



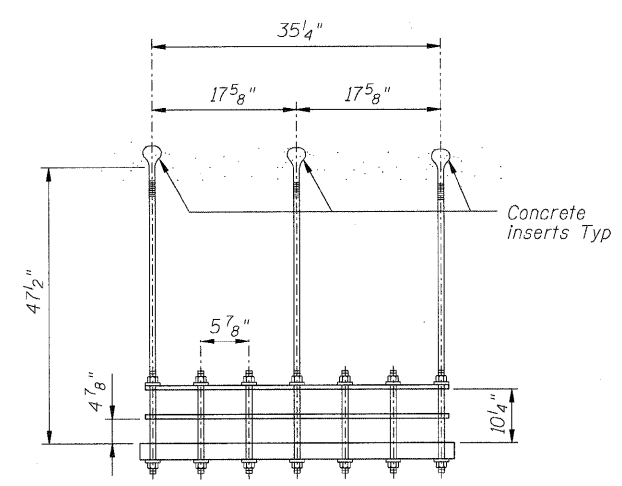
**SECTION A-A**



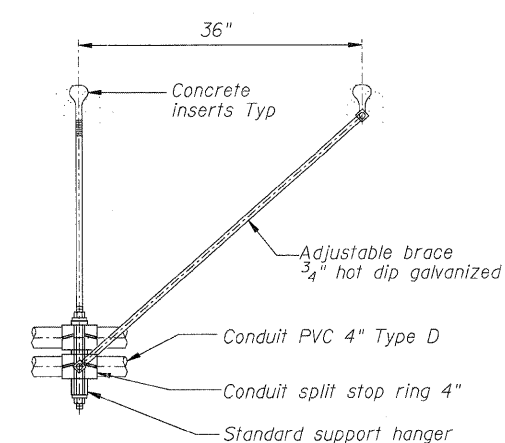
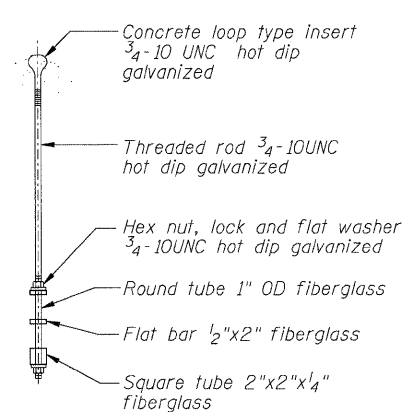
**TYPICAL SCENIC OVERLOOK DETAIL**  
(4 locations-reinforcement bars total = 2216 lb)

**MIN BAR LAP**  
#5 bar = 3'-3"

\* Cut bars to fit in field.  
\*\* Lap with corresponding a<sub>1</sub>(E) and a<sub>2</sub>(E) bars.



**STANDARD SUPPORT HANGER  
2 HIGH X 6 WIDE FIBERGLASS  
AND GALVANIZED, OPENING FOR 12 4" PVC DUCTS**  
(For Reference Only - By Others)



**STANDARD HANGER WITH BRACING  
AND PVC SPLIT STOP RINGS  
10 LOCATIONS**  
(For Reference Only - By Others)

**NOTES:**  
Utility and bracing costs shall be coordinated between the Contractor and utility company.  
Bottom of hangers shall not protrude below bottom flange.  
See Electrical Plans for 2-Conduit hanger details and quantities.

FILE NAME =	D264998-shr-superdetail4.dgn
-------------	------------------------------

USER NAME =	dwoznarski
PLOT SCALE =	1:2000' / IN.
PLOT DATE =	7/18/2011

DESIGNED -	ACB
CHECKED -	JMB
DRAWN -	RLK
CHECKED -	ACB

REVISED -	
REVISED -	
REVISED -	
REVISED -	

**STATE OF ILLINOIS  
DEPARTMENT OF TRANSPORTATION**

**SUPERSTRUCTURE DETAILS (SHEET 4 OF 5)  
STRUCTURE NO. 098-0115**  
SHEET NO. 33 OF 103 SHEETS

F.A.P. RTE.	SECTION	COUNTY	TOTAL SHEETS	SHEET NO.
646	IB-2	WHITESIDE	257	136
				CONTRACT NO. 64B80
ILLINOIS FED. AID PROJECT				