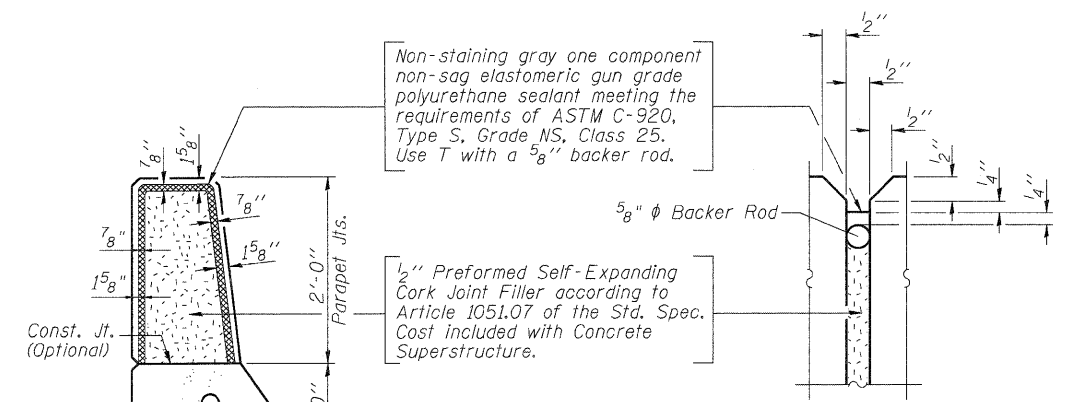


**SECTION F-F**

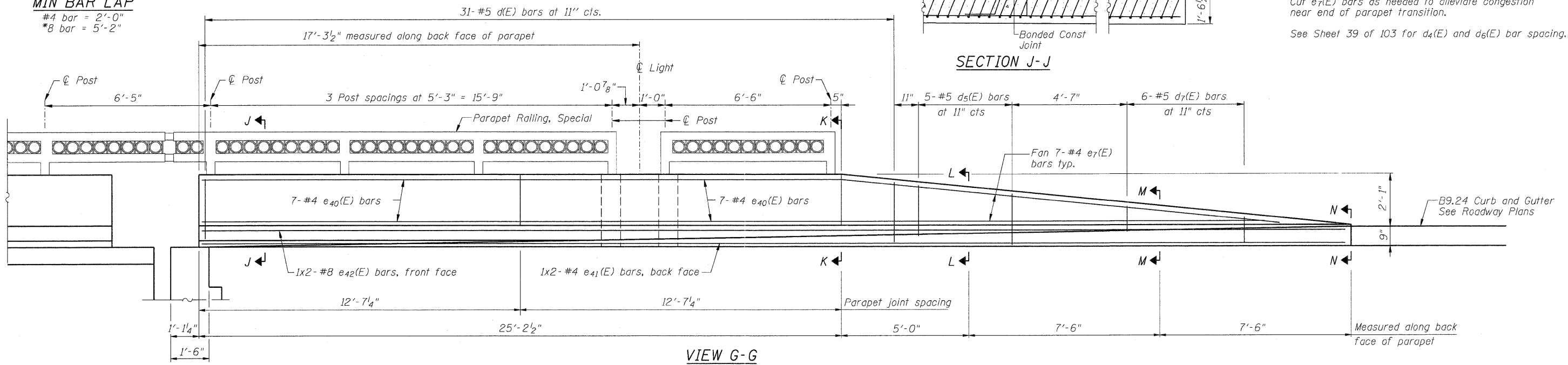
\*\*\* Cross slope and longitudinal slope transition  
 \*\* Longitudinal slope shall transition from top of curb elevation at south end of approach slab to standard section as shown in Section D-D. Cross slope shall transition from level to 1/4\"/>



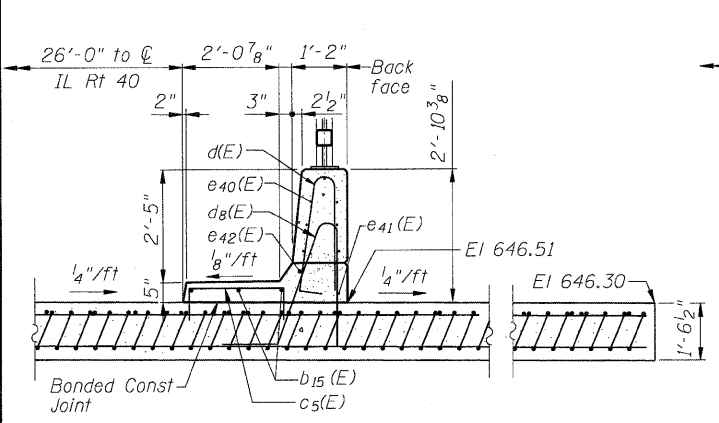
**PARAPET JOINT DETAILS**

**NOTES**  
 See Sheets 44 & 45 of 103 for railing details.  
 See Sheet 35 of 103 for steel parapet details.  
 See electrical plans for expansion fitting and conduit in parapet details.  
 Cut e7(E) bars as needed to alleviate congestion near end of parapet transition.  
 See Sheet 39 of 103 for d4(E) and d5(E) bar spacing.

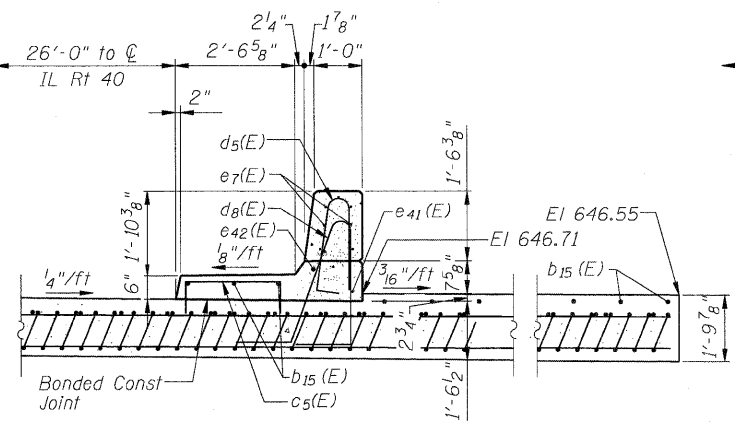
**MIN BAR LAP**  
 #4 bar = 2'-0"  
 #8 bar = 5'-2"



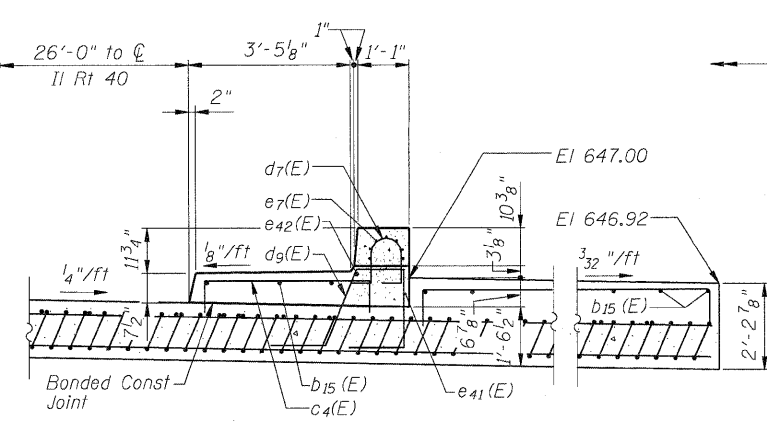
**VIEW G-G**



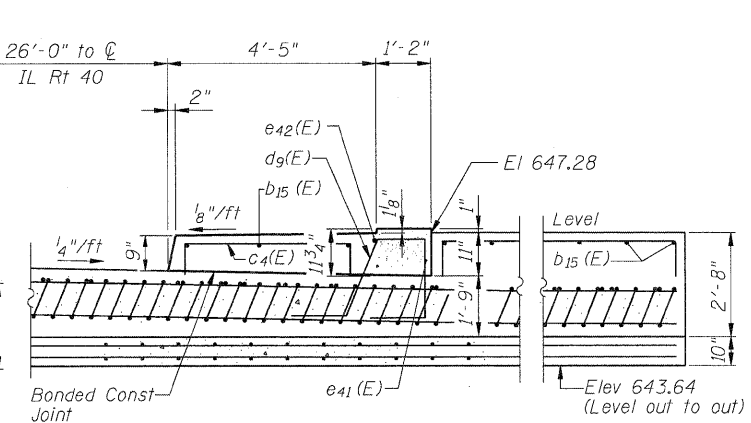
**SECTION K-K**



**SECTION L-L**



**SECTION M-M**



**SECTION N-N**

FILE NAME = D264988-sht-approach3.dgn	USER NAME = dwozmariski	DESIGNED - ACB	REVISED -	<b>STATE OF ILLINOIS DEPARTMENT OF TRANSPORTATION</b>	<b>SOUTH APPROACH SLAB DETAILS (SHEET 3 OF 4) STRUCTURE NO. 098-0115</b>	F.A.P. RTE. 646	SECTION IB-2	COUNTY WHITESIDE	TOTAL SHEETS 257	SHEET NO. 144	
PLOT SCALE = 2.0000' / IN.	DRAWN - RLK	CHECKED - JMB	REVISED -			SHEET NO. 41 OF 103 SHEETS		CONTRACT NO. 64B80 ILLINOIS FED. AID PROJECT			
PLOT DATE = 7/18/2011	CHECKED - ACB	REVISIONS	REVISIONS								