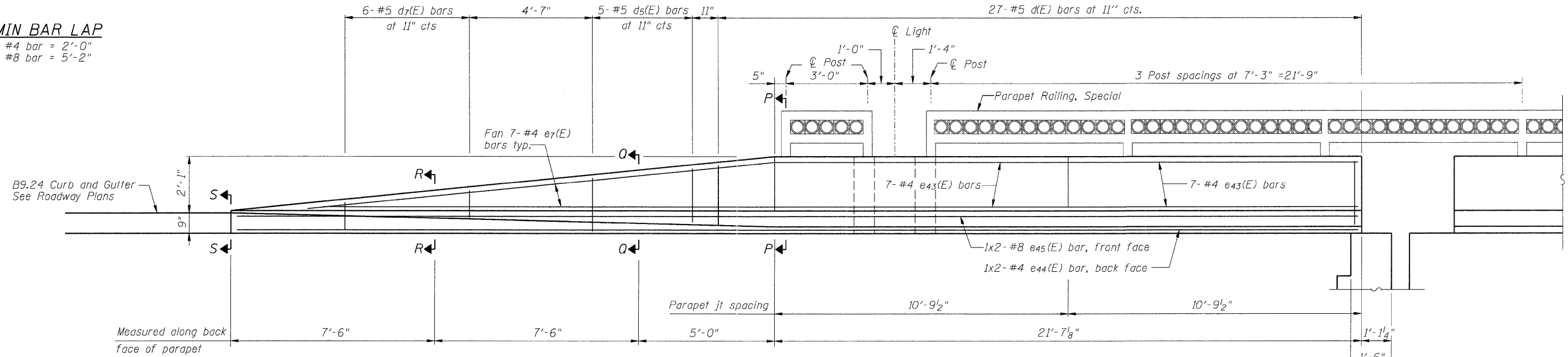
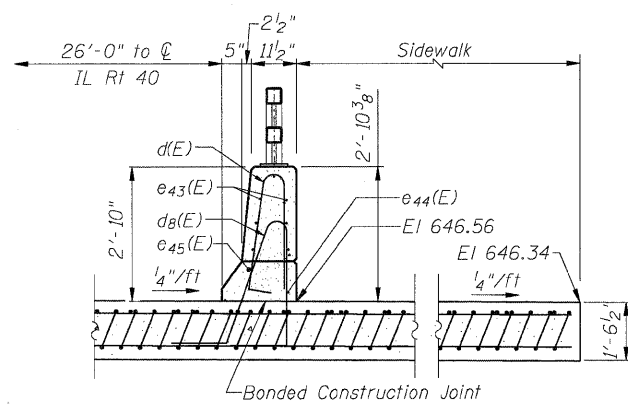


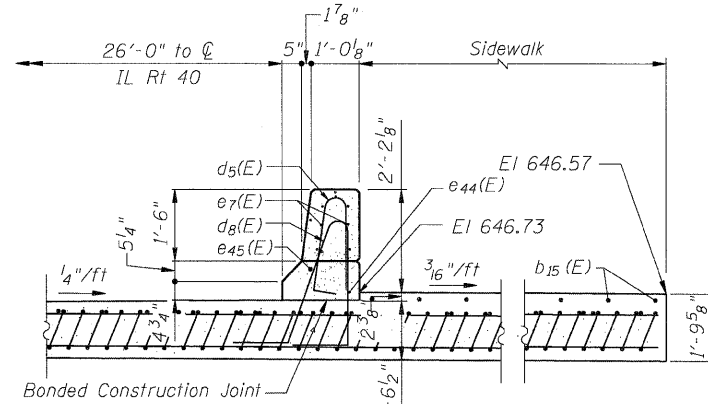
MIN BAR LAP
 #4 bar = 2'-0"
 #8 bar = 5'-2"



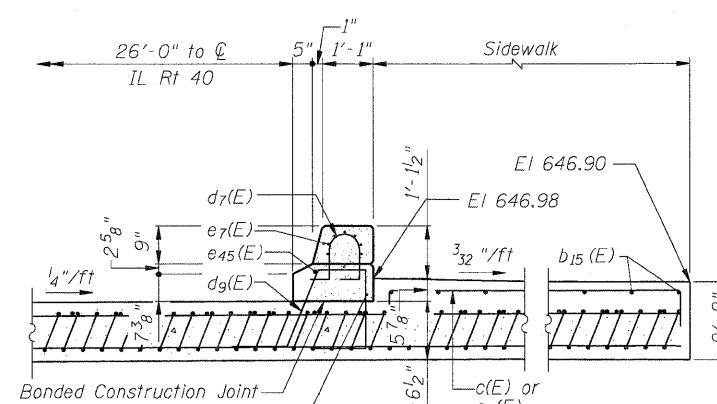
VIEW H-H



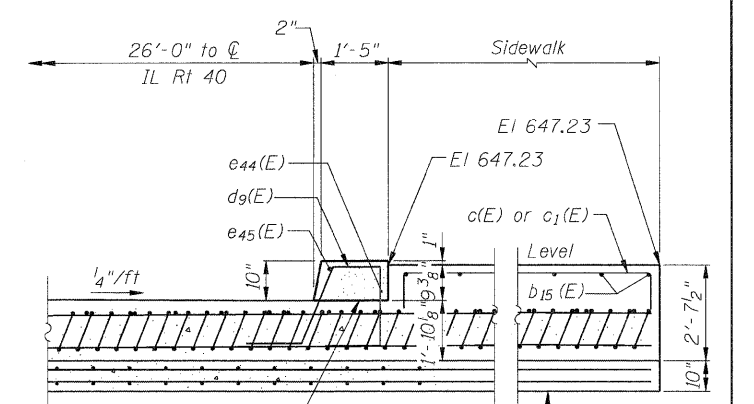
SECTION P-P



SECTION Q-Q



SECTION R-R



SECTION S-S

NOTES

- See Sheet 44 & 45 of 103 for railing details.
- See Sheet 35 of 103 for steel parapet details.
- See electrical plans for expansion fitting and conduit in parapet details.
- Cut e7(E) bars as needed to alleviate congestion near end of parapet transition.
- See Sheet 39 of 103 for d8(E) and d9(E) bar spacing.

FILE NAME = D264980-sht-sapproach4.dgn

USER NAME = dwoznarski
 PLOT SCALE = 2,0000' / IN.
 PLOT DATE = 7/18/2011

DESIGNED - ACB
 CHECKED - JMB
 DRAWN - RLK
 CHECKED - ACB

REVISED -
 REVISED -
 REVISED -
 REVISED -

**STATE OF ILLINOIS
 DEPARTMENT OF TRANSPORTATION**

**SOUTH APPROACH SLAB DETAILS (SHEET 4 OF 4)
 STRUCTURE NO. 098-0115**

SHEET NO. 42 OF 103 SHEETS

F.A.P. RTE.	SECTION	COUNTY	TOTAL SHEETS	SHEET NO.
646	IB-2	WHITESIDE	257	145
			CONTRACT NO. 64B80	
ILLINOIS FED. AID PROJECT				