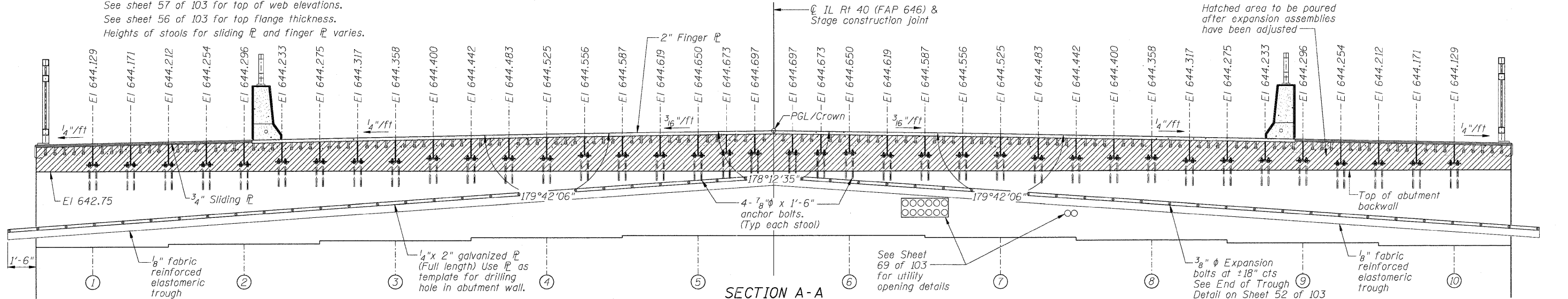


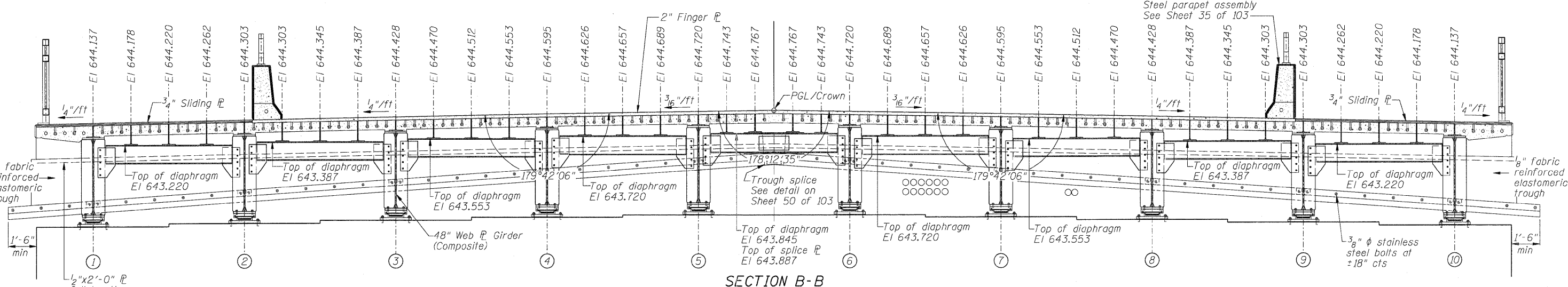
**NOTES:**

Work this sheet with sheets 50-51 of 103.  
 Elevations shown in Section A-A are taken along front face of backwall at bottom of 2" finger PL or 3/4" sliding PL.  
 Elevations shown in Section B-B are taken at CL bearing at bottom of 2" finger PL or 3/4" sliding PL.  
 All sliding PL's shall have a raised pattern.  
 See sheet 57 of 103 for top of web elevations.  
 See sheet 56 of 103 for top flange thickness.  
 Heights of stools for sliding PL and finger PL varies.

**PLAN OF FINGER PLATE EXPANSION DEVICE AT NORTH ABUTMENT**



**SECTION A-A**



**SECTION B-B**

FILE NAME = D264982-sht-fingerplnabutm.dgn	USER NAME = dwozniarski	DESIGNED - ACB	REVISD -	<b>STATE OF ILLINOIS DEPARTMENT OF TRANSPORTATION</b>	<b>FINGER PLATE EXPANSION JOINT - NORTH ABUTMENT STRUCTURE NO. 098-0115</b>	F.A.P. RTE. 646	SECTION 1B-2	COUNTY WHITESIDE	TOTAL SHEETS 257	SHEET NO. 152
PLOT SCALE = 2.6667' / IN.	CHECKED - JMB	REVISD -	CONTRACT NO. 64B80							
PLOT DATE = 7/18/2011	DRAWN - RLK	REVISD -	ILLINOIS FED. AID PROJECT							
	CHECKED - ACB	REVISD -								