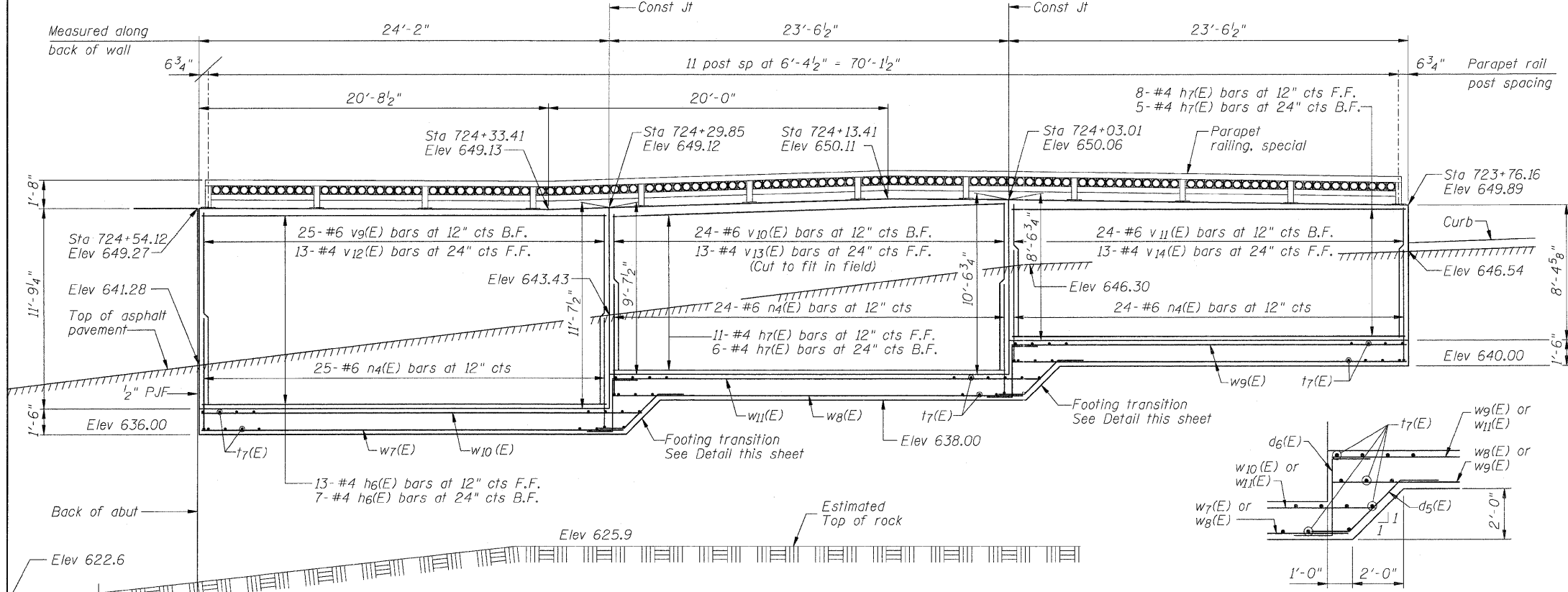
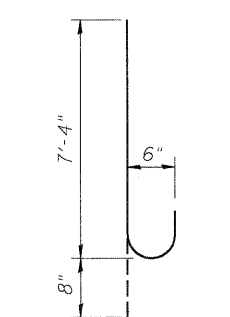
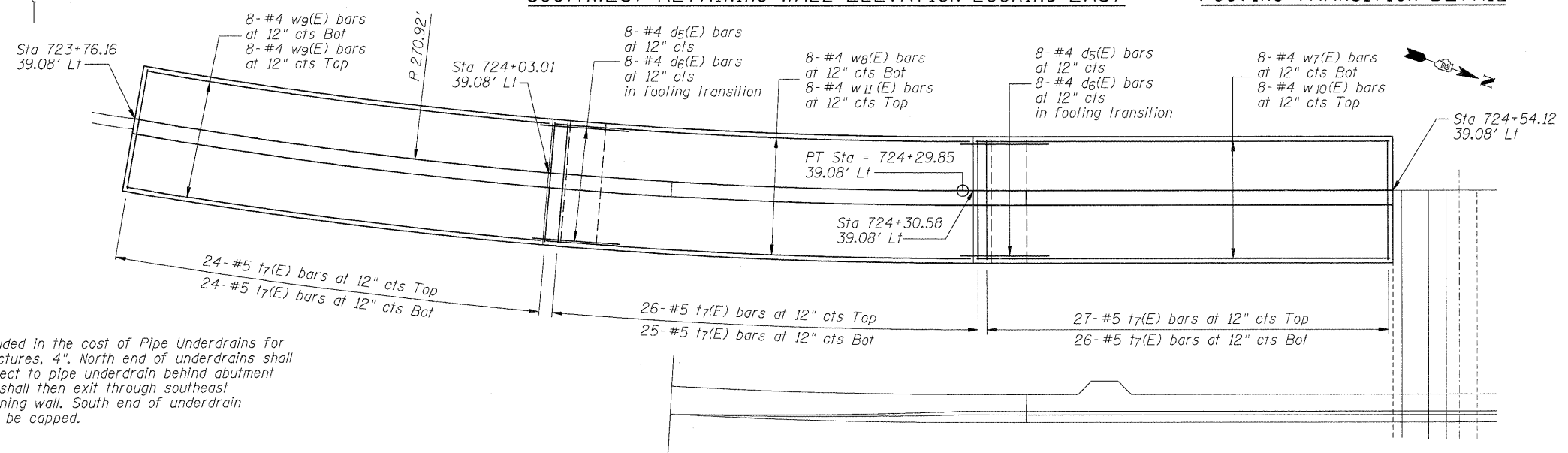
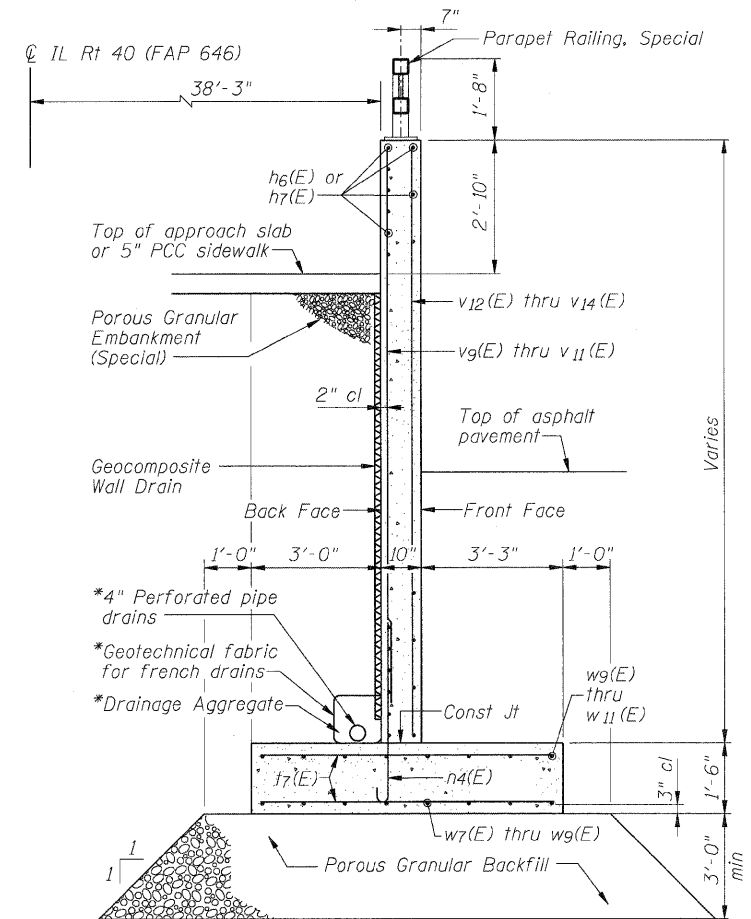


MIN BAR LAP

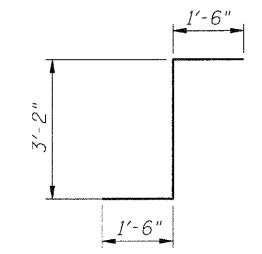
#6 bar = 3'-10"



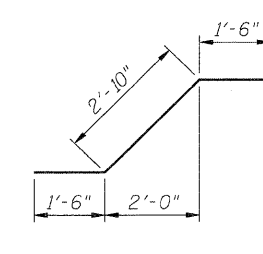
FOOTING TRANSITION DETAIL



BAR n4(E)

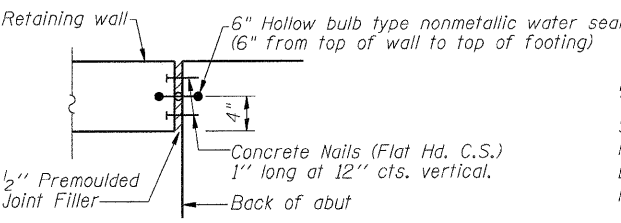


BAR d6(E)



BAR d5(E)

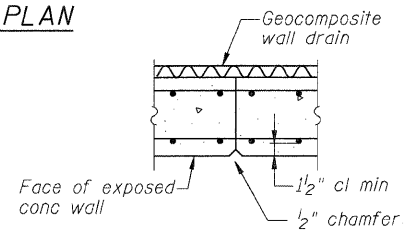
*Included in the cost of Pipe Underdrains for Structures, 4". North end of underdrains shall connect to pipe underdrain behind abutment and shall then exit through southeast retaining wall. South end of underdrain shall be capped.



CORNER DETAIL

NOTES:

See Roadway Plans for asphalt pavement details.
For Parapet Railing, Special details see sheets 44-46 of 103.
B.F. = Back Face
F.F. = Front Face



BILL OF MATERIAL

Bar	No.	Size	Length	Shape
d5(E)	16	#4	5'-10"	┌
d6(E)	16	#4	6'-2"	┌
h6(E)	20	#4	23'-10"	—
h7(E)	30	#4	23'-3"	—
n4(E)	73	#6	8'-0"	┌
t7(E)	152	#5	6'-9"	—
v9(E)	25	#6	10'-8"	—
v10(E)	24	#6	9'-3"	—
v11(E)	24	#6	7'-3"	—
v12(E)	13	#4	11'-6"	—
v13(E)	13	#4	10'-3"	—
v14(E)	13	#4	8'-1"	—
w7(E)	8	#4	25'-0"	—
w8(E)	8	#4	24'-5"	—
w9(E)	16	#4	23'-3"	—
w10(E)	8	#4	26'-1"	—
w11(E)	8	#4	25'-6"	—
Concrete Structures		Cu. Yd.	52.5	
Reinforcement Bars, Epoxy Coated		Pound	4900	
Pipe Underdrains for Structures, 4"		Foot	69	
Porous Granular Embankment (Special)		Cu. Yd.	47	
Geocomposite Wall Drain		Sq. Yd.	81	
Porous Granular Backfill		Cu. Yd.	98	