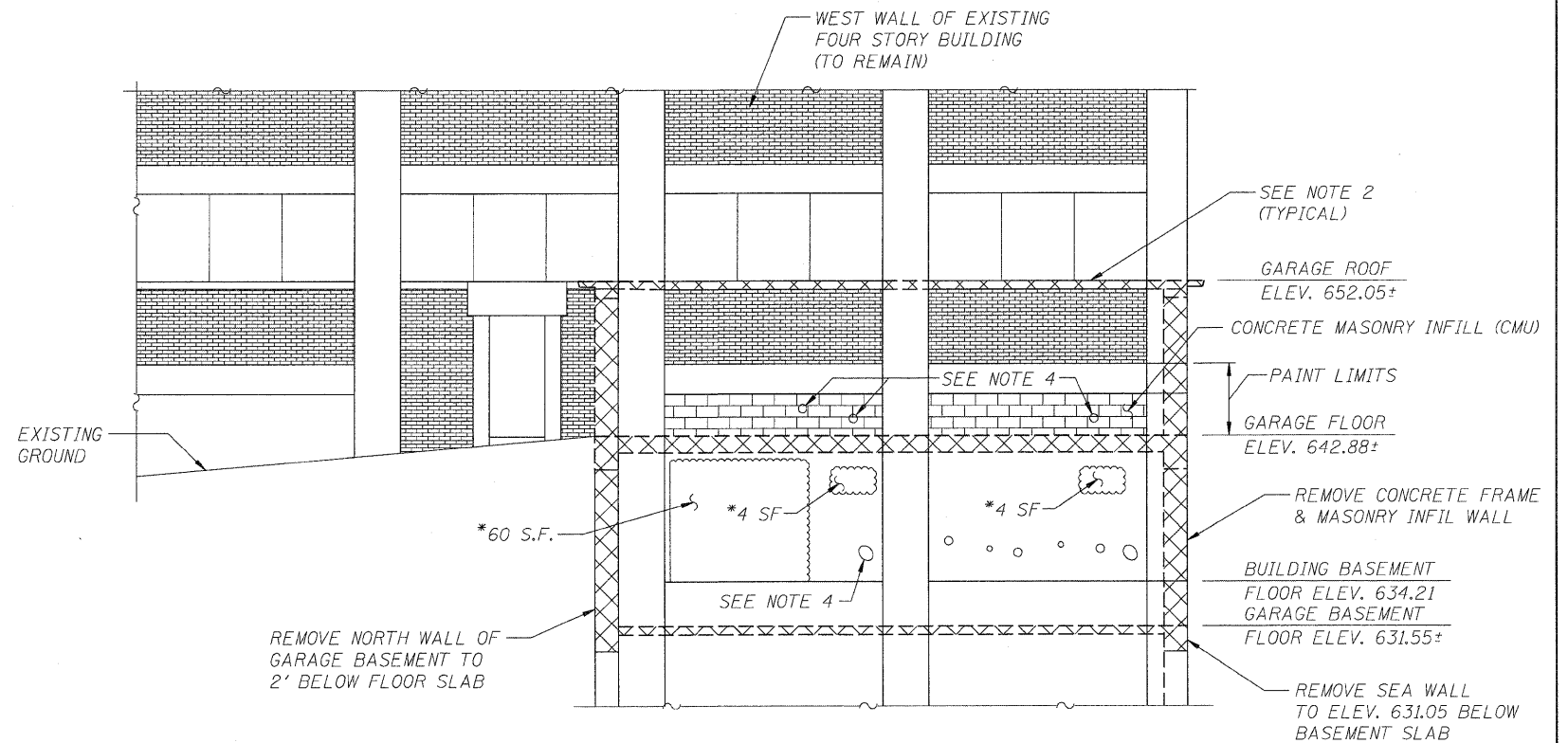
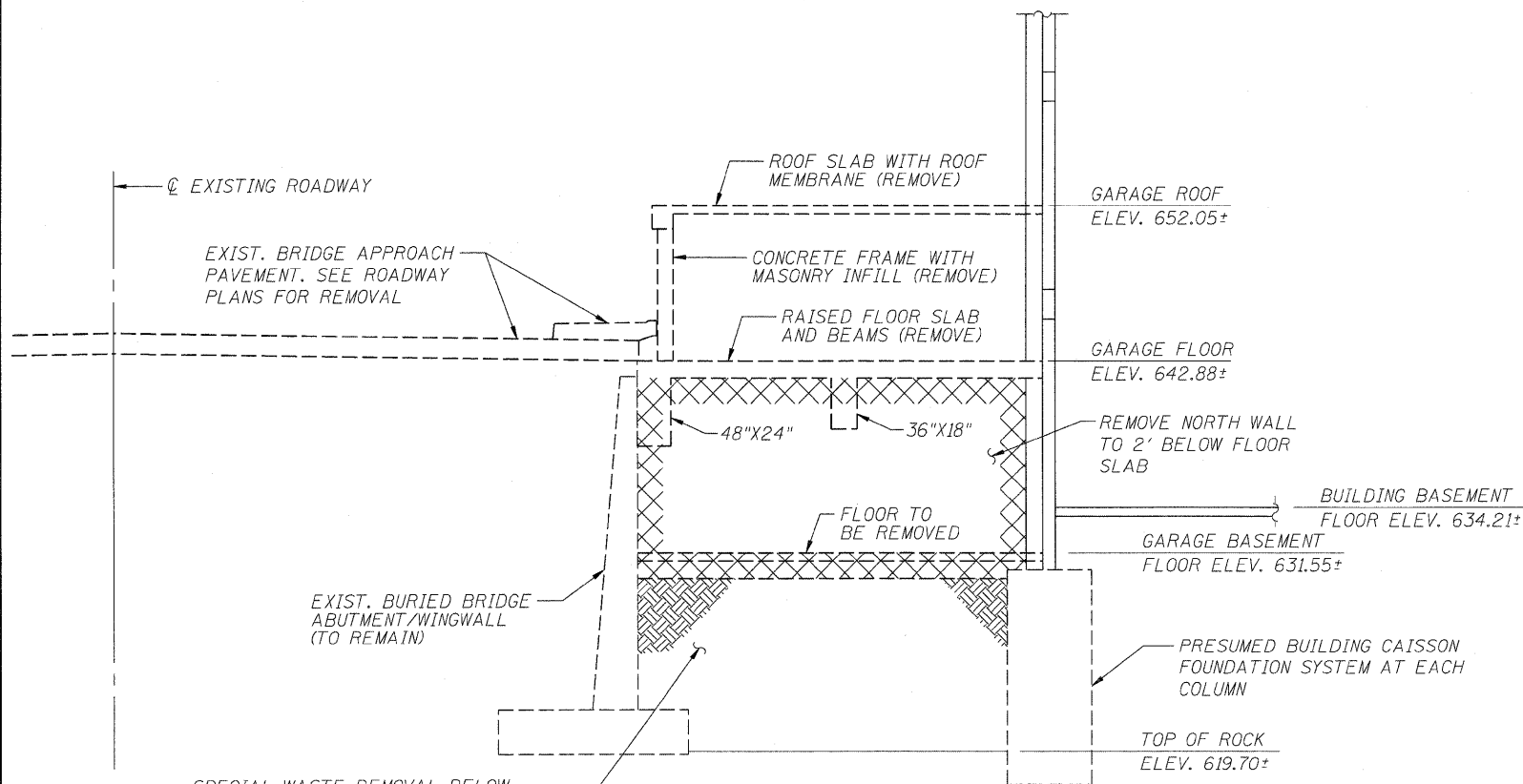


GARAGE PLAN



**ELEVATION B-B
GARAGE BASEMENT WALL**

*AREA OF CONCRETE WALL IN BASEMENT OF FOUR STORY BUILDING TO BE PATCHED (SEE NOTE #4)



**SECTION A-A
GARAGE LOOKING NORTH**

SPECIAL WASTE REMOVAL BELOW GARAGE FLOOR TO TOP OF ROCK. SEE ROADWAY PLANS FOR QUANTITY. SEE SHEET 80 OF 103 FOR TEMPORARY SOIL RETENTION SYSTEM.

BUILDING REMOVAL NOTES:

1. The work shall consist of removal of the garage structure adjacent to the north bridge abutment to the limits shown on the plans and as required to complete other scheduled work. All work including patching of structure to remain shall be paid for at the contract lump sum unit price for BUILDING REMOVAL NO. 1.
2. Removal of the concrete structure adjoining the adjacent structure to remain shall include complete removal flush with the finish surface of the structure to remain. Where concrete to be removed is monolithic with remaining structure or removal results in damage to remaining structure, the surface of the remaining structure shall be patched to provide a smooth finish surface on the remaining structure.
3. Where reinforcement encased in concrete to be removed is embedded into structure to remain, remove concrete around the embedded reinforcement and cut back reinforcement to 2 inches clear of the finish surface of the structure to remain. Patch to provide smooth surface flush with finish surface of structure to remain.
4. Patch holes in basement wall of building structure to remain as follows:
 - a. Patch holes less than 1 square foot in area using concrete or grout flush with finished surface of structure to remain.
 - b. Patch holes greater than 1 square foot as follows: Saw cut perimeter of opening to provide straight edges minimum 1 inch deep square with the concrete surface. Remove concrete around perimeter of opening between sawcuts at each face and clean surface. Supplement reinforcing bars remaining in opening with #4 bars spaced 12 inches on center each way. Drill bars in edge of opening a minimum of 8" and grout with chemical adhesive resin system. Lap reinforcement min. 12" with new and existing bars and dowels. Place formwork on each side of opening with access openings to place concrete within the forms located to the exterior of the wall. Pump or place concrete. After form removal, patch honeycombed surfaces to provide a smooth finish flush with surface of structure to remain.
5. Remove all conduits, shelves, etc, from the existing face of the structure to remain that are exposed after the garage removal.
6. Paint exterior wall of building to remain with Waterborne Acrylic paint, suitable for use on concrete surfaces, to limits shown on plans. Match color to other exposed painted surfaces on the building.
7. The Contractor shall secure a Right of Entry Permit from owner of buildings prior to start of work.

FILE NAME = D264880-sht-bldgdemo.dgn

USER NAME = dwozn1ar5k1

DESIGNED - FMC
CHECKED - MCB

REVISED -
REVISED -

PLOT SCALE = 5/8" = 1' / IN.

DRAWN - FMC/MML

REVISED -

PLOT DATE = 7/18/2011

CHECKED - MCB

REVISED -

**STATE OF ILLINOIS
DEPARTMENT OF TRANSPORTATION**

DEMOLITION PLAN (LAWRENCE)

SHEET NO. 81 OF 103 SHEETS

CB Coombe-Bloxdorf P.C.
-CIVIL ENGINEERS-
-STRUCTURAL ENGINEERS-
-LAND SURVEYERS-
Design Firm License No. 184-002703

| F.A.P. RTE. | SECTION | COUNTY | TOTAL SHEETS | SHEET NO. |
|-------------|---------|-----------|--------------------|-----------|
| 646 | 1B-2 | WHITESIDE | 257 | 184 |
| | | | CONTRACT NO. 64B80 | |

ILLINOIS FED. AID PROJECT