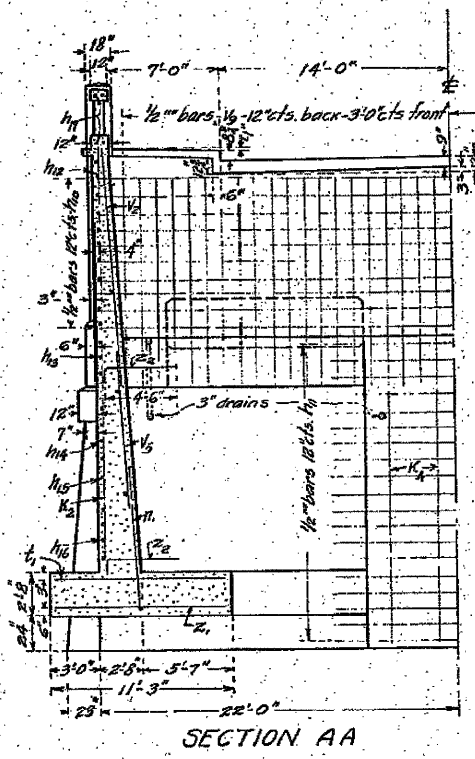
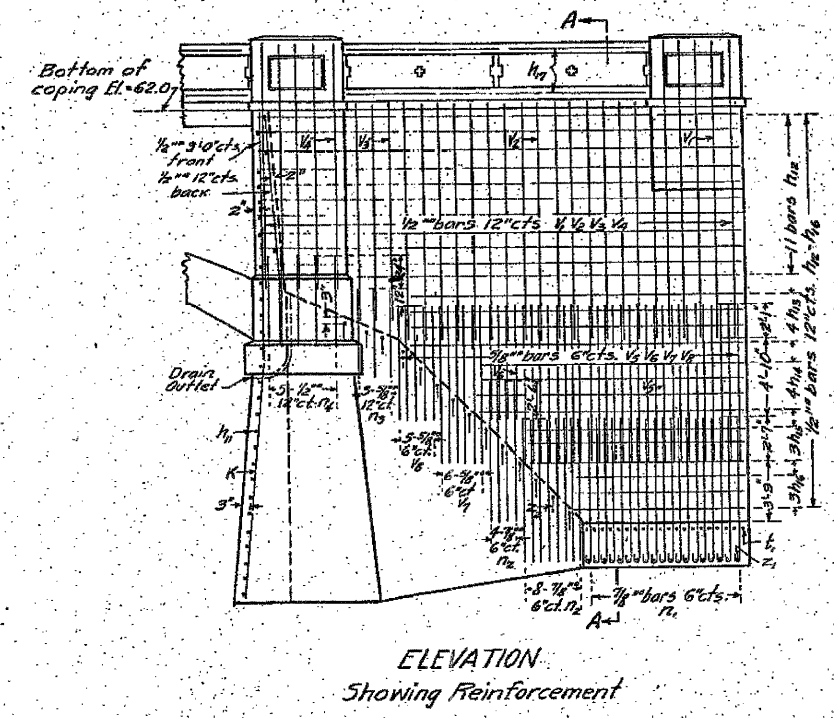


STATE OF ILLINOIS  
DEPARTMENT OF PUBLIC WORKS & BUILDINGS  
DIVISION OF HIGHWAYS

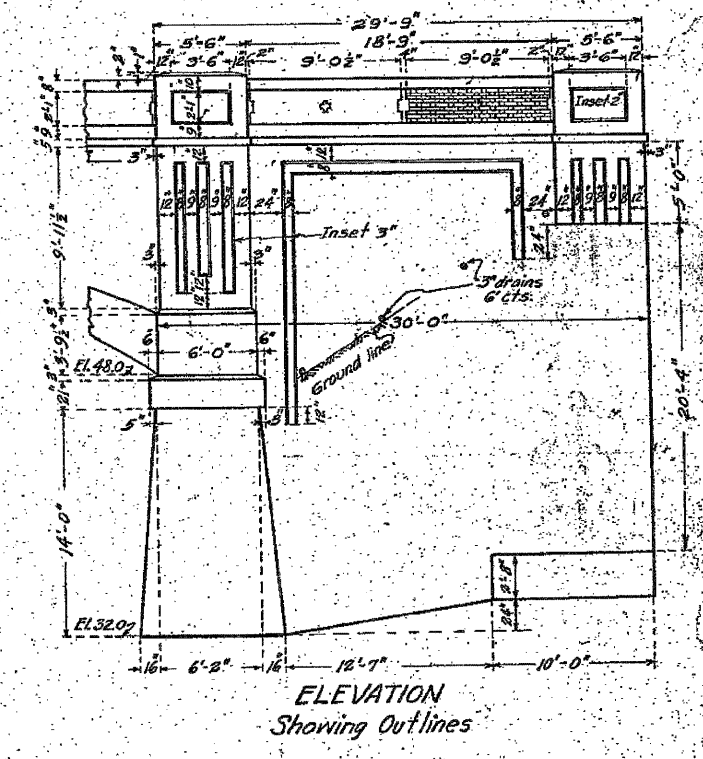
FOR INFORMATION ONLY



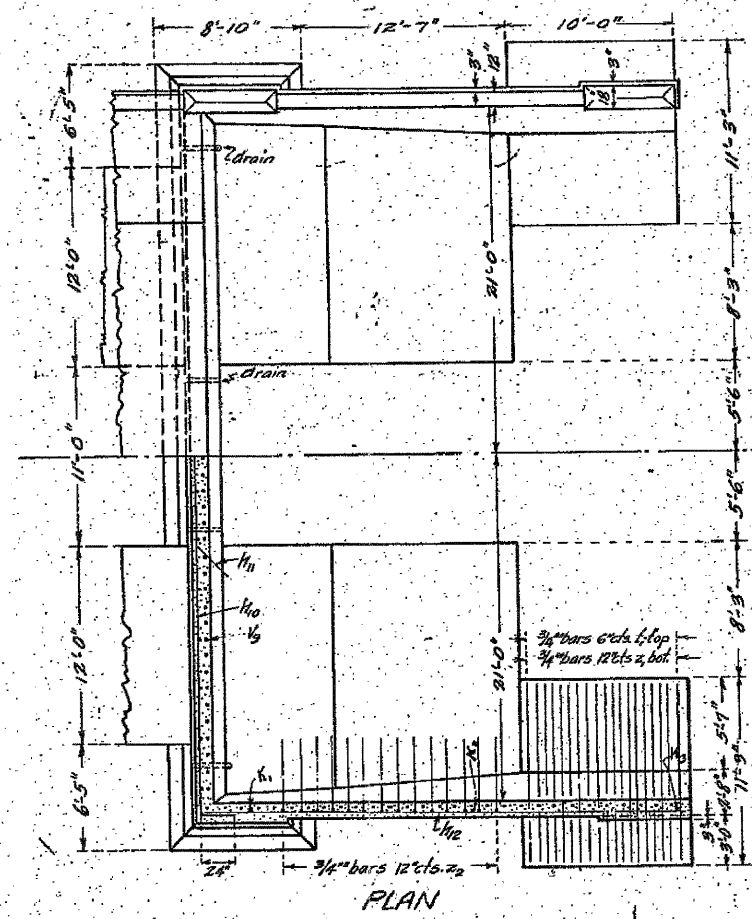
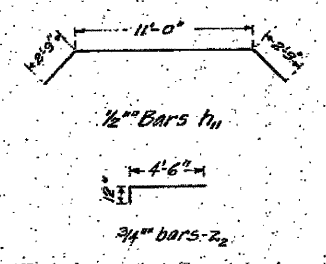
SECTION AA  
All footings to extend into rock.



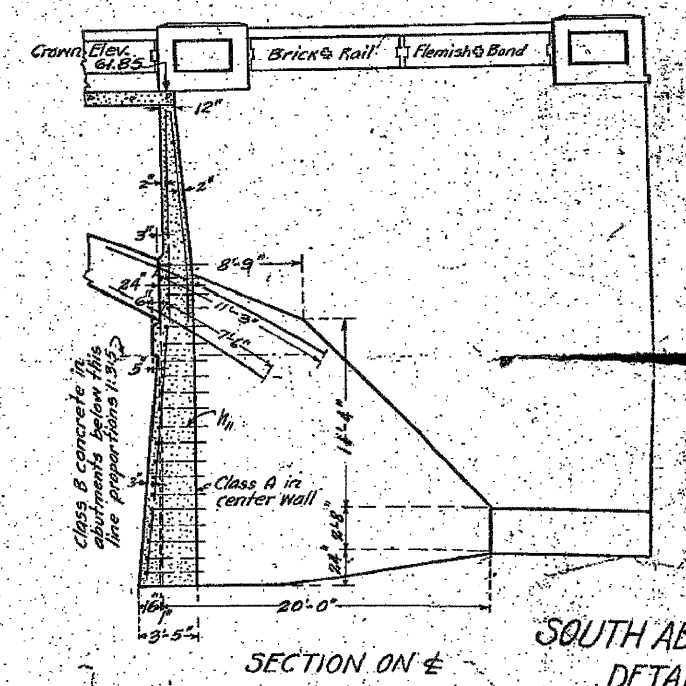
ELEVATION  
Showing Reinforcement



ELEVATION  
Showing Outlines



PLAN



Class A concrete to be used throughout (proportions 1:2 1/2:4) except in abutments below coping as shown.

SECTION ON E  
SOUTH ABUTMENT  
DETAILS

COMPUTED	W.N. Schroeder
CHECKED	R.H. Murphy
DRAWN	W.N.S.
CHECKED	R.H.M.
SPECIAL	ASS. MBL.
CHECKED	

EXAMINED  
PAUSED  
APPROVED  
BRIDGE ENGINEER  
ENGINEER OF DESIGN  
CHIEF HIGHWAY ENGINEER

OK as revised  
Jan. 16, 1923  
A.F. Burel

PLAN  
NO.  
35.14.28-2  
MAY 18  
1922