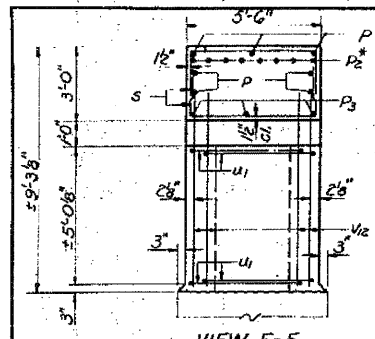


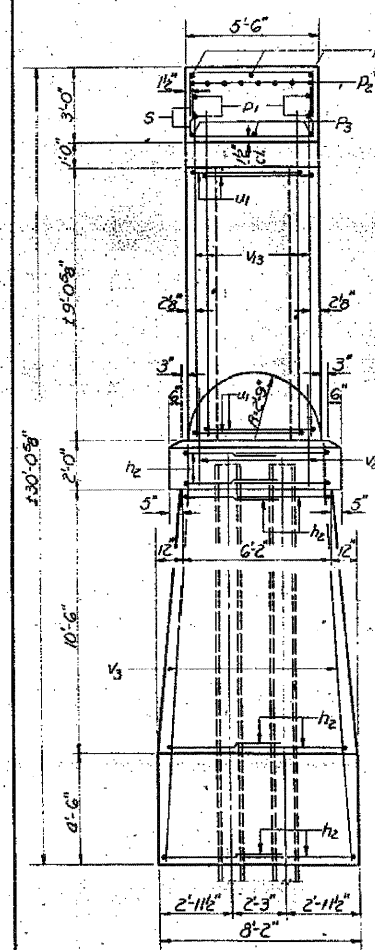
STATE OF ILLINOIS  
DEPARTMENT OF TRANSPORTATION

Sta. 15+85.40

PROJECT NO.	646	SECTION	18A-1	SHEET	64	OF	43
SHEET NO. 22							
26 SHEETS							



VIEW F-F

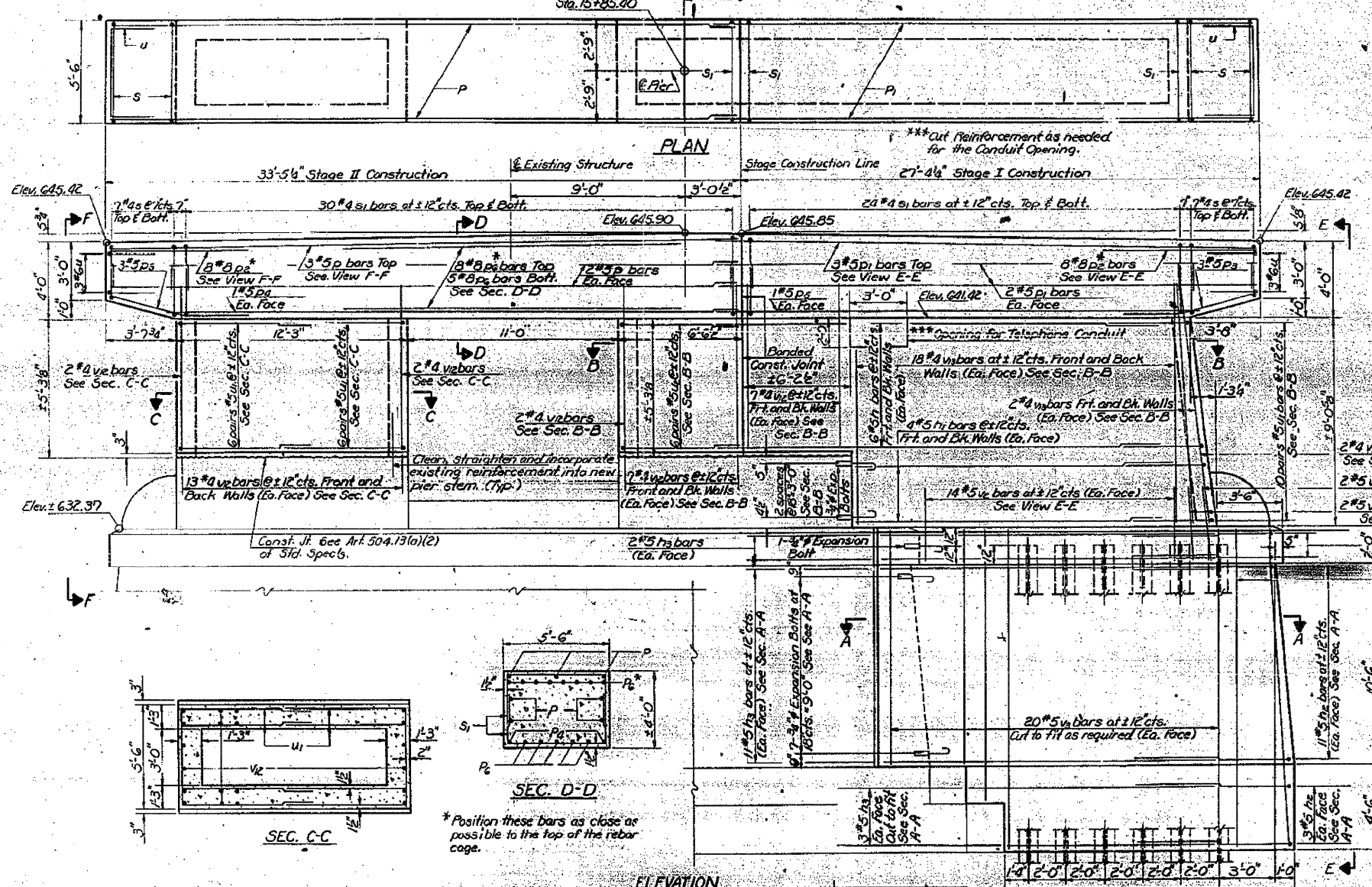


VIEW E-E

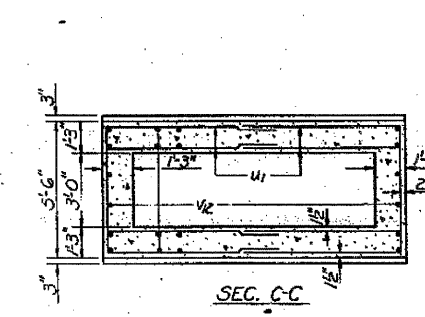
**PILE DATA**  
Type: Steel HP 12x74  
Capacity: Drives to Refusal  
Est. Length: 17'  
No. Req'd: 6

DESIGNED DAN KRULL  
CHECKED M.J. Ryan  
DRAWN Joe Sutherland  
CHECKED MGR

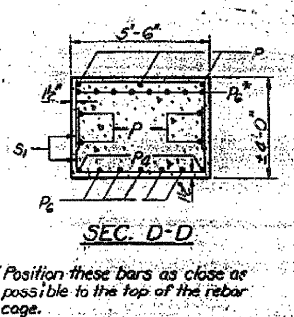
EXAMINED  
PASSED  
APPROVED



PLAN

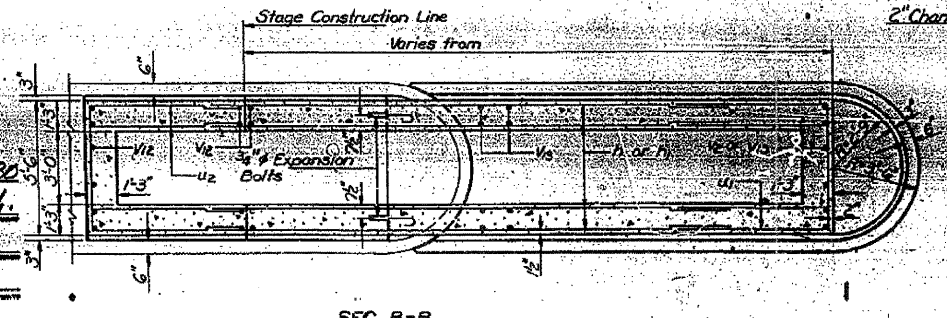


SEC. C-C

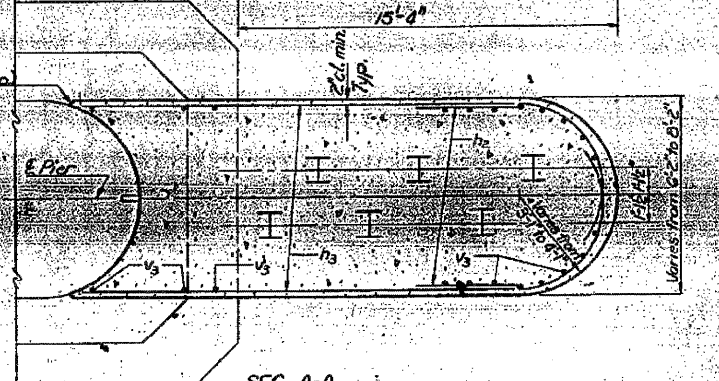


SEC. D-D

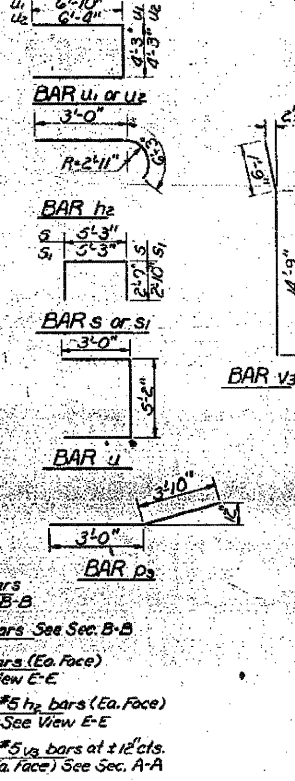
\* Position these bars as close as possible to the top of the rebar cage.



SEC. B-B



SEC. A-A



BILL OF MATERIAL

Bar No.	Size	Length	Shape
h	24	75	21'-4"
h1	16	75	14'-0"
h2	32	75	9'-3"
h3	32	75	18'-9"
p	7	75	33'-3"
p1	7	75	28'-0"
p2	16	78	7'-4"
p3	6	75	6'-10"
p4	2	75	29'-8"
p5	2	75	25'-1"
p6	13	78	18'-6"
s	28	74	10'-5"
s1	108	74	10'-11"
u	6	76	11'-2"
u1	44	75	17'-11"
u2	12	75	16'-11"
u3	34	75	3'-6"
u4	52	75	16'-6"
u5	118	74	2'-7"
u6	82	74	10'-3"
Reinforcement Bars Round 1/2" Dia.			
Close Fit Concrete 10'-11" Dia.			
Expansion Bolts 1/2" Dia.			
Steel Piles HP 12x74 Length 17' Dia.			
Cofferdam Each			

PIER # 2  
FA. RT. 646 SEC. 18A-1  
WHITESIDE COUNTY  
STATION 14+240