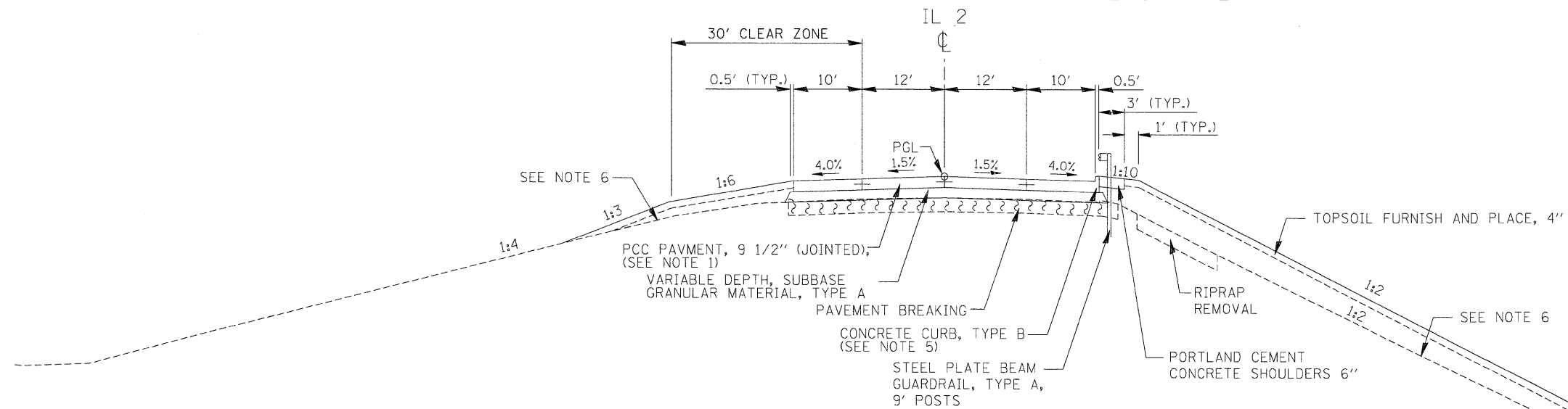


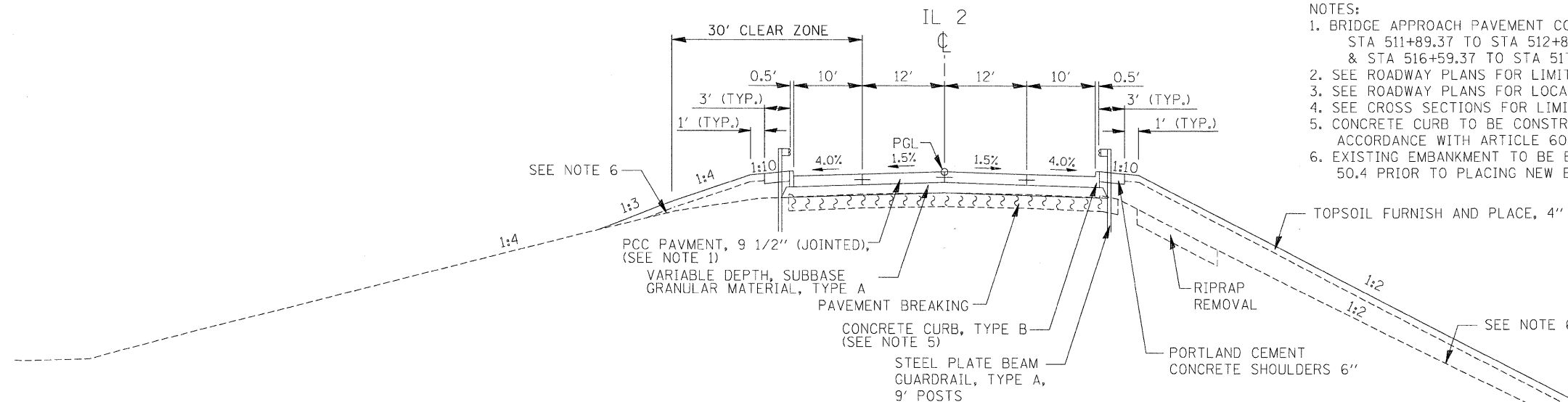
# TYPICAL SECTIONS



TYPICAL SECTION  
STA. 509+91.93 TO STA. 511+11.23

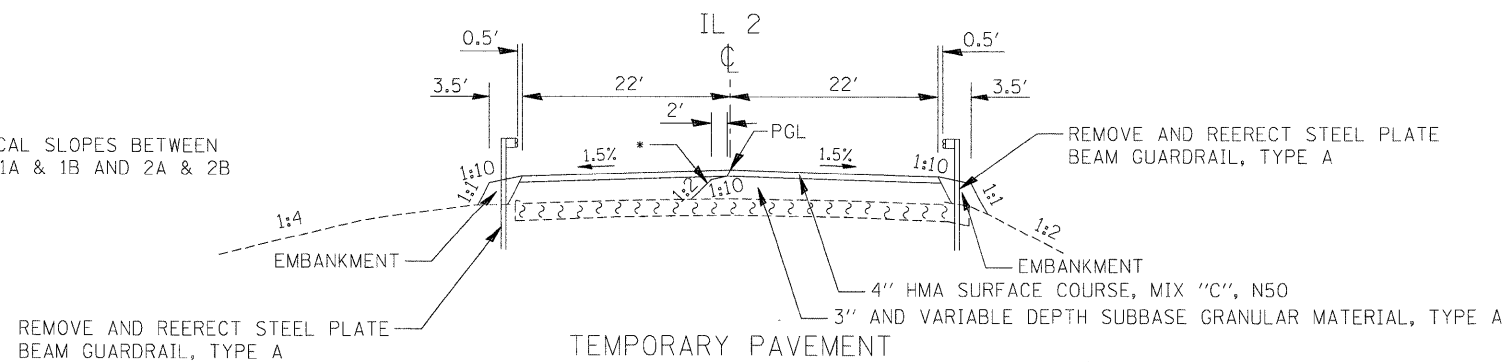
NOTES:

- BRIDGE APPROACH PAVEMENT CONECTOR (PCC) STA 511+89.37 TO STA 512+89.37 & STA 516+59.37 TO STA 517+59.37
- SEE ROADWAY PLANS FOR LIMITS OF GUARDRAIL REMOVAL
- SEE ROADWAY PLANS FOR LOCATIONS OF PROPOSED GUARDRAIL AND TERMINALS
- SEE CROSS SECTIONS FOR LIMITS OF TOPSOIL FURNISH AND PLACE, 4"
- CONCRETE CURB TO BE CONSTRUCTED MONOLITHICALLY WITH PCC SHOULDER IN ACCORDANCE WITH ARTICLE 606.07 OF THE STANDARD SPECIFICATIONS
- EXISTING EMBANKMENT TO BE BENCHED PER DISTRICT STANDARD 50.4 PRIOR TO PLACING NEW EMBANKMENT.



TYPICAL SECTION  
STA. 511+11.23 TO STA. 512+89.37

\* TYPICAL SLOPES BETWEEN STAGES 1A & 1B AND 2A & 2B



TEMPORARY PAVEMENT  
TYPICAL SECTION  
STAGE 1 STA. 515+77.06 TO STA. 517+86.43  
STAGE 2 STA. 510+52.01 TO STA. 513+46.58

FILE NAME =	USER NAME = _USER_	DESIGNED - CGC	REVISED -	<b>STATE OF ILLINOIS DEPARTMENT OF TRANSPORTATION</b>	<b>IL 2 OVER THE BNSF RAILROAD TYPICAL SECTIONS</b>	F.A.P. RTE.	SECTION	COUNTY	TOTAL SHEETS	SHEET NO.
c:\5015-phase1-il-2&1-26\civil\1-2\CADD	Sheets\0264016-sh-typical.dgn	DRAWN - CGC	REVISED -			742	38VBR-1	OGLE	87	9
PLOT SCALE = #SCALE#	CHECKED - AKK	REVISED -	REVISED -			CONTRACT NO. 64D16				
PLOT DATE = 8/18/2011	DATE - 8/2/2011	REVISED -	REVISED -			SCALE: N.T.S.	SHEET NO. 9 OF 87 SHEETS	STA. 512+89.37 TO STA. 520+50	FED. ROAD DIST. NO.	ILLINOIS FED. AID PROJECT