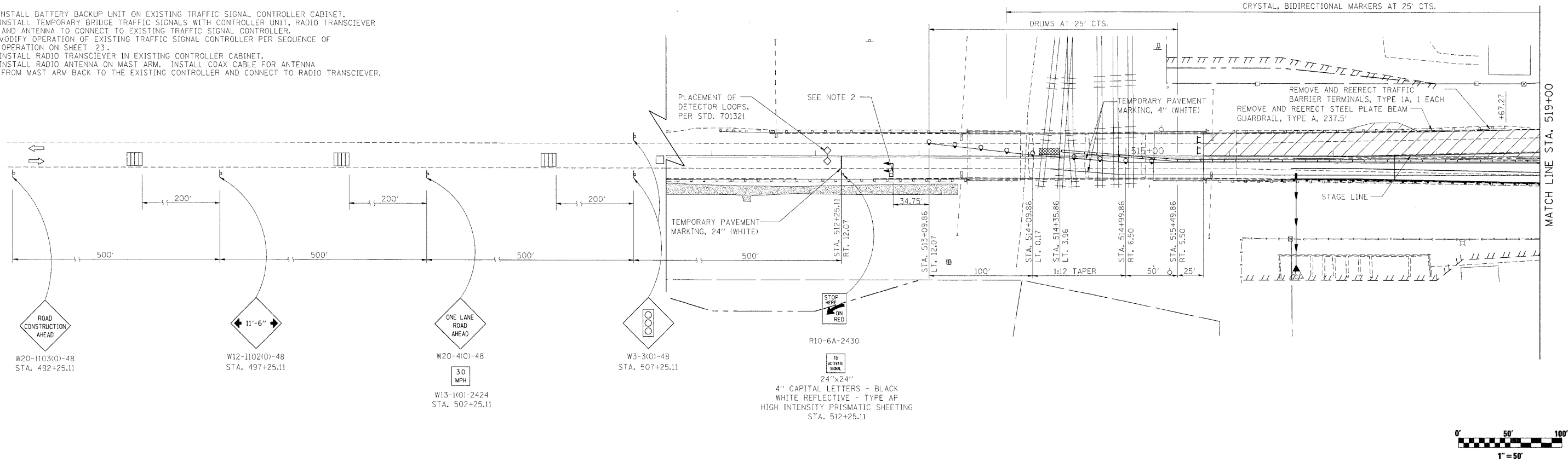


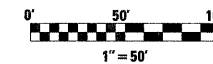
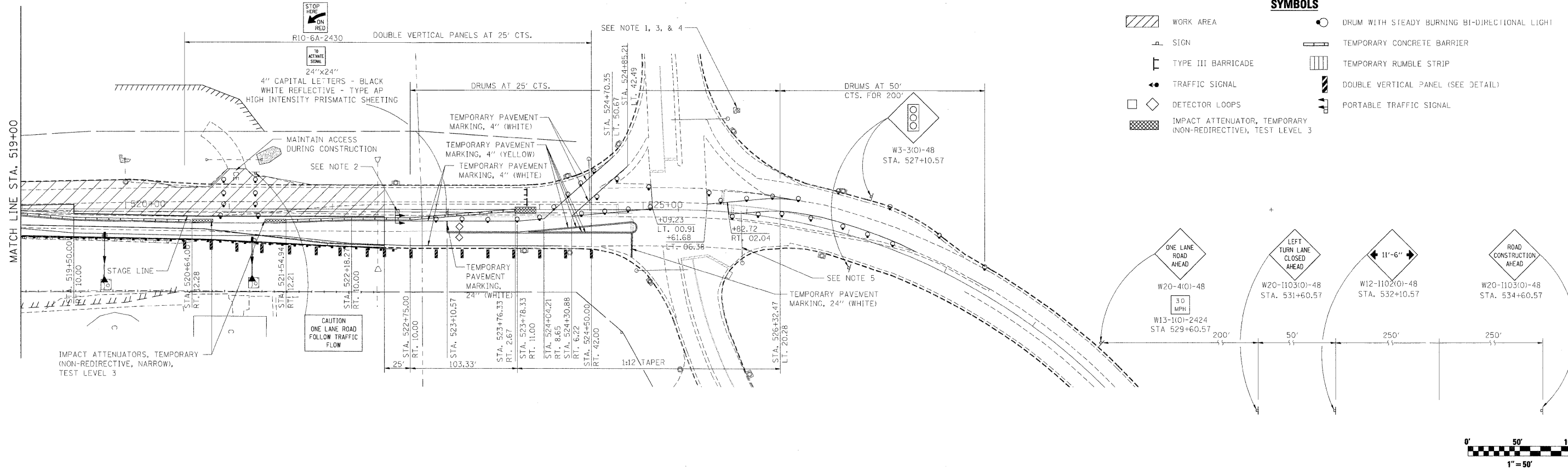
NOTE:

1. INSTALL BATTERY BACKUP UNIT ON EXISTING TRAFFIC SIGNAL CONTROLLER CABINET.
2. INSTALL TEMPORARY BRIDGE TRAFFIC SIGNALS WITH CONTROLLER UNIT, RADIO TRANSCIEVER AND ANTENNA TO CONNECT TO EXISTING TRAFFIC SIGNAL CONTROLLER.
3. MODIFY OPERATION OF EXISTING TRAFFIC SIGNAL CONTROLLER PER SEQUENCE OF OPERATION ON SHEET 23.
4. INSTALL RADIO TRANSCIEVER IN EXISTING CONTROLLER CABINET.
5. INSTALL RADIO ANTENNA ON MAST ARM. INSTALL COAX CABLE FOR ANTENNA FROM MAST ARM BACK TO THE EXISTING CONTROLLER AND CONNECT TO RADIO TRANSCIEVER.



SYMBOLS

- WORK AREA
- SIGN
- TYPE III BARRICADE
- TRAFFIC SIGNAL
- DETECTOR LOOPS
- IMPACT ATTENUATOR, TEMPORARY (NON-REDIRECTIVE), TEST LEVEL 3
- DRUM WITH STEADY BURNING BI-DIRECTIONAL LIGHT
- TEMPORARY CONCRETE BARRIER
- TEMPORARY RUMBLE STRIP
- DOUBLE VERTICAL PANEL (SEE DETAIL)
- PORTABLE TRAFFIC SIGNAL



FILE NAME = t:\5015-phase1\1-28\1-26\civil\IL-2\CAOD	USER NAME = _USER_ Sheets\0264016-sh1-MDT Stage 1B.dgn	DESIGNED - MTM DRAWN - MTM	REVISED - REVISED - REVISED -	STATE OF ILLINOIS DEPARTMENT OF TRANSPORTATION	IL-2 OVER THE BNSF RAILROAD MAINTENANCE OF TRAFFIC - STAGE 1B	F.A.P. RTE. 742	SECTION 38VBR-1	COUNTY OGLE	TOTAL SHEETS 87	SHEET NO. 24	CONTRACT NO. 64D16 ILLINOIS FED. AID PROJECT
PLOT SCALE = #SCALE#	CHECKED - KK DATE - 8/2/2011	REVISI	SCALE: 1"=50'			SHEET NO. 24 OF 87 SHEETS	STA. 507+50 TO STA. 511+00				