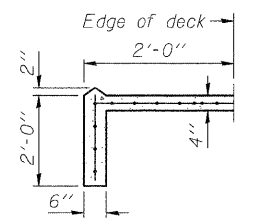
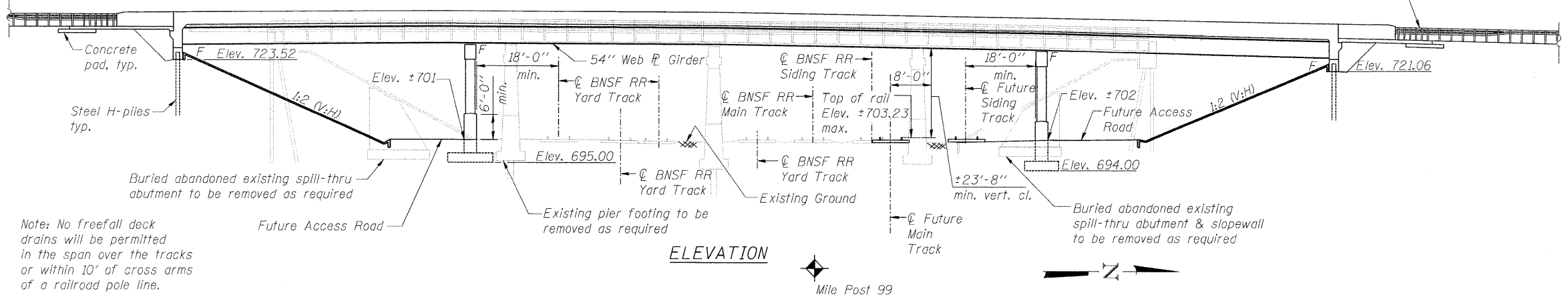


Benchmark: 401: Sign Benchtie (Approx. Shot) at Sta. 497+66.97, 64.52 Rt. 402: Chiseled "□" on concrete foundation at S. Abut. at Sta. 513+46.51, 23.26 Lt. 404: Chiseled "□" on mast arm of cantilever traffic sign at Sta. 524+94.76, 57.62 Rt.
 Existing Structure:
 S.N. 071-0026, originally constructed in 1928 under SBI 2, Section 38V at Station 8+25, using reinforced concrete tee-beams, 4" wearing surface, spill-thru abutments and multi-column piers founded on spread footings.
 Reconstructed in 1979 under F.A. Route 742, Section 38VB-1 with the placement of new PPC Deck Beams and a bituminous concrete wearing surface. Stub abutments were constructed and existing piers were widened, both founded on metal shell concrete piles. Rehabilitated in 1996 under Section 38VB-1-M with the replacement of the bituminous wearing surface with a 5" concrete overlay. 231'-6 1/2" bk. to bk. abutments, 45'-0" out-to-out deck, no skew.
 One lane of traffic shall be maintained during staged construction.
 No salvage.

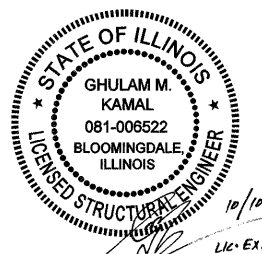
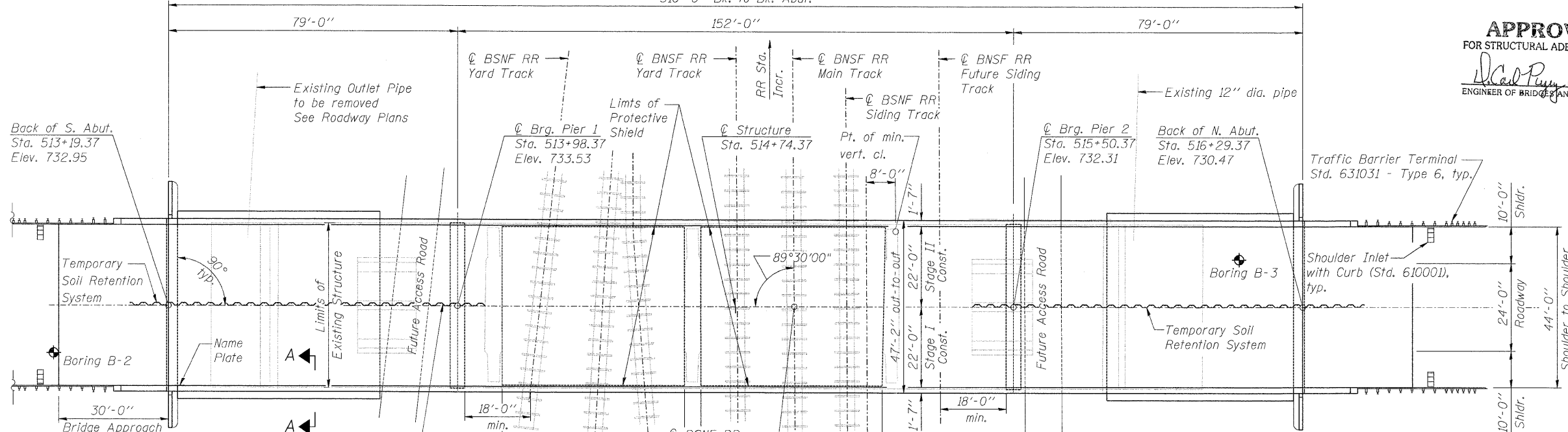
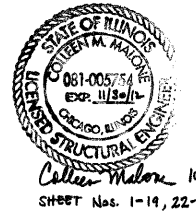
STATION 514+74.37
 BUILT 201 BY
 STATE OF ILLINOIS
 F.A.P. RT. 742 - SEC. 38VBR-1
 LOADING HL-93
 STRUCTURE NO. 071-0097

NAME PLATE
 See Std. 515001

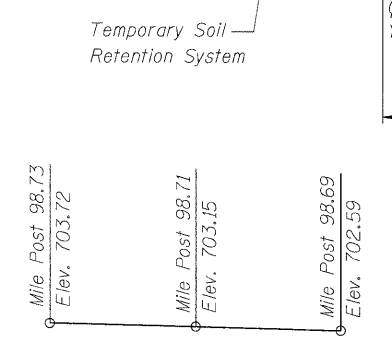
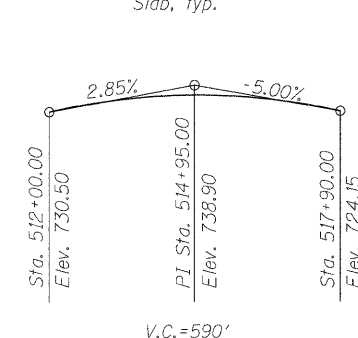


SECTION A-A

APPROVED
 FOR STRUCTURAL ADEQUACY ONLY
 [Signature]
 ENGINEER OF BRIDGES AND STRUCTURES



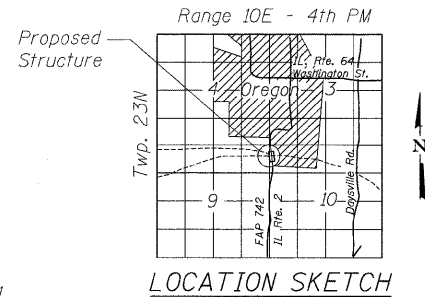
Sheet Nos. 20 and 21
GENERAL PLAN AND ELEVATION
ILLINOIS ROUTE 2 OVER
BNSF RAILROAD
F.A.P. RT. 742 - SEC. 38VBR-1
OGLE COUNTY
STATION 514+74.37
STRUCTURE NO. 071-0097



* See Special Provision for Structural Steel for Bridges

DESIGN STRESSES
FIELD UNITS
 f'c = 3,500 psi
 fy = 60,000 psi (Reinforcement)
 fy = 50,000 psi (Grade 50*)
 fy = 36,000 psi (M270 Grade 36)

SEISMIC DATA
 Seismic Performance Zone (SPZ) = 1
 Design Spectral Acceleration at 1.0 sec. (S_{D1}) = 0.059g
 Design Spectral Acceleration at 0.2 sec. (S_{D5}) = 0.105g
 Soil Site Class = C



LOADING HL-93
 Allow 50#/sq. ft. for Future Wearing Surface
DESIGN SPECIFICATIONS
 2010 AASHTO LRFD Bridge Design Specifications

LOCHNER
 H.W. LOCHNER, INC.
 CONSULTING ENGINEERS AND PLANNERS
 20 N. WACKER DRIVE, SUITE 1200
 CHICAGO, ILLINOIS 60606

USER NAME =	DESIGNED - CWS	REVISED -
FILE NAME = 0710097-64D16-001-GPE.dgn	CHECKED - CMM	REVISED -
PLOT SCALE =	DRAWN - JSD/EF	REVISED -
PLOT DATE =	CHECKED - BJN/RH	REVISED -

STATE OF ILLINOIS
DEPARTMENT OF TRANSPORTATION

F.A.P. RTE. 742	SECTION 38VBR-1	COUNTY OGLE	TOTAL SHEETS 87	SHEET NO. 62
CONTRACT NO. 64D16				
ILLINOIS FED. AID PROJECT				