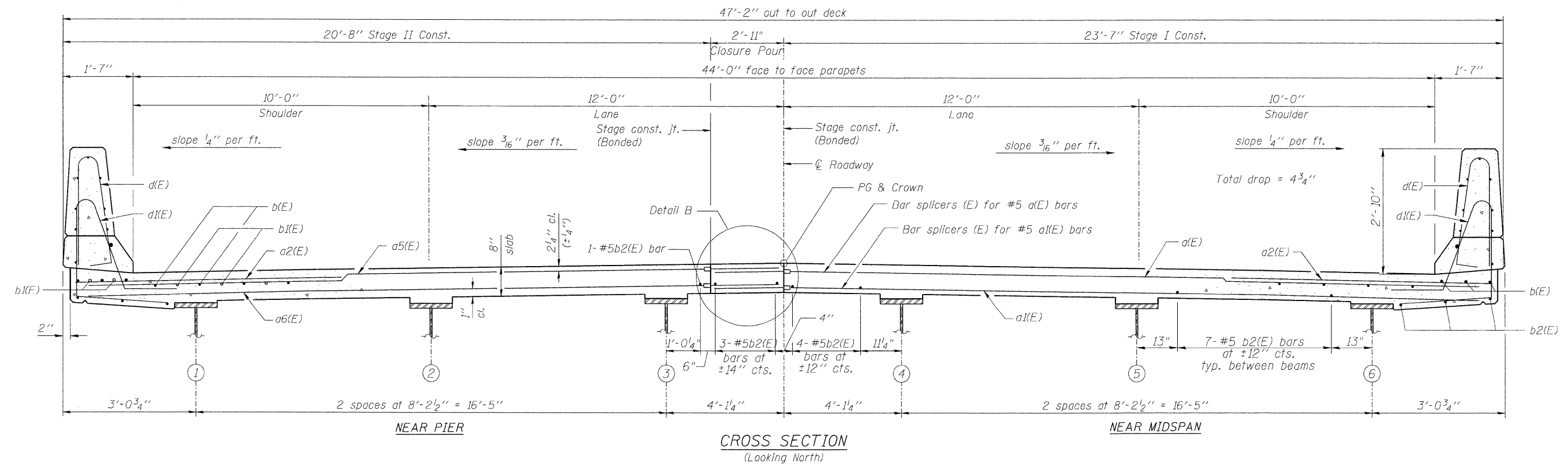


MINIMUM BAR LAP
(Slab)

#5 bar = 3'-3"
#6 bar = 3'-10"

- NOTES**
1. See Sheet 12 of 26 for superstructure details and Bill of Material.
 2. Bars indicated thus 20 x 3-#5 etc. indicates 20 lines of bars with 3 lengths per line.
 3. See Sheet 12 of 26 for parapet reinforcement.
 4. See Sheet 11 of 26 for Section A-A.
 5. For Detail B see Sheet 11 of 26.



I:\5015-Phase1\11-28\11-26\Struct\vdgn\11-26\0710097-64D16-010-DP1.dgn

LOCHNER H.W. LOCHNER, INC. CONSULTING ENGINEERS AND PLANNERS 20 N. WACKER DRIVE, SUITE 1200 CHICAGO, ILLINOIS 60606	USER NAME =	DESIGNED - GWS	REVISED -	STATE OF ILLINOIS DEPARTMENT OF TRANSPORTATION	DECK PLAN & CROSS SECTION STRUCTURE NO. 071-0097 SHEET NO. 10 OF 26 SHEETS	F.A.P. RTE.	SECTION	COUNTY	TOTAL SHEETS	SHEET NO.
	FILE NAME = 0710097-64D16-010-DP1.dgn	CHECKED - LJB	REVISED -			742	38VBR-1	OGLE	87	71
	PLOT SCALE =	DRAWN - EF	REVISED -			CONTRACT NO. 64D16				
	PLOT DATE =	CHECKED - LJB	REVISED -			ILLINOIS FED. AID PROJECT				