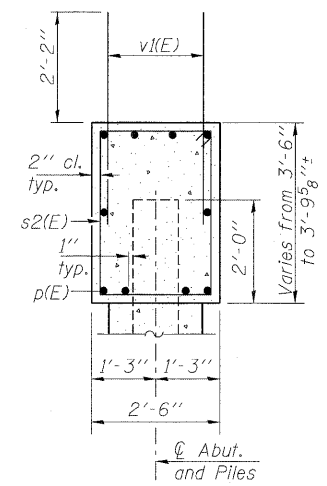
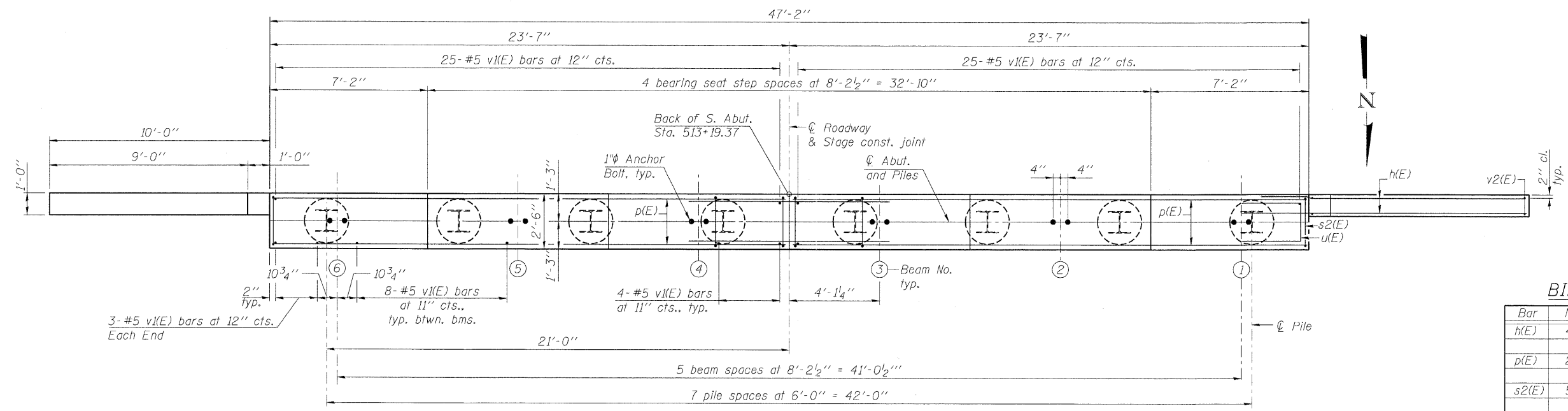


ELEVATION



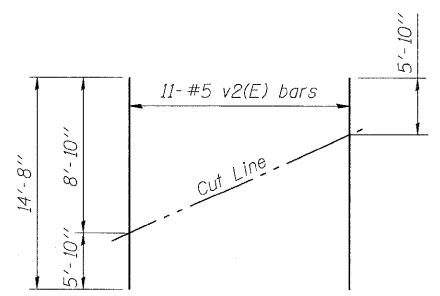
SEC. THRU ABUT.



PLAN

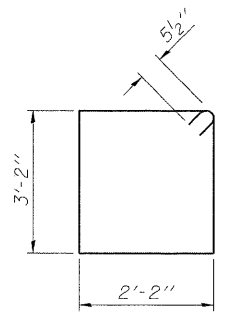
PILE DATA

Type: HP 12x53
 Nominal Required Bearing: 282 kips
 Factored Resistance Available: 155 kips
 Est. Length: 69 ft.
 No. Production Piles: 7
 No. Test Piles: 1

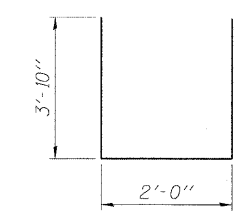


FIELD CUTTING DIAGRAM

Order v2(E) full length. Cut as shown and use remainder of bars in opposite face.



BAR s2(E)



BAR u(E)

BILL OF MATERIAL

Bar No.	Size	Length	Shape
h(E)	#6	14'-11"	—
p(E)	#7	23'-3"	—
s2(E)	#5	11'-7"	□
u(E)	#6	9'-8"	□
v(E)	#5	4'-4"	—
v2(E)	#5	14'-8"	—
Structure Excavation	Cu. Yd.	80	
Concrete Structures	Cu. Yd.	21.8	
Reinforcement Bars, Epoxy Coated	Pound	3,590	
Furnishing Steel Piles, HP12x53	Foot	483	
Driving Piles	Foot	483	
Test Pile Steel, HP12x53	Each	1	
Concrete Encasement	Cu. Yd.	2.8	

NOTES

1. Pour steps monolithically with cap.
2. For details of Bar Splicers, see sheet 23 of 26.
3. For details of piles and Concrete Encasement, see sheet 22 of 26.

T:\S015\Phase II\11-28\11-28\Structure.dgn, 11.2.dgn, 07/10/07 9:40:16 AM, 019-SA01.dgn

LOCHNER
 H.W. LOCHNER, INC.
 CONSULTING ENGINEERS AND PLANNERS
 20 N. WACKER DRIVE, SUITE 1200
 CHICAGO, ILLINOIS 60606

USER NAME =	DESIGNED - LJB	REVISED -
FILE NAME = 0710297-64016-019-SA01.dgn	CHECKED - GWS	REVISED -
PLOT SCALE =	DRAWN - EF	REVISED -
PLOT DATE =	CHECKED - GWS	REVISED -

STATE OF ILLINOIS
 DEPARTMENT OF TRANSPORTATION

SOUTH ABUTMENT PLAN & ELEVATION
 STRUCTURE NO. 071-0097

SHEET NO. 19 OF 26 SHEETS

F.A.P. RTE. 742	SECTION 38VBR-1	COUNTY OGLE	TOTAL SHEETS 87	SHEET NO. 80
CONTRACT NO. 64D16			ILLINOIS FED. AID PROJECT	