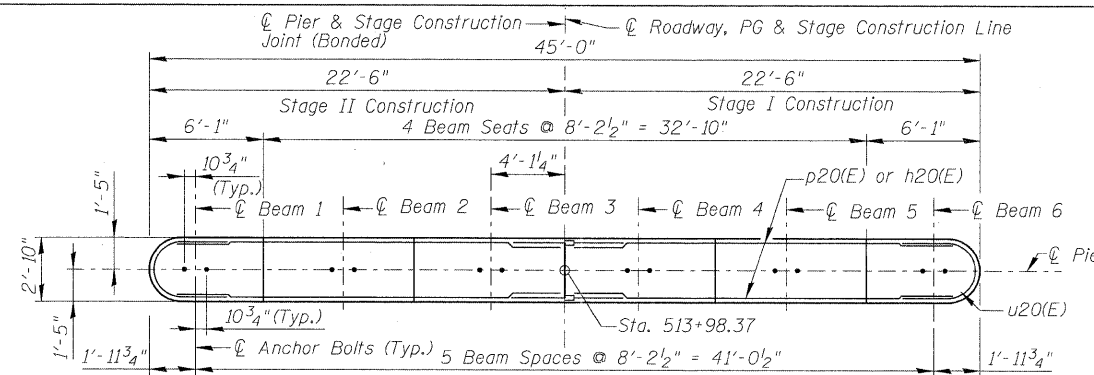
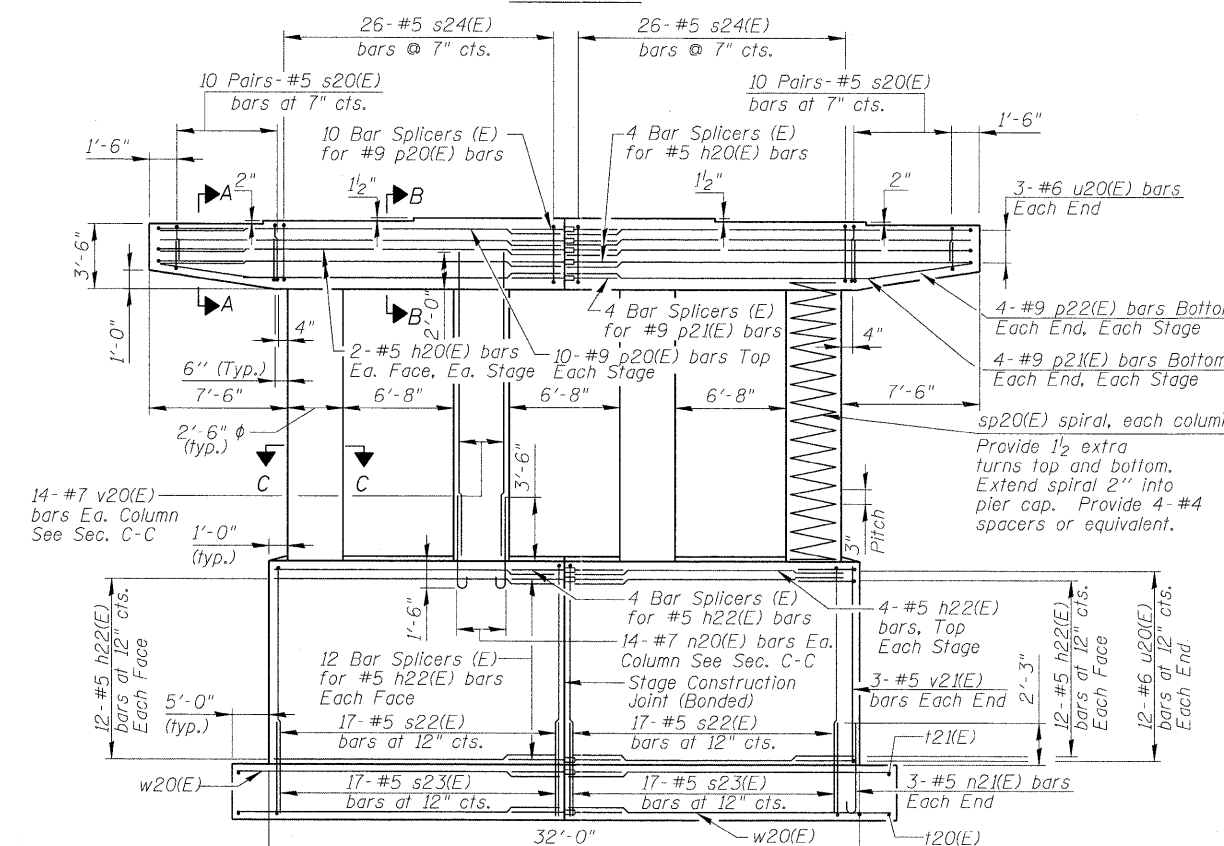


NOTES:

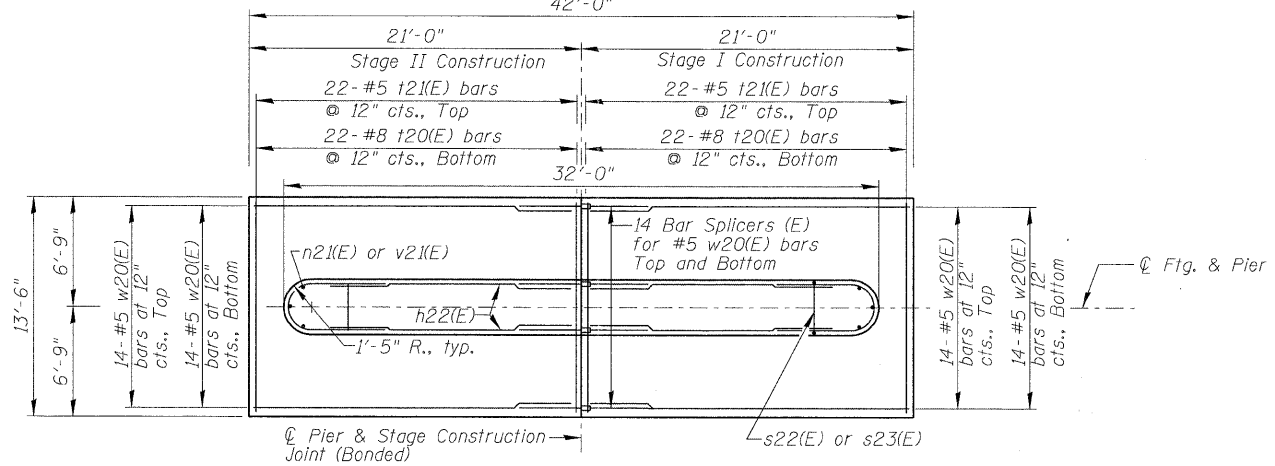
1. Space reinforcement in cap to miss anchor bolts.
2. Pour steps monolithically with cap.
3. For details of bar splicers see Sheet 23 of 26.



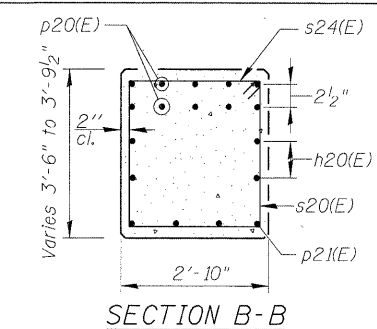
TOP PLAN



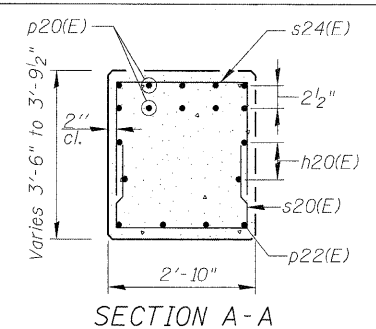
ELEVATION
(Looking North)



FOOTING PLAN



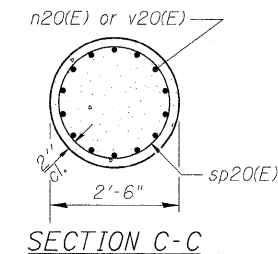
SECTION B-B



SECTION A-A

BEARING SEAT ELEV

BEAM	ELEV.
1	727.21
2	727.38
3	727.51
4	727.51
5	727.38
6	727.21



SECTION C-C

BILL OF MATERIAL

Bar No.	Size	Length	Shape
h20(E)	8 #5	20'-9"	—
h22(E)	56 #5	14'-3"	—
n20(E)	56 #7	5'-10"	U
n21(E)	6 #5	5'-7"	U
p20(E)	20 #9	22'-3"	—
p21(E)	8 #9	15'-6"	—
p22(E)	8 #9	10'-10"	—
s20(E)	40 #5	7'-2"	L
s22(E)	34 #5	24'-2"	L
s23(E)	34 #5	12'-6"	L
s24(E)	52 #5	12'-3"	□
sp20(E)	4 #5	14'-11"	W
t20(E)	44 #8	13'-2"	—
t21(E)	44 #5	13'-2"	—
u20(E)	30 #6	8'-11"	U
v20(E)	56 #7	16'-9"	—
v21(E)	6 #5	10'-10"	—
w20(E)	56 #5	20'-9"	—
Structure Excavation	Cu. Yd.	179	
Concrete Structures	Cu. Yd.	127.2	
Reinforcement Bars, Epoxy Coated	Pound	13,620	

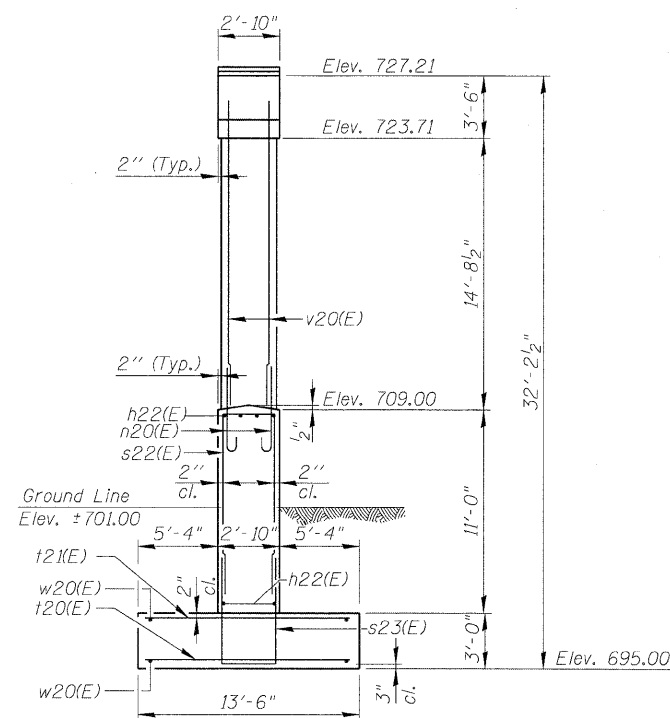
** Length is height of spiral.

A & B Dimensions

Bar	A	B
s20(E)	2'-6"	2'-4"
s22(E)	2'-6"	10'-10"
s23(E)	2'-6"	5'-0"
s24(E)	2'-6"	3'-2"

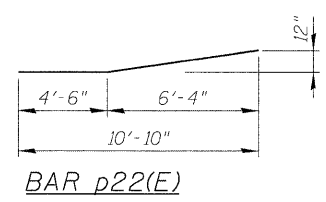
C, D & E Dimensions

Bar	C	D	E
n20(E)	5'-0"	10"	7"
n21(E)	5'-0"	7"	5"



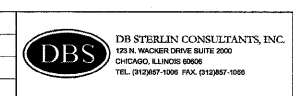
END VIEW

The maximum applied bearing pressure = $Q_{max} = 5.9$ ksf



BAR p22(E)

USER NAME =	DESIGNED - GMK	REVISED -
PLOT SCALE =	DRAWN - GFP	REVISED -
PLOT DATE =	CHECKED - WPK/GMK	REVISED -
FILE NAME =	DATE - 08/01/2011	REVISED -



STATE OF ILLINOIS
DEPARTMENT OF TRANSPORTATION

PIER 1
STRUCTURE NUMBER 071-0097
SHEET NO. 20 OF 26 SHEETS

F.A.P. RTE. = 742	SECTION = 38VBR-1	COUNTY = OGLE	TOTAL SHEETS = 87	SHEET NO. = 81
				CONTRACT NO. 64D16
FED. ROAD DIST. NO. 2 [ILLINOIS] FED. AID PROJECT				