

F.A.P. RTE.	SECTION	COUNTY	TOTAL SHEETS	SHEET NO.
316	4VBR-1	OGLE	73	1
		ILLINOIS	CONTRACT NO. 64D17	

INDEX OF SHEETS

- 1 COVER SHEET
- 2 - 3 GENERAL NOTES
- 4 - 7 SUMMARY OF QUANTITIES
- 8 - 9 TYPICAL SECTIONS
- 10 - 12 SCHEDULES OF QUANTITIES
- 13 - 14 HORIZONTAL AND VERTICAL CONTROL
- 15 PLAN AND PROFILE SHEETS
- 16 - 18 MAINTENANCE OF TRAFFIC
- 19 EROSION CONTROL PLAN
- 20 PAVEMENT MARKING PLAN
- 21 DRAINAGE PLAN AND PROFILE
- 22 RIGHT OF WAY
- DISTRICT STANDARDS:
- 23 33.1 CONCRETE COLLARS FOR PIPE OR BOX CULVERT EXTENSIONS
- 24 - 26 41.1 TYPICAL PAVEMENT MARKINGS
- 27 92.1 DETAILS OF PLANTING AND BRACING TREES
- 28 10.2 INLET SPECIAL
- 29 39.2 INFORMATIONAL WARNING SIGNS (FOR NARROW TRAVEL LANES)
- 30 66.2 WITNESS MARKER FOR PERMANENT SURVEY MARKERS, TYPE II
- 31 75.2 ENTRANCE SIGN FOR USE WITH TEMPORARY SIGNALS
- 32 - 44 91.2 ROUGH GROOVED SURFACE SIGN
- 45 - 73 37.4 DELINEATOR AND POST ORIENTATION
- 50.4 TYPICAL BENCHING ON EXISTING EMBANKMENT
- 99.4 STOP LINE FOR TEMPORARY SIGNALS
- CROSS SECTIONS
- STRUCTURE PLANS

STATE OF ILLINOIS
DEPARTMENT OF TRANSPORTATION
DIVISION OF HIGHWAYS
PROPOSED
HIGHWAY PLANS

FAP ROUTE 316 US 52 / IL-26
SECTION 4VBR-1
PROJECT :ACNHF-0316(037)
BRIDGE REPLACEMENT
OGLE COUNTY

FOR LIST OF HIGHWAY STANDARDS, SEE SHEET NO. 2

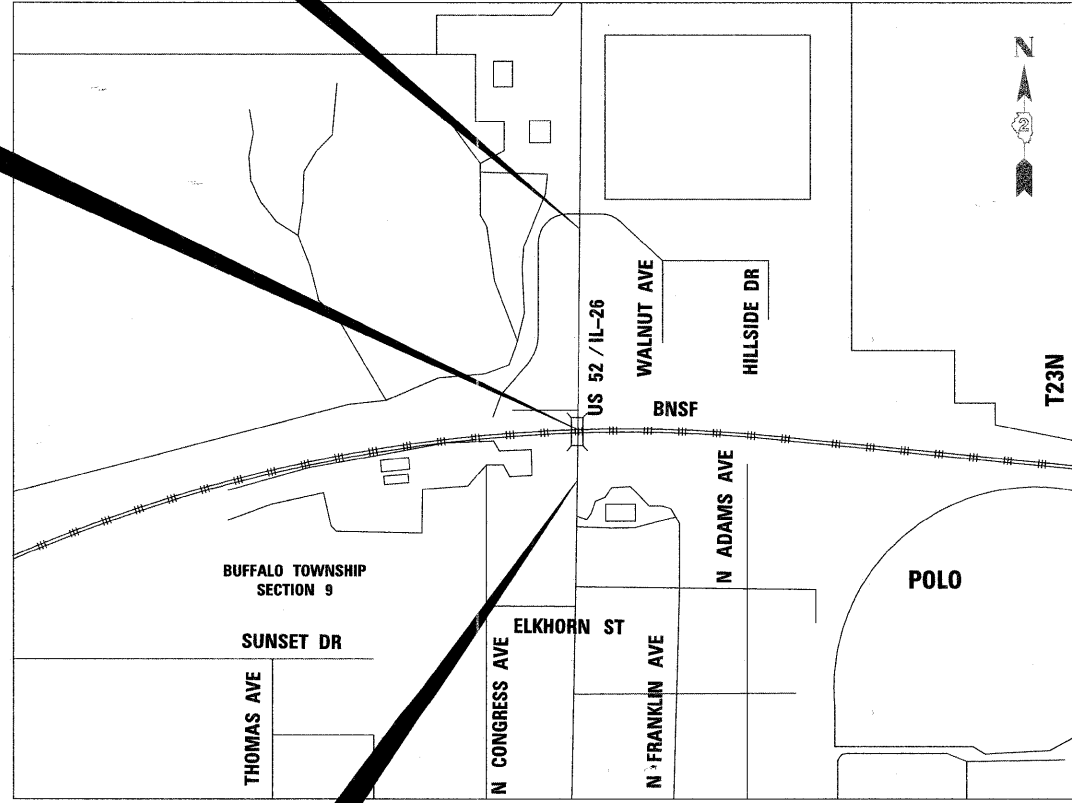
D-92-057-07



SECTION / IMPROVEMENT BEGINS
STA. 385 + 01.84
(US 52 / IL-26)

C-92-079-07

BRIDGE REPLACEMENT
STA. 391 + 55.05
EXISTING STRUCTURE #071-0010
PROPOSED STRUCTURE #071-0096

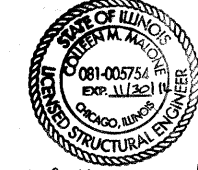


SECTION ENDS STA. 395 + 00.00
IMPROVEMENT ENDS STA. 398 + 19.27
(US 52 / IL-26)

LOCATION MAP NOT TO SCALE



Andrew K. Kassay 8/12/11
 SHEETS 1-44



Colleen Malone
 SHEETS 45-64, 68-73



Ghulam M. Kamal 8/16/11
 SHEETS 65-67

FUNCTIONAL CLASSIFICATION
OTHER PRINCIPAL ARTERIAL
2032 ADT - 4975
P.V. = 88.4% S.U. = 7.0% M.U. = 4.6%

STATE OF ILLINOIS
 DEPARTMENT OF TRANSPORTATION
 DIVISION OF HIGHWAYS

SUBMITTED August 19, 20 11

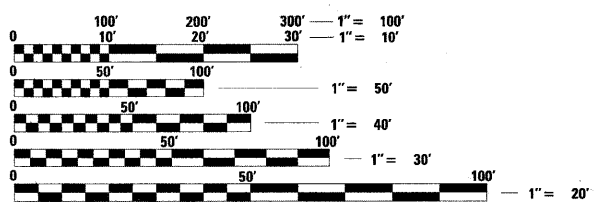
Eric S. D'Amico
 DEPUTY DIRECTOR OF HIGHWAYS, REGION ENGINEER

October 14 20 11

Scott E. Still, P.E.
 acting ENGINEER OF DESIGN AND ENVIRONMENT

October 14 20 11

Christine M. Reed
 DIRECTOR OF HIGHWAYS, CHIEF ENGINEER



FULL SIZE PLANS HAVE BEEN PREPARED USING STANDARD ENGINEERING SCALES. REDUCED SIZED PLANS WILL NOT CONFORM TO STANDARD SCALES. IN MAKING MEASUREMENTS ON REDUCED PLANS, THE ABOVE SCALES MAY BE USED.

J.U.L.I.E.
 JOINT UTILITY LOCATION INFORMATION FOR EXCAVATION
 1-800-892-0123
 OR 811

PROJECT ENGINEER: MASOOD AHMAD
PROJECT MANAGER: MADAN CHAND (815) 284-5359
HW LOCHNER: COLLEEN MALONE (312) 372-3011
CONTRACT NO. 64D17 F.A.P. 316 (US 52 / IL 26) SECTION 4VBR-1 OGLE COUNTY

GROSS LENGTH = 998.16 FT. = 0.189 MILE
 NET LENGTH = 998.16 FT. = 0.189 MILE

LOCHNER
 H.W. LOCHNER, INC.
 CONSULTING ENGINEERS & PLANNERS
 20 NORTH WACKER DRIVE SUITE 1200
 CHICAGO, IL 60606

PRINTED BY THE AUTHORITY
OF THE STATE OF ILLINOIS