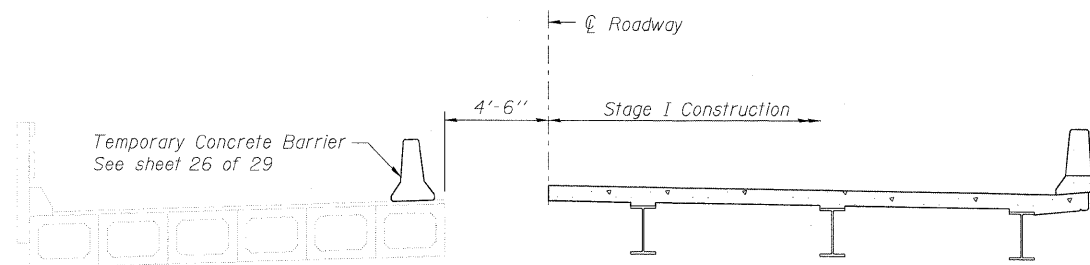
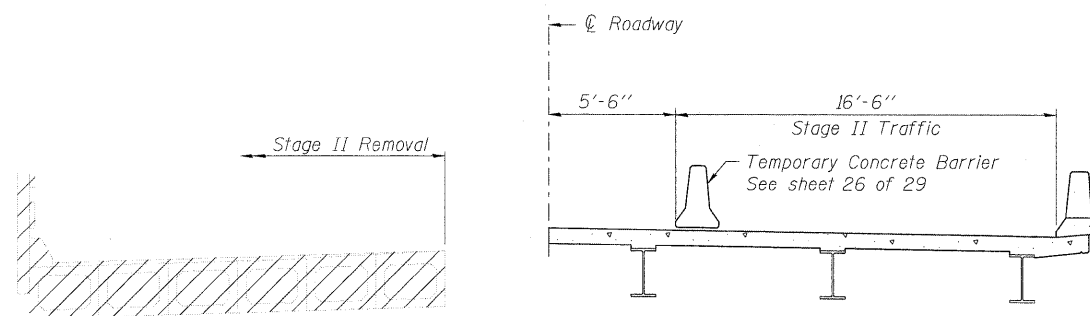


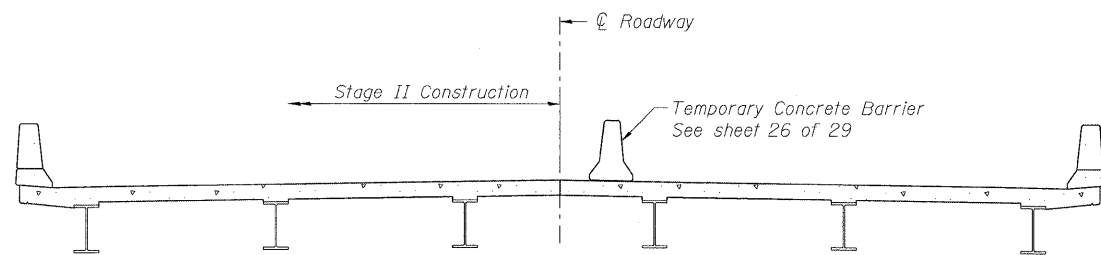
STAGE I REMOVAL



STAGE I CONSTRUCTION



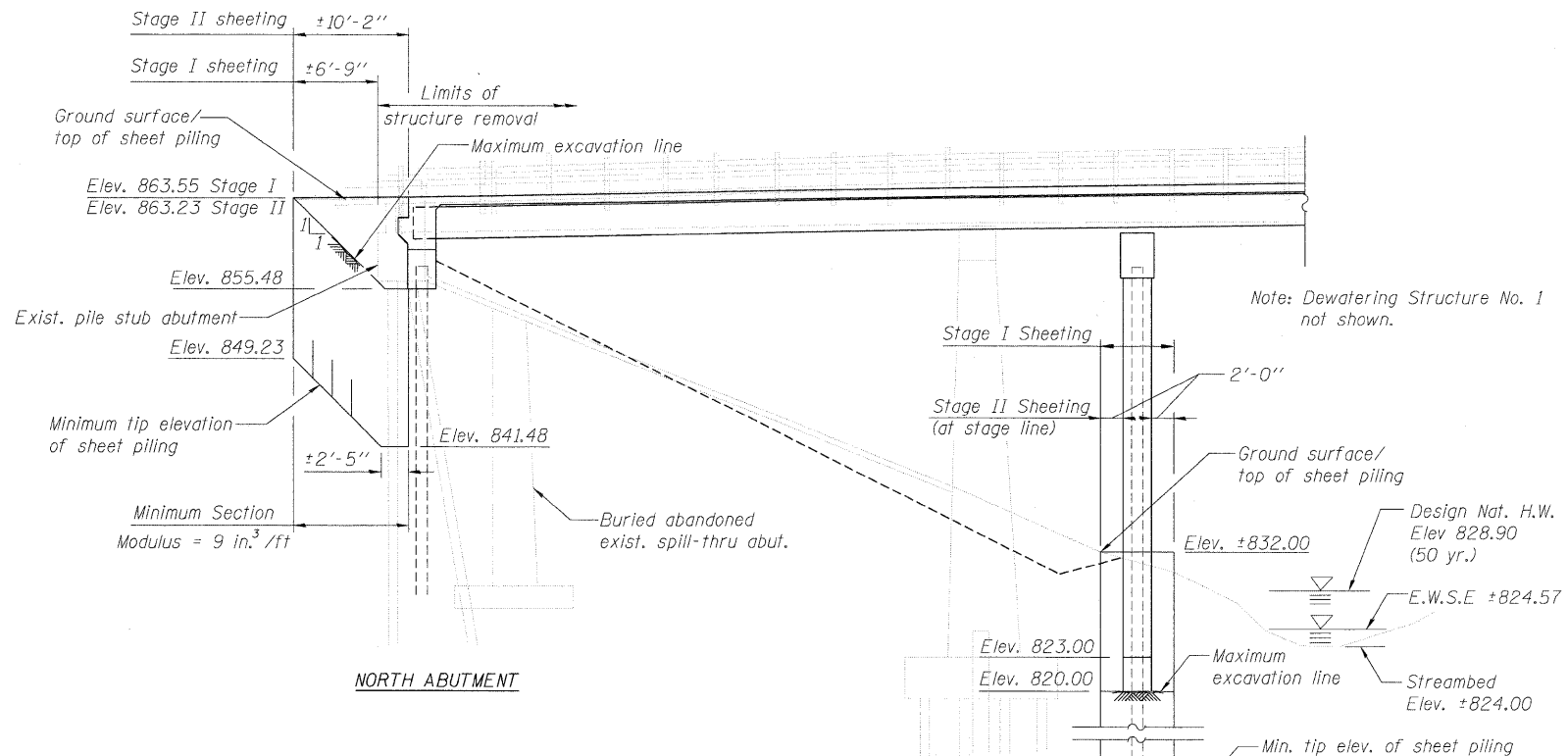
STAGE II REMOVAL



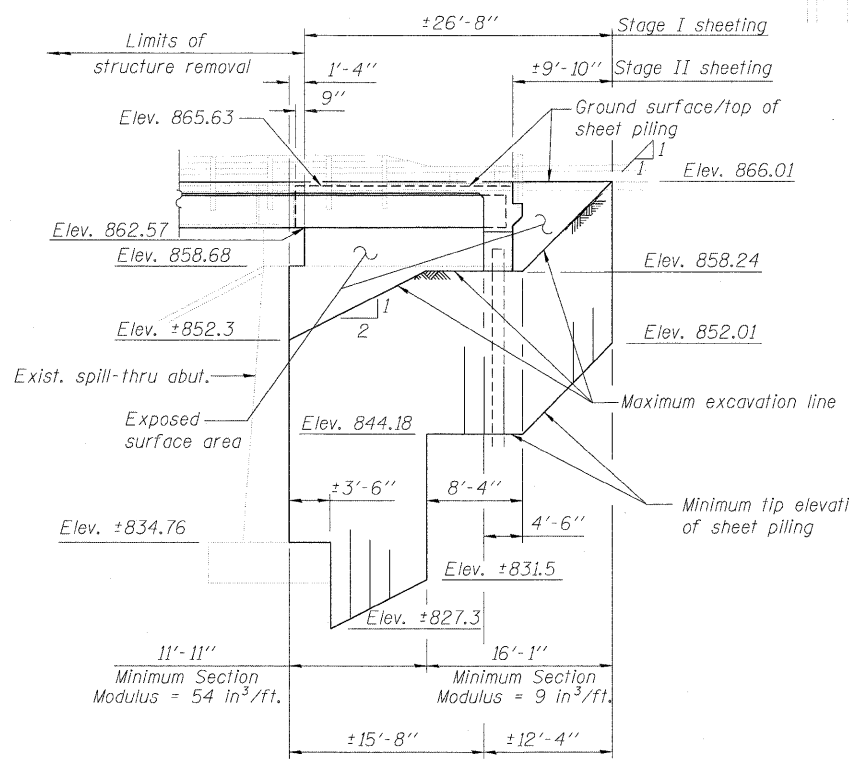
STAGE II CONSTRUCTION

Notes:

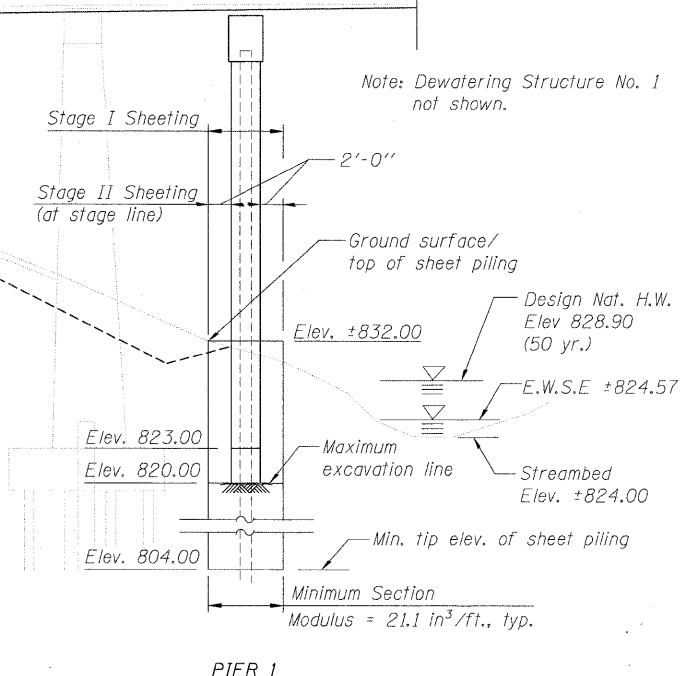
- All stage cross-sections are looking South.
- For quantity of Temporary Concrete Barrier see Roadway Plans.
- Temporary Support System shall be installed before superstructure removal in Stage I. See Shore Reaction Table for unfactored dead load at each pier.
- Temporary Support System lump sum includes 4 locations, a shore at each existing Pier 1, 2, 3 and 4.
- Hatched area indicates Removal of Existing Structures.
- Stage I on Structural plans corresponds to Stage 3A on Roadway plans; Stage II on Structural plans corresponds to Stage 3B on Roadway plans.



NORTH ABUTMENT



SOUTH ABUTMENT



PIER 1

TEMPORARY SHEET PILING DETAILS

- Notes:
- If the Contractor chooses to alter the temporary cantilevered sheet piling design requirements shown on the plans, a design submittal including plan details and calculations will be required for review and acceptance by the Engineer.
 - The Contractor shall connect the first sheet to the existing abutment cap to ensure stability of sheets driven to the top of the existing footing. This connection shall be reviewed and accepted by the Engineer and included in the cost for Temporary Sheet Piling.

SHORE REACTION TABLE			
Location	Un-Factored Dead Load (kips)	Un-Factored Live Load (kips)	"H" Height
Pier 1	58	98	17'-9"
Pier 2	69	106	17'-9"
Pier 3	69	106	27'-3"
Pier 4	63	101	27'-3"

* HL-93, Single Lane of Traffic, No Impact

T:\5015-Phase II_IL-284L-263-Struct\1.dgn\11.26.dgn\0710896-64017-003-DM1.dgn

LOCHNER
H.W. LOCHNER, INC.
CONSULTING ENGINEERS AND PLANNERS
20 N. WACKER DRIVE, SUITE 1200
CHICAGO, ILLINOIS 60606

USER NAME =	DESIGNED - GWS	REVISED -
FILE NAME = 0710296-64017-003-DM1.dgn	CHECKED - LJB/CMM	REVISED -
PLOT SCALE =	DRAWN - EF	REVISED -
PLOT DATE =	CHECKED - LJB/CMM	REVISED -

**STATE OF ILLINOIS
DEPARTMENT OF TRANSPORTATION**

**STAGING DETAILS
STRUCTURE 071-0096**

SHEET NO. 3 OF 29 SHEETS

F.A.P. RTE. 316	SECTION 4VBR-1	COUNTY OGLE	TOTAL SHEETS 73	SHEET NO. 47
CONTRACT NO. 64D17			ILLINOIS FED. AID PROJECT	