

GENERAL NOTES

Fasteners shall be AASHTO M164 Type 1, mechanically galvanized bolts in painted areas and M164 Type 3 in unpainted areas. Bolts 7/8 in. φ, holes 15/16 in. φ, unless otherwise noted.

Calculated weight of Structural Steel = 138,140 Pounds

All structural steel shall be AASHTO M 270 Grade 50W. All structural steel shall be cleaned as specified in the Special Provision for "Surface Preparation and Painting Requirements for Weathering Steel".

No field welding is permitted except as specified in the contract documents.

Reinforcement bars shall conform to the requirements of ASTM A 706 Gr 60.

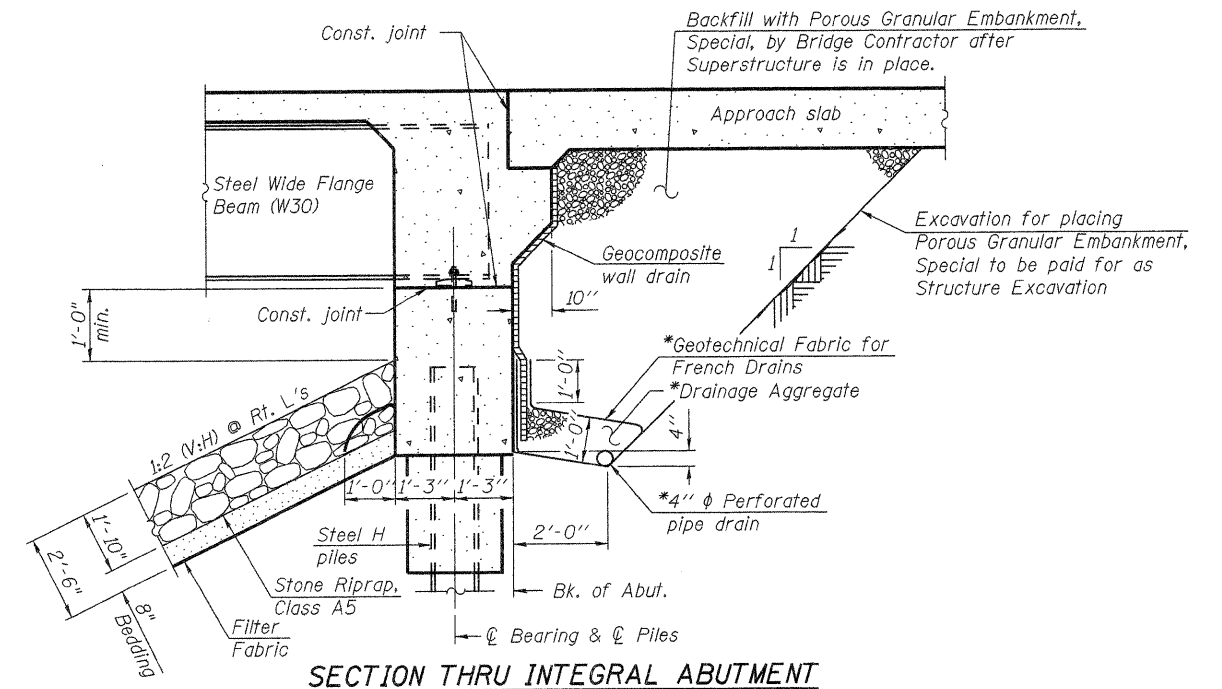
Reinforcement bars designated (E) shall be epoxy coated.

Bearing seat surfaces shall be constructed or adjusted to the designated elevations within a tolerance of 1/8 inch (0.01 ft.). Adjustment shall be made either by grinding the surface or by shimming the bearings.

Structural steel shall only be painted for a distance equal to the depth of embedment into the concrete cap plus 3 inches. Painted areas shall be primed in the shop with a Department approved zinc rich primer. Field painting will not be required.

Layout of slope protection system may be varied to suit ground conditions in the field as directed by the Engineer.

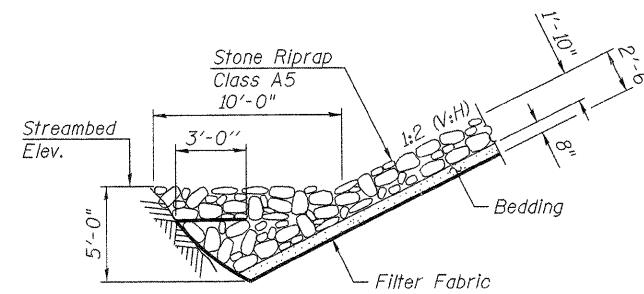
Slip forming of the parapets is not allowed.



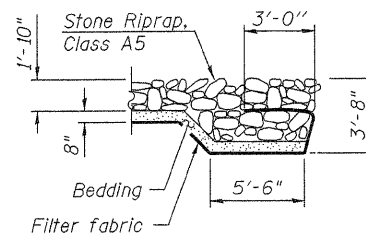
SECTION THRU INTEGRAL ABUTMENT

*Included in the cost of Pipe Underdrains for Structures.

Note:
All drainage system components shall extend to 2'-0" from the end of each wingwall except an outlet pipe shall extend until intersecting with the side slopes. The pipes shall drain into concrete headwalls. (See Article 601.05 of the Standard Specifications and Highway Standard 601101).



SECTION A-A



SECTION B-B

STATION 311+45.62
BUILT 20__ BY
STATE OF ILLINOIS
F.A.P. RT. 316 SEC. 102BR-6
LOADING HL-93
STR. NO. 052-0081

NAME PLATE
See Std. 515001

TOTAL BILL OF MATERIAL

ITEM	UNIT	SUPER	SUB	TOTAL
Concrete Structures	Cu. Yd.		178.8	178.8
Concrete Superstructure	Cu. Yd.	377.7		377.7
Bridge Deck Grooving	Sq. Yd.	934		934
Protective Coat	Sq. Yd.	1,148		1,148
Stud Shear Connectors	Each	3,801		3,801
Reinforcement Bars, Epoxy Coated	Pound	91,920	14,480	106,400
Bar Splicers	Each	821	106	927
Furnishing and Erecting Structural Steel	L. Sum	0.7		0.7
Name Plates	Each	1		1
Removal of Existing Structures No. 1	Each			1
Stone Riprap, Class A5	Sq. Yd.			1,194
Filter Fabric	Sq. Yd.			1,194
Porous Granular Embankment, Special	Cu. Yd.		102	102
Structure Excavation	Cu. Yd.		333	333
Furnishing Steel Piles HP 12x53	Foot		924	924
Furnishing Steel Piles HP 14x73	Foot		1,458	1,458
Driving Piles	Foot		2,382	2,382
Test Pile Steel HP 12x53	Each		2	2
Test Pile Steel HP 14x73	Each		2	2
Concrete Encasement	Cu. Yd.		15.8	15.8
Pipe Underdrains for Structures, 4"	Foot		150	150
Geocomposite Wall Drain	Sq. Yd.		68	68
Underwater Structure Excavation Protection, Location No. 1	Each		1	1
Underwater Structure Excavation Protection, Location No. 2	Each		1	1
Temporary Sheet Piling	Sq. Ft.		1,836	1,836
Anchor Bolts 1"	Each		56	56
Asbestos Bearing Pad Removal	Each	22		22