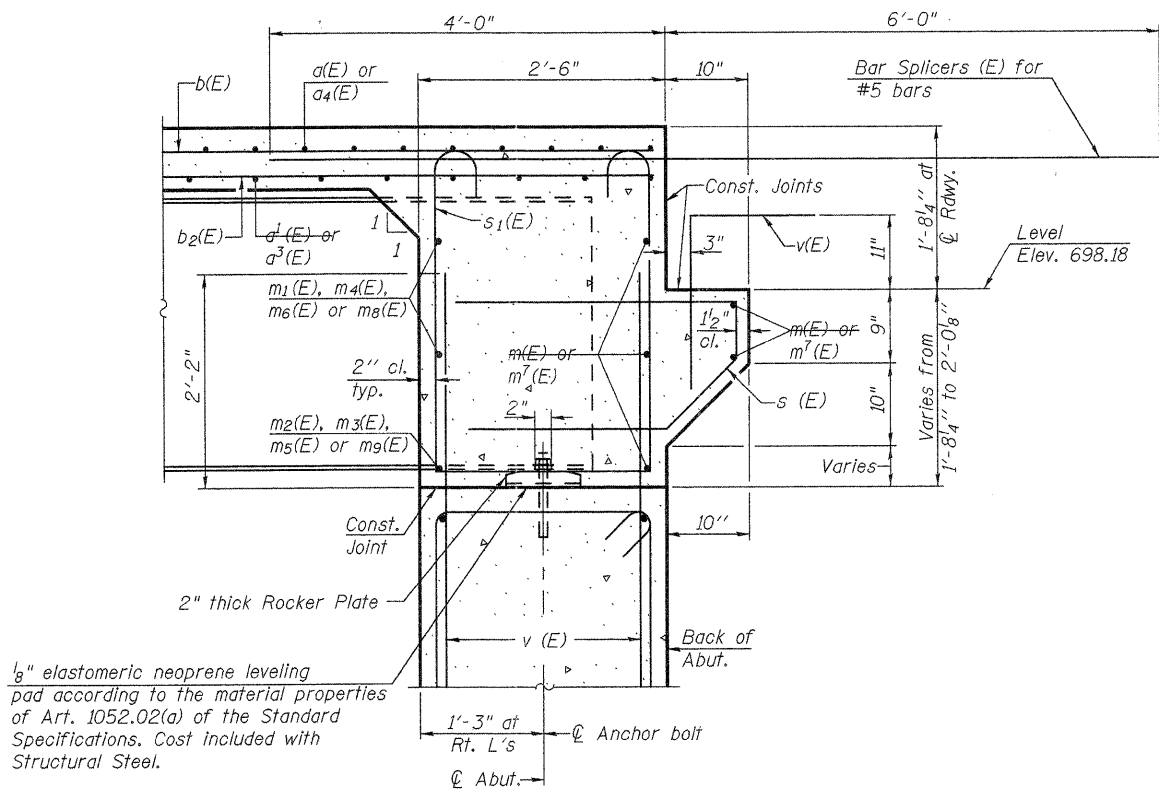


DIAPHRAGM ELEVATION AT SOUTH ABUTMENT
(Looking South)

Notes:
 Reinforcement bars in diaphragm are billed with superstructure on sheet 14 of 30.
 Concrete in diaphragm is included with Concrete Superstructure on sheet 14 of 30.
 For details of bars s(E) & s₁(E) see sheet 14 of 30.
 The s(E) and s₁(E) bars shall be placed parallel to the beams. Spacing for these bars shall be at right angles to the beams.
 For Bar Splicer details see sheet 27 of 30.

MIN. BAR LAP
 #6 bar = 3'-4"



SECTION A-A

Dimensions at right angles to abutment.

SI-DS1

7-1-10



FILE NAME = 0520001-64D57.DGN	DESIGNED - A.R.K.	REVISED -
USER NAME = S.A.P.	CHECKED - J.A.M.	REVISED -
PLOT SCALE =	DRAWN - S.A.P.	REVISED -
PLOT DATE = 08/18/11	CHECKED - A.R.K. & J.A.M.	REVISED -

**STATE OF ILLINOIS
DEPARTMENT OF TRANSPORTATION**

**SOUTH INTEGRAL ABUTMENT DIAPHRAGM DETAILS
STRUCTURE NO. 052-0081**

SHEET NO. 12 OF 30 SHEETS

F.A.P. RTE. 316	SECTION 102BR-6	COUNTY LEE	TOTAL SHEETS 216	SHEET NO. 74
				CONTRACT NO. 64D57
ILLINOIS FED. AID PROJECT				