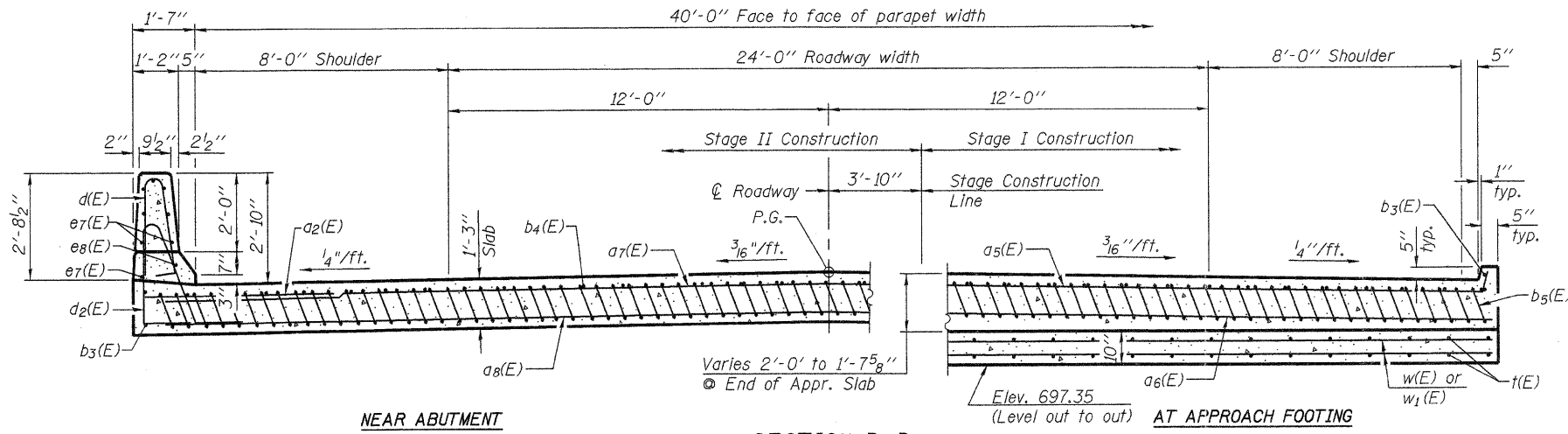


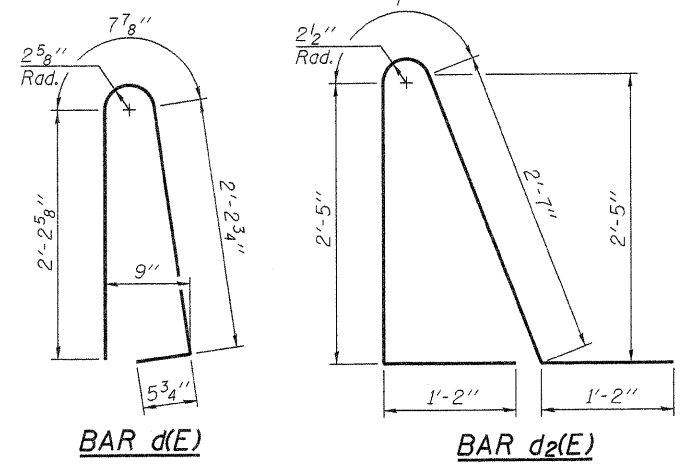
SECTION C-C

Notes:
 See sheet 15 of 30 for Detail A and View B-B.
 Approach slab and parapet concrete shall be paid for as Concrete Superstructure.
 Approach footing concrete shall be paid for as Concrete Structures.
 Reinforcement shall be paid for as Reinforcement Bars, Epoxy Coated.
 For v(E) bar details, see sheet 14 of 30.
 The approach footing maximum applied service bearing pressure (Q_{max}) = 2.0 ksf.
 For bar splicer details, see sheet 27 of 30.
 Cost of excavation for approach footing included with Concrete Structures.
 For Porous Granular Embankment (Special) and drainage treatment details, see sheet 2 of 30.
 For additional parapet details, see sheet 14 of 30.



SECTION D-D

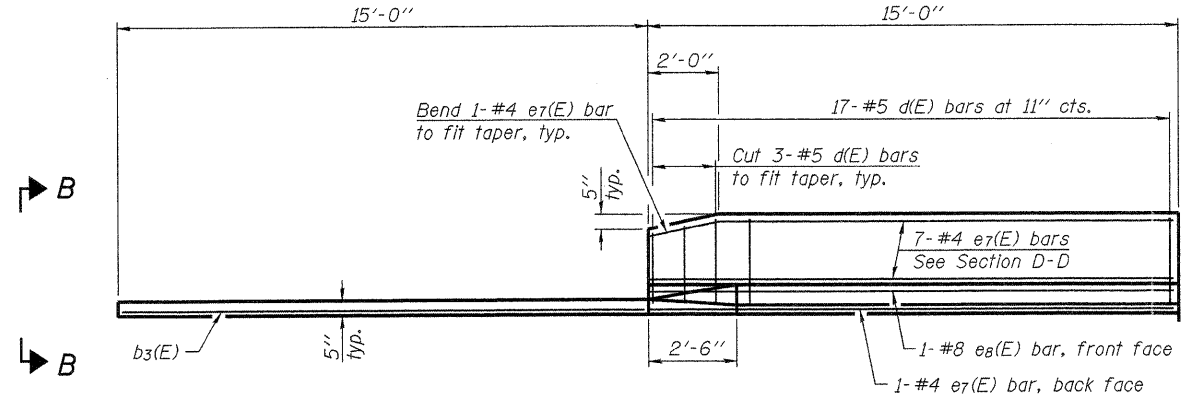
(Looking North)
 (See Plan on Sheet 15 of 30 for dimensions not shown)



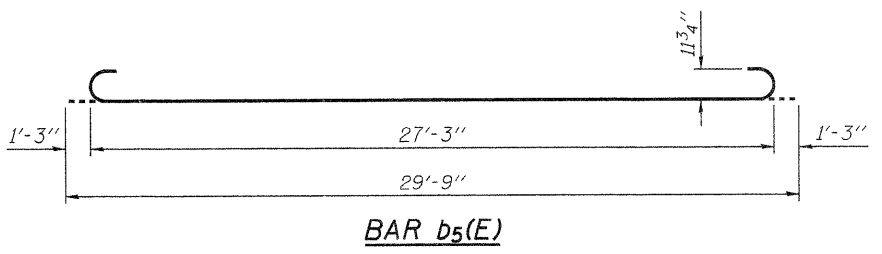
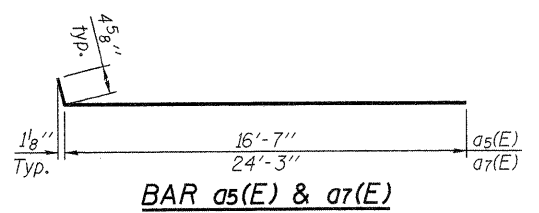
* Tilt #9 b5(E) bars as required to maintain clearance.
 *** Cost included with Concrete Superstructure.

**SOUTH APPROACH
 BILL OF MATERIAL**

Bar	No.	Size	Length	Shape
a2(E)	24	#6	6'-6"	—
a5(E)	25	#4	17'-0"	—
a6(E)	46	#5	16'-10"	—
a7(E)	25	#4	24'-8"	—
a8(E)	46	#5	24'-6"	—
b3(E)	4	#4	14'-8"	—
b4(E)	34	#4	29'-8"	—
b5(E)	96	#9	29'-9"	—
d(E)	34	#5	5'-7"	U
d2(E)	34	#5	7'-11"	U
e7(E)	16	#4	14'-8"	—
e8(E)	2	#8	14'-8"	—
t(E)	86	#4	17'-5"	—
w(E)	40	#5	16'-9"	—
w1(E)	40	#5	24'-5"	—
Concrete Superstructure		Cu. Yd.	69.7	
Concrete Structures		Cu. Yd.	12.9	
Reinforcement Bars, Epoxy Coated		Pound	16,770	



VIEW E-E



BA-0 7-1-10



FILE NAME = 0520081-64D57.DGN	DESIGNED - A.R.K.	REVISED -
USER NAME = S.A.P.	CHECKED - J.A.M.	REVISED -
PLOT SCALE =	DRAWN - S.A.P.	REVISED -
PLOT DATE = 08/10/11	CHECKED - A.R.K. & J.A.M.	REVISED -

**STATE OF ILLINOIS
 DEPARTMENT OF TRANSPORTATION**

**SOUTH BRIDGE APPROACH SLAB DETAILS
 STRUCTURE NO. 052-0081**

SHEET NO. 16 OF 30 SHEETS

F.A.P. RTE.	SECTION	COUNTY	TOTAL SHEETS	SHEET NO.
316	102BR-6	LEE	216	78
			CONTRACT NO. 64D57	
ILLINOIS FED. AID PROJECT				