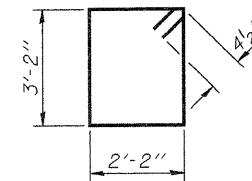
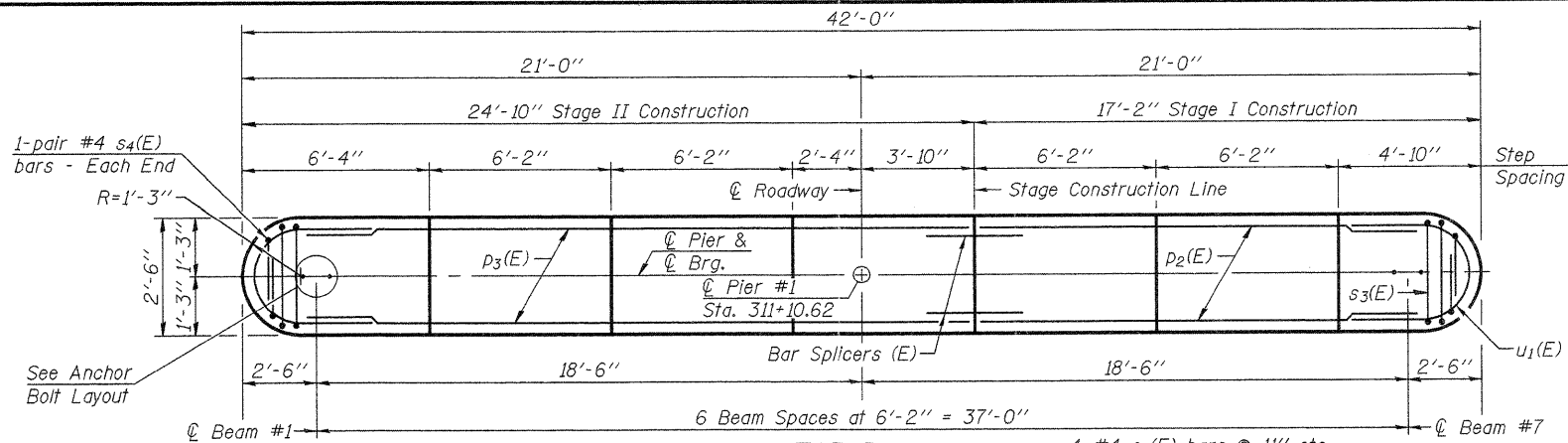
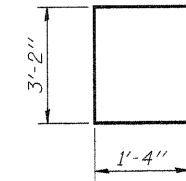


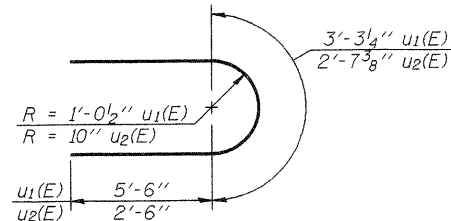
Notes:  
 If a portion of the pier wall or concrete encasement is under water, reinforcement may be placed underwater into forms. Concrete shall be tremied according to Article 503.08 of the Standard Specifications to an elevation of 1'-0" above the water line at the time of construction.  
 Space reinforcement in cap to miss anchor bolts. Pour steps monolithically with cap.  
 For details of piles and concrete encasement, see sheet 26 of 30.



BAR s3(E)



BAR s4(E)



BARS u1(E) & u2(E)

**PILE DATA**

Type: HP14x73  
 Nominal Required Bearing: 290 k  
 Factored Resistance Available: 157 k  
 Est. Length: 76 ft.  
 No. Production Piles: 9  
 No. Test Piles: 1

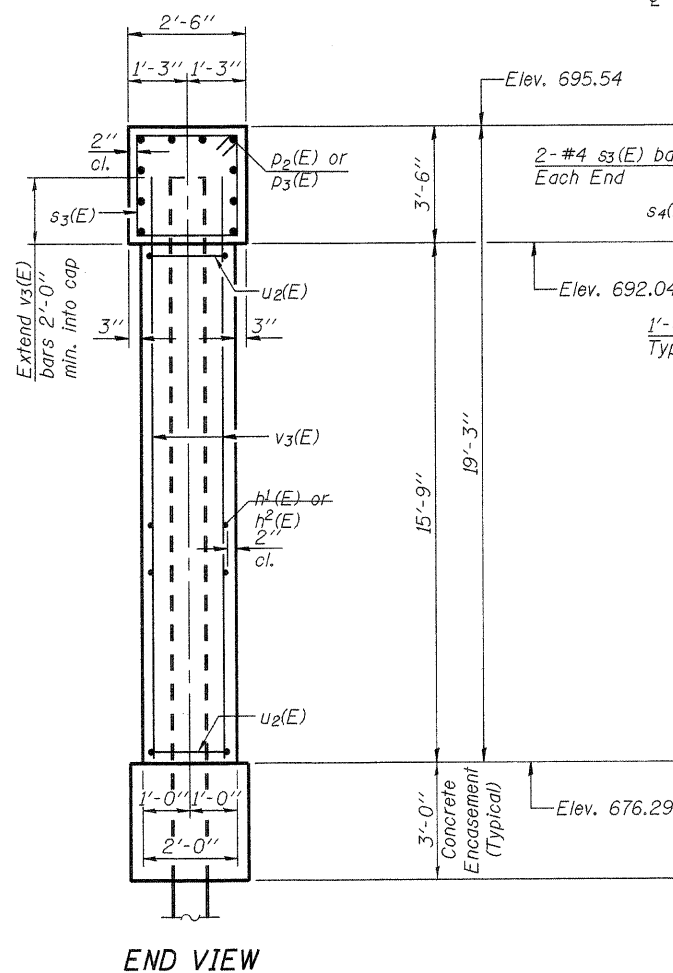
**PIER #1**

**BILL OF MATERIAL**

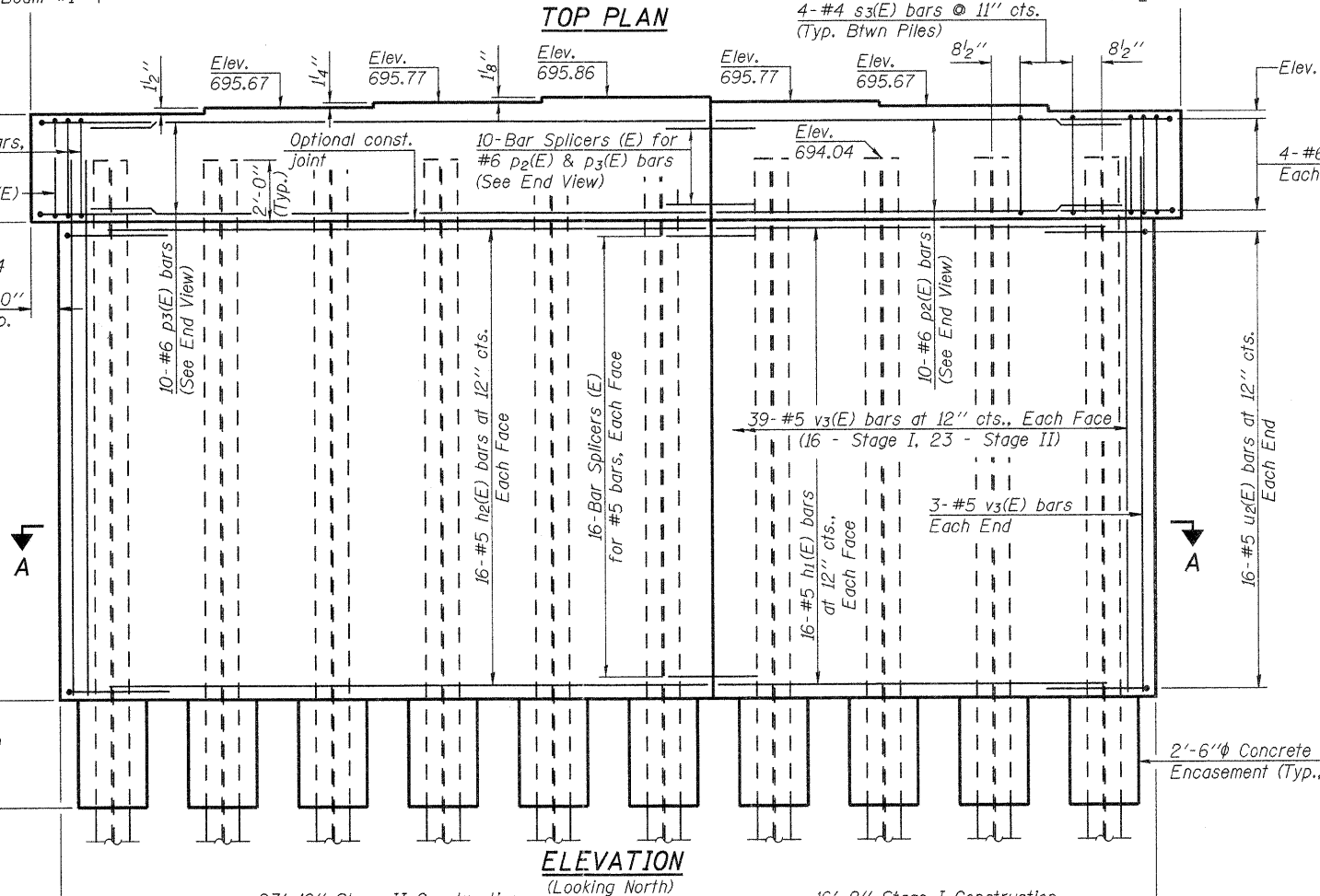
Bar	No.	Size	Length	Shape
h1(E)	32	#5	14'-11"	—
h2(E)	32	#5	22'-7"	—
p2(E)	10	#6	15'-8"	—
p3(E)	10	#6	23'-4"	—
s3(E)	40	#4	11'-5"	□
s4(E)	4	#4	5'-10"	□
u1(E)	8	#6	14'-3"	U
u2(E)	32	#5	7'-8"	U
v3(E)	84	#5	17'-7"	—
Structure Excavation		Cu. Yd.	70	
Concrete Structures		Cu. Yd.	60.2	
Reinforcement Bars, Epoxy Coated		Pound	4,130	
Furnishing Steel Piles, HP14x73		Foot	684	
Driving Piles		Foot	684	
Test Piles, Steel HP14x73		Each	1	
Concrete Encasement		Cu. Yd.	5.5	
Underwater Structure Excavation Protection, Location 1		Each	1	

For details of Bar Splicers, See Sheet 27 of 30.

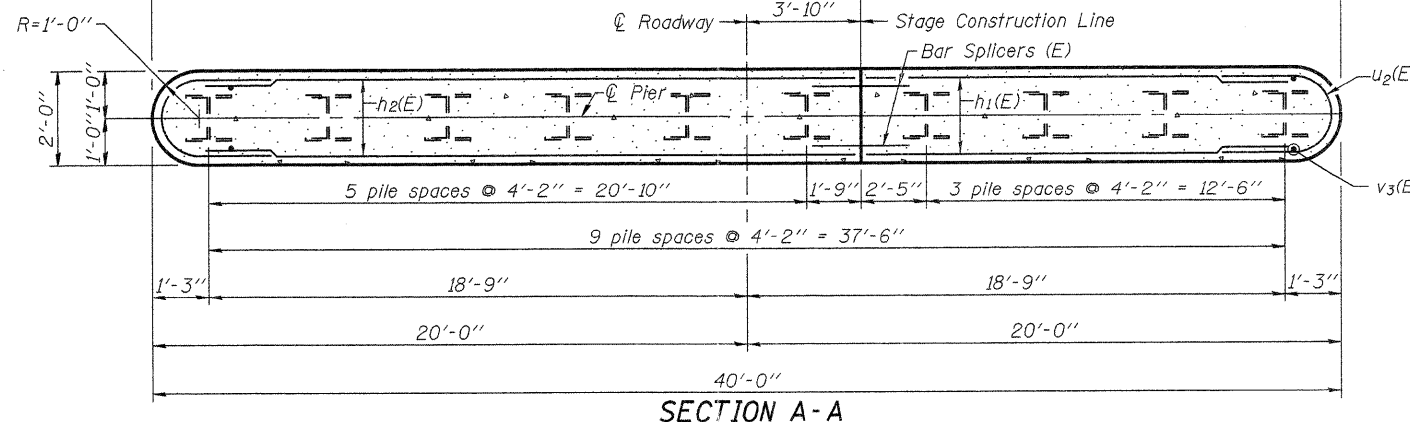
Steel H-Piles shall be according to AASHTO M270 Grade 50.



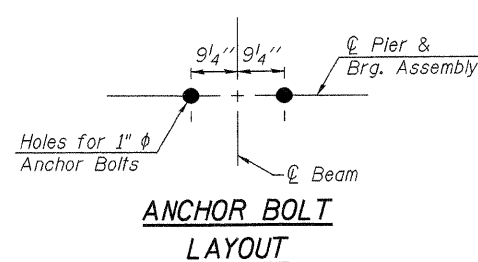
END VIEW



ELEVATION (Looking North)



SECTION A-A



ANCHOR BOLT LAYOUT

PC-1

7-1-10

**FEHR-GRAHAM & ASSOCIATES, LLC**  
 ENGINEERING AND SCIENCE CONSULTANTS

FILE NAME = 0520081-64D57.DGN  
 USER NAME = S.A.P.  
 PLOT SCALE =  
 PLOT DATE = 08/10/11

DESIGNED - A.R.K.  
 CHECKED - J.A.M.  
 DRAWN - S.A.P.  
 CHECKED - A.R.K. & J.A.M.

REVISED -  
 REVISED -  
 REVISED -  
 REVISED -

**STATE OF ILLINOIS**  
**DEPARTMENT OF TRANSPORTATION**

**PIER NO. 1**  
**STRUCTURE NO. 052-0081**

SHEET NO. 24 OF 30 SHEETS

F.A.P. RTE.	SECTION	COUNTY	TOTAL SHEETS	SHEET NO.
316	102BR-6	LEE	216	86
			CONTRACT NO. 64D57	
ILLINOIS FED. AID PROJECT				