

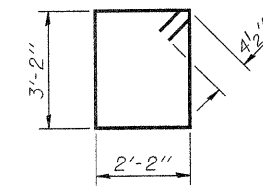
Notes:

If a portion of the pier wall or concrete encasement is under water, reinforcement may be placed underwater into forms. Concrete shall be tremied according to Article 503.08 of the Standard Specifications to an elevation of 1'-0" above the water line at the time of construction. Space reinforcement in cap to miss anchor bolts. Pour steps monolithically with cap. For details of piles and concrete encasement, see sheet 26 of 30.

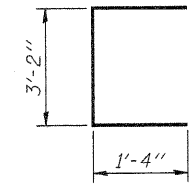


1-pair #4 s4(E) bars - Each End
R=1'-3"

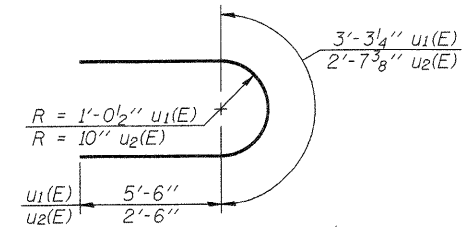
See Anchor Bolt Layout



BAR s3(E)



BAR s4(E)



BARS u1(E) & u2(E)

PILE DATA

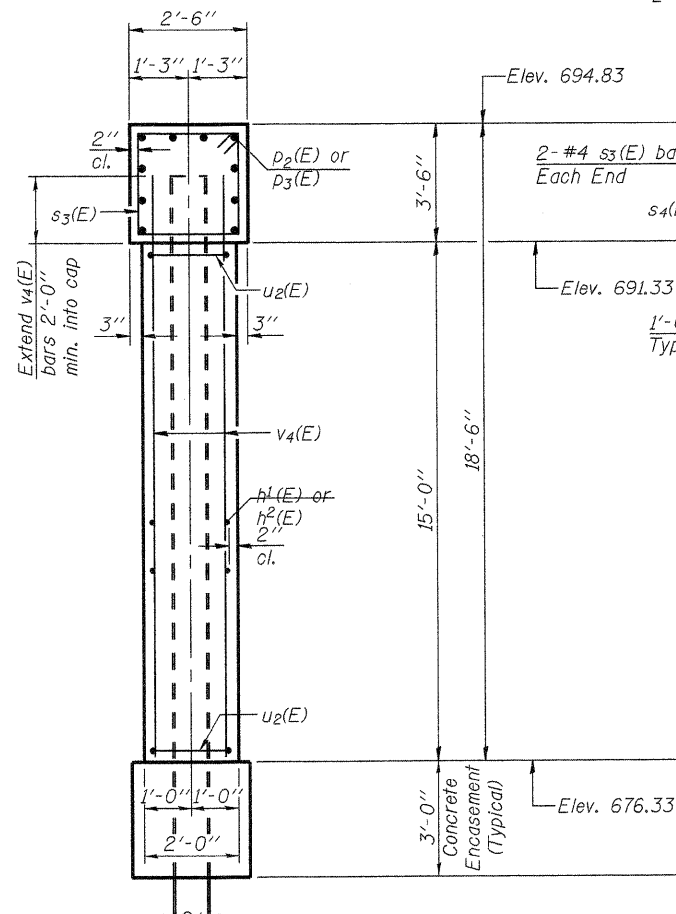
Type:.....HP14x73
Nominal Required Bearing:.....290 k
Factored Resistance Available:.....157 k
Est. Length:.....86 ft.
No. Production Piles:.....9
No. Test Piles:.....1

**PIER #2
BILL OF MATERIAL**

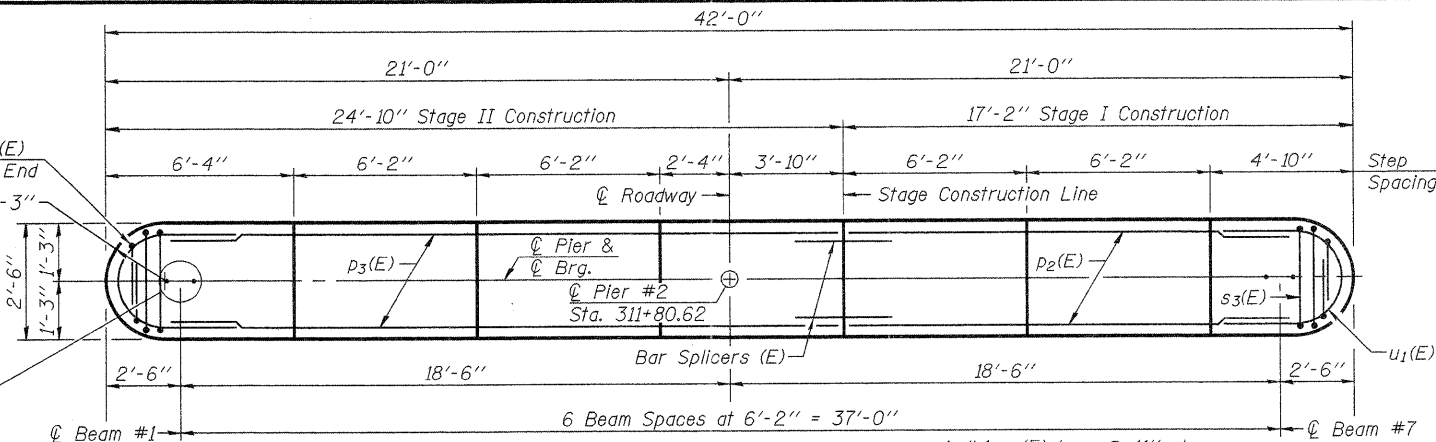
Bar	No.	Size	Length	Shape
h1(E)	30	#5	14'-11"	—
h2(E)	30	#5	22'-7"	—
p2(E)	10	#6	15'-8"	—
p3(E)	10	#6	23'-4"	—
s3(E)	40	#4	11'-5"	□
s4(E)	4	#4	5'-10"	□
u1(E)	8	#6	14'-3"	U
u2(E)	30	#5	7'-8"	U
v4(E)	84	#5	16'-10"	—
Structure Excavation			Cu. Yd.	71
Concrete Structures			Cu. Yd.	58.0
Reinforcement Bars, Epoxy Coated			Pound	3,970
Furnishing Steel Piles, HP14x73			Foot	774
Driving Piles			Foot	774
Test Piles, Steel HP14x73			Each	1
Concrete Encasement			Cu. Yd.	5.5
Underwater Structure Excavation Protection, Location 2			Each	1

For details of Bar Splicers, See Sheet 27 of 30.

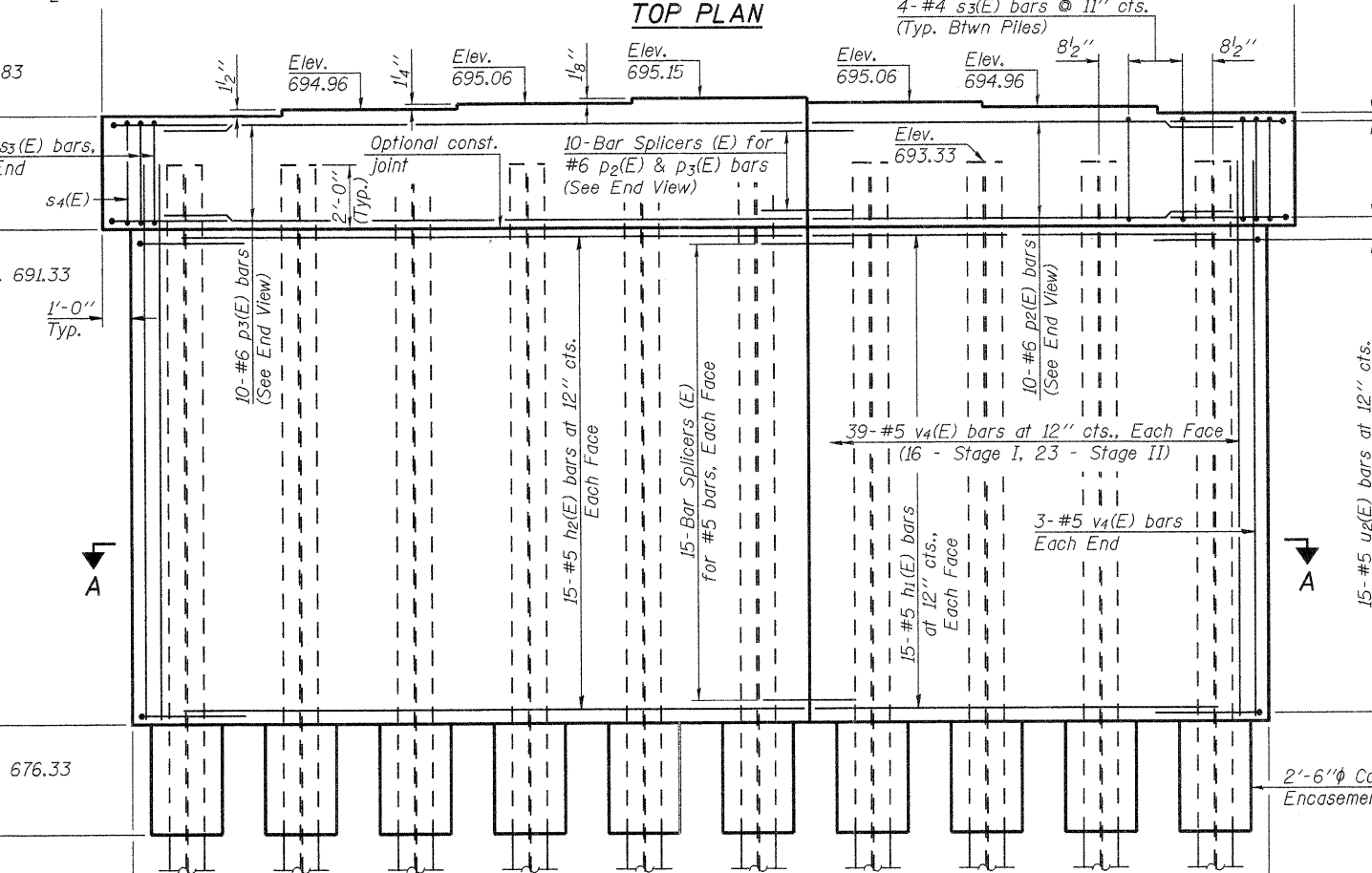
Steel H-Piles shall be according to AASHTO M270 Grade 50.



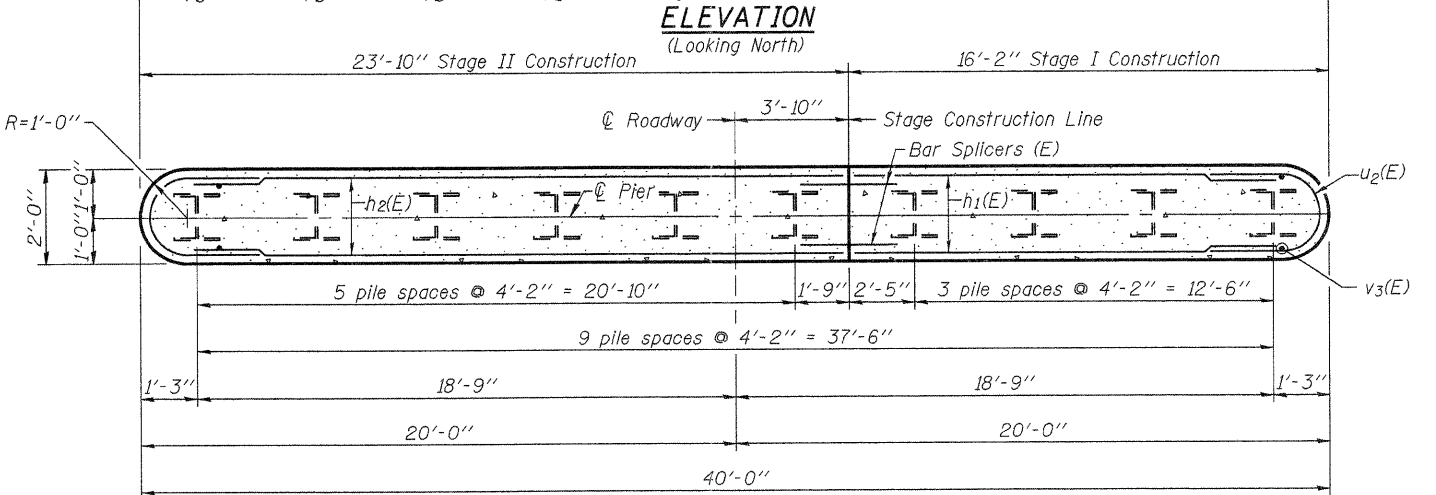
END VIEW



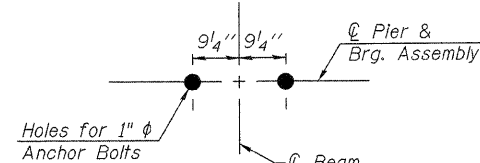
TOP PLAN



ELEVATION (Looking North)



SECTION A-A



ANCHOR BOLT LAYOUT

PC-1 7-1-10



FILE NAME = 0520081-64D57.DGN
USER NAME = S.A.P.
PLOT SCALE =
PLOT DATE = 08/10/11

DESIGNED - A.R.K.
CHECKED - J.A.M.
DRAWN - S.A.P.
CHECKED - A.R.K. & J.A.M.

REVISED -
REVISED -
REVISED -
REVISED -

STATE OF ILLINOIS
DEPARTMENT OF TRANSPORTATION

PIER NO. 2
STRUCTURE NO. 052-0081

SHEET NO. 25 OF 30 SHEETS

F.A.P. RTE.	SECTION	COUNTY	TOTAL SHEETS	SHEET NO.
316	102BR-6	LEE	216	87
				CONTRACT NO. 64D57
ILLINOIS FED. AID PROJECT				