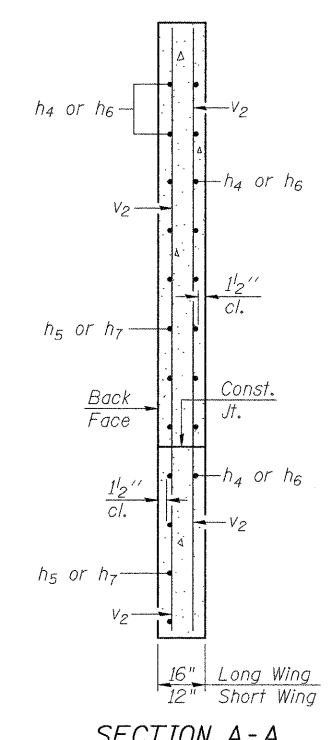


Note:
A distance of half the length of the wingwall but not less than six feet of the barrel shall be poured monolithically with the wingwalls.

MIN. BAR LAP
#8 Bar = 3'-8"



(Sheet 1 of 2)

	USER NAME =	DESIGNED - MTH	REVISED -	STATE OF ILLINOIS DEPARTMENT OF TRANSPORTATION	CULVERT DETAILS STRUCTURE NO. 052-2031	F.A.P. RTE. =	SECTION	COUNTY	TOTAL SHEETS	SHEET NO.	
	FILE NAME =	CHECKED - KHH	REVISED -			316	102-BR7	LEE	216	97	
	PLOT SCALE =	DRAWN - AJF	REVISED -			CONTRACT NO. 64D57					
	PLOT DATE =	CHECKED - MTH	REVISED -			ILLINOIS FED. AID PROJECT					

SHEET NO. 5 OF 9 SHEETS