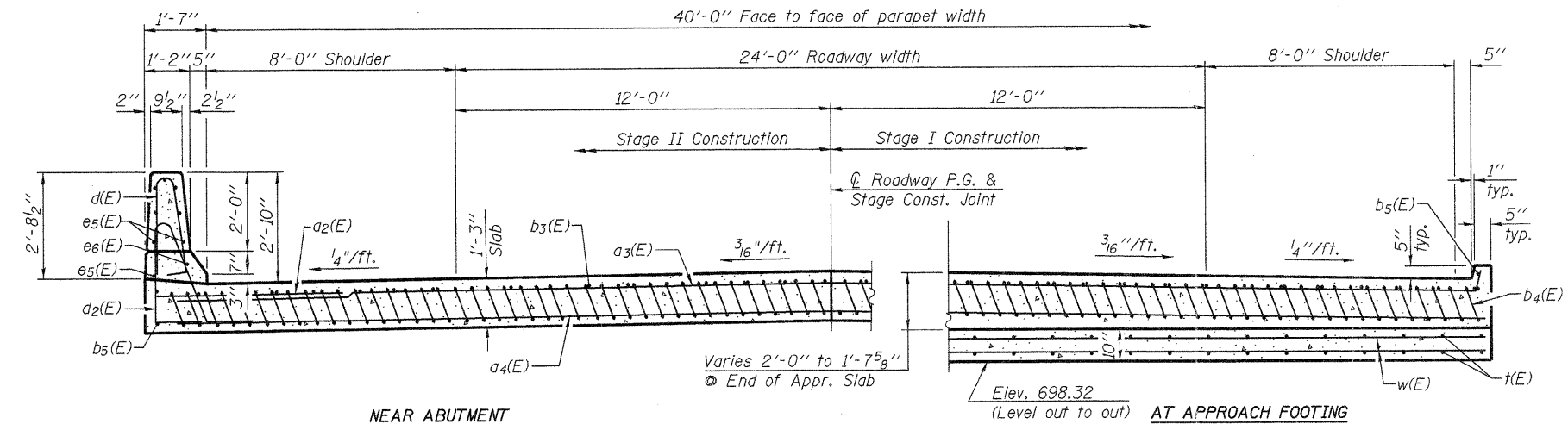


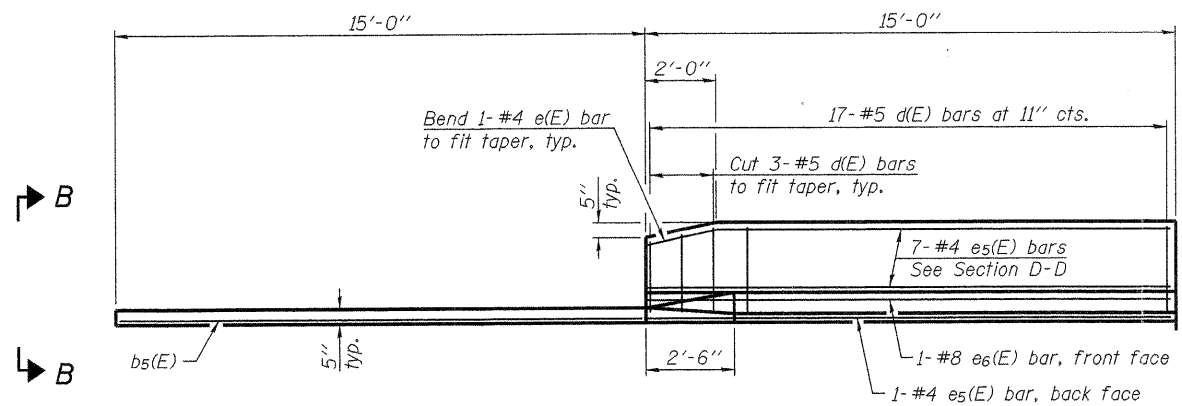
**SECTION C-C**



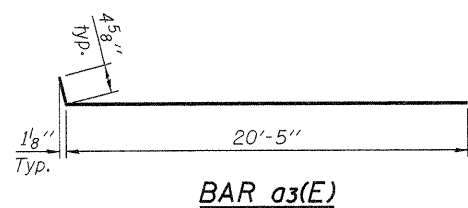
**NEAR ABUTMENT**

**SECTION D-D**

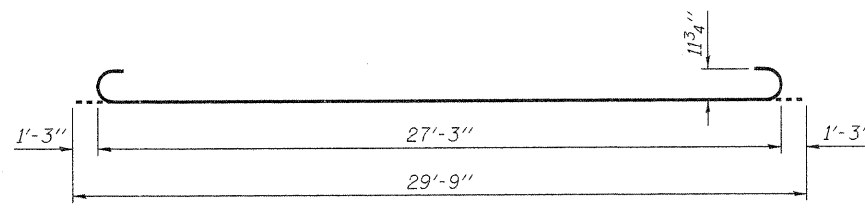
(Looking North)  
(See Plan on Sheet 17 of 32 for dimensions not shown)



**VIEW E-E**

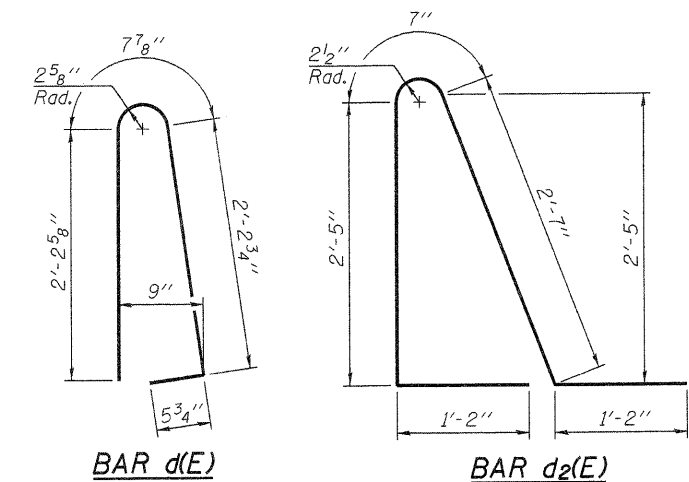


**BAR a3(E)**



**BAR b4(E)**

Notes:  
See sheet 17 of 32 for Detail A and View B-B.  
Approach slab and parapet concrete shall be paid for as Concrete Superstructure.  
Approach footing concrete shall be paid for as Concrete Structures.  
Reinforcement shall be paid for as Reinforcement Bars, Epoxy Coated.  
For v(E) bar details, see sheet 14 of 32.  
The approach footing maximum applied service bearing pressure (Qmax) = 2.0 ksf.  
For bar splicer details, see sheet 28 of 32.  
Cost of excavation for approach footing included with Concrete Structures.  
For Porous Granular Embankment, Special and drainage treatment details, see sheet 2 of 32.  
For additional parapet details, see sheet 14 of 32.



**BAR d(E)**

**BAR d2(E)**

\* Tilt #9 b4(E) bars as required to maintain clearance.

\*\*\* Cost included with Concrete Superstructure.

**NORTH APPROACH  
BILL OF MATERIAL**

Bar	No.	Size	Length	Shape
a2(E)	24	#6	6'-6"	—
a3(E)	50	#4	20'-10"	—
a4(E)	92	#5	20'-7"	—
b3(E)	34	#4	29'-8"	—
b4(E)	96	#9	29'-9"	—
b5(E)	4	#4	14'-8"	—
d(E)	34	#5	5'-7"	—
d2(E)	34	#5	7'-11"	—
e5(E)	16	#4	14'-8"	—
e6(E)	2	#8	14'-8"	—
t(E)	88	#4	9'-8"	—
w(E)	80	#5	20'-7"	—
Concrete Superstructure			Cu. Yd.	69.7
Concrete Structures			Cu. Yd.	12.9
Reinforcement Bars, Epoxy Coated			Pound	16,330

BA-0 7-1-10



FILE NAME = 052008B-64057.DGN	DESIGNED - J.A.M.	REVISED -
USER NAME = S.A.P.	CHECKED - A.R.K.	REVISED -
PLOT SCALE =	DRAWN - S.A.P.	REVISED -
PLOT DATE = 08/10/11	CHECKED - J.A.M. & A.R.K.	REVISED -

**STATE OF ILLINOIS  
DEPARTMENT OF TRANSPORTATION**

**NORTH BRIDGE APPROACH SLAB DETAILS  
STRUCTURE NO. 052-0080**

SHEET NO. 18 OF 32 SHEETS

F.A.P. RTE. 316	SECTION 102BR-5	COUNTY LEE	TOTAL SHEETS 216	SHEET NO. 119
			CONTRACT NO. 64D57	
ILLINOIS FED. AID PROJECT				