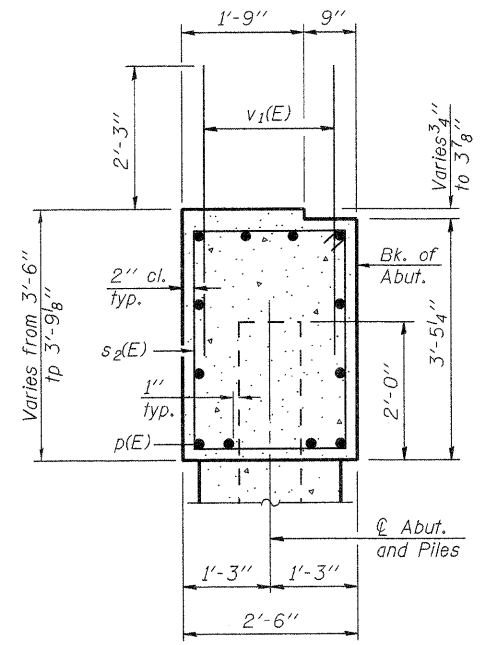
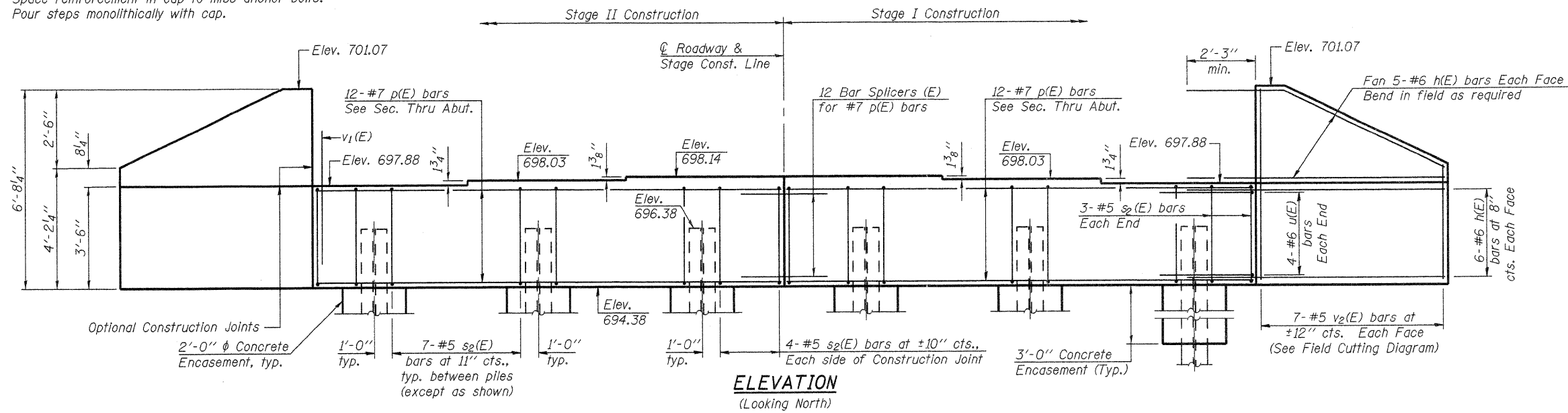


Notes:  
Space reinforcement in cap to miss anchor bolts.  
Four steps monolithically with cap.

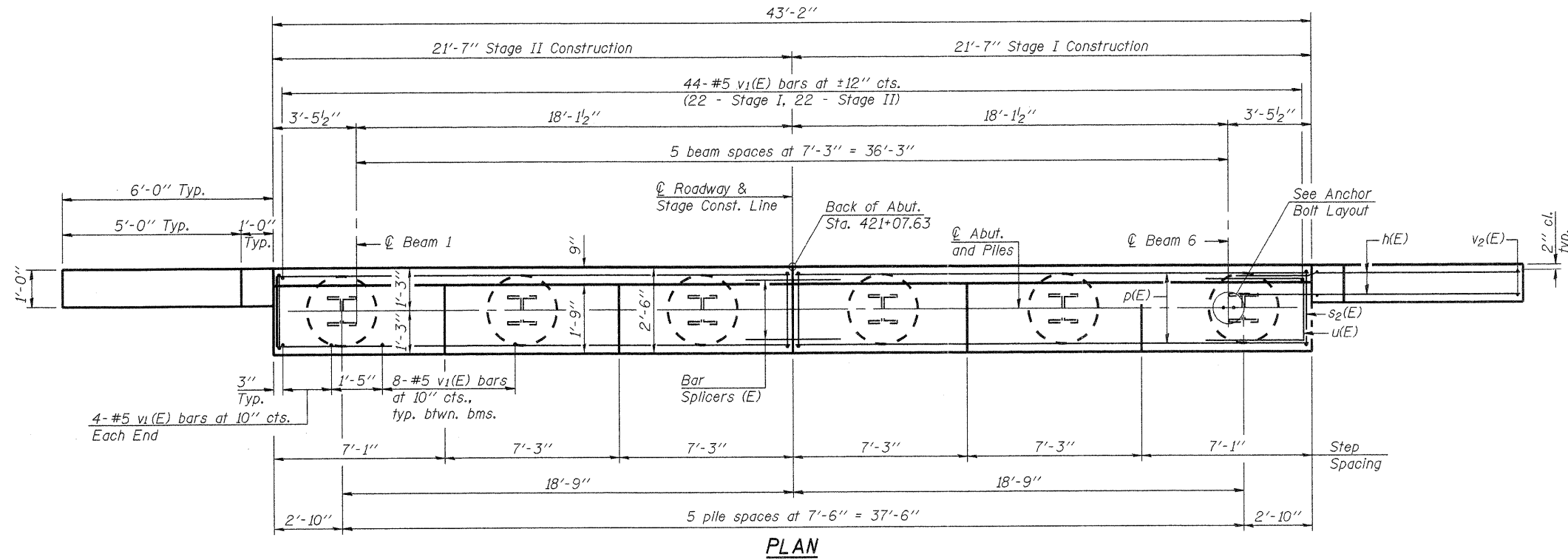


SEC. THRU ABUT.

**NORTH ABUTMENT  
BILL OF MATERIAL**

Bar	No.	Size	Length	Shape
h(E)	44	#6	8'-9"	—
p(E)	24	#7	21'-3"	—
s2(E)	42	#5	11'-7"	□
u(E)	8	#6	14'-1"	—
v1(E)	92	#5	4'-6"	—
v2(E)	14	#5	10'-5"	—
Structure Excavation		Cu. Yd.	149	
Concrete Structures		Cu. Yd.	16.8	
Reinforcement Bars, Epoxy Coated		Pound	2,880	
Furnishing Steel Piles, HP12x53		Foot	200	
Driving Piles		Foot	200	
Test Pile Steel HP12x53		Each	1	
Concrete Encasement		Cu. Yd.	2.1	

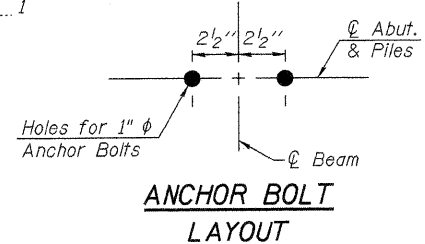
For details of Bar Splicers, see sheet 28 of 32.  
For details of piles and Concrete Encasement, see sheet 27 of 32.



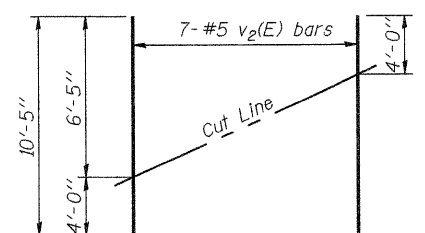
PLAN

**PILE DATA**

Type: HP12x53  
Nominal Required Bearing: 240 k  
Factored Resistance Available: 132 k  
Est. Length: 40 ft.  
No. Production Piles: 5  
No. Test Piles: 1

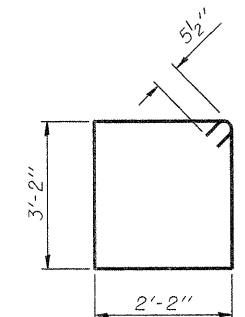


ANCHOR BOLT LAYOUT

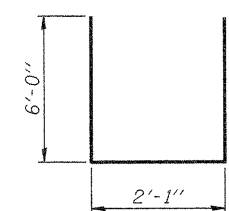


FIELD CUTTING DIAGRAM

Order v2(E) full length. Cut as shown and use remainder of bars in opposite face.



BAR s2(E)



BAR u(E)

AI-0 7-1-10



FILE NAME = 0520089-64057.DGN	DESIGNED - J.A.M.	REVISED -
USER NAME = S.A.P.	CHECKED - A.R.K.	REVISED -
PLOT SCALE =	DRAWN - S.A.P.	REVISED -
PLOT DATE = 08/10/11	CHECKED - J.A.M. & A.R.K.	REVISED -

STATE OF ILLINOIS  
DEPARTMENT OF TRANSPORTATION

NORTH ABUTMENT  
STRUCTURE NO. 052-0080

SHEET NO. 23 OF 32 SHEETS

F.A.P. RTE.	SECTION	COUNTY	TOTAL SHEETS	SHEET NO.
316	102BR-5	LEE	216	124
CONTRACT NO. 64D57			ILLINOIS FED. AID PROJECT	