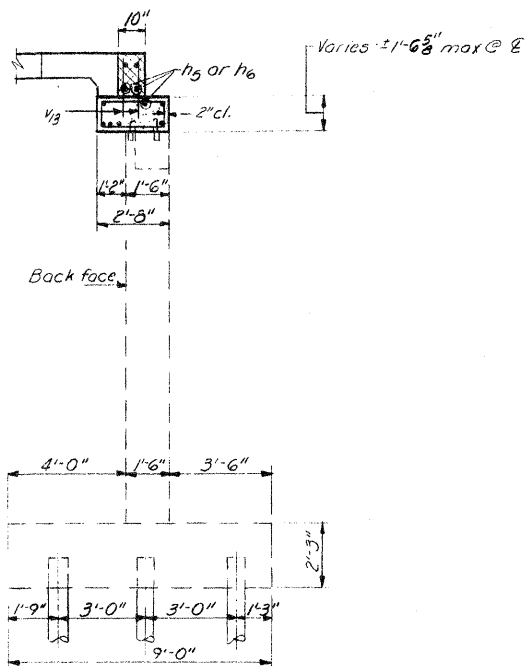


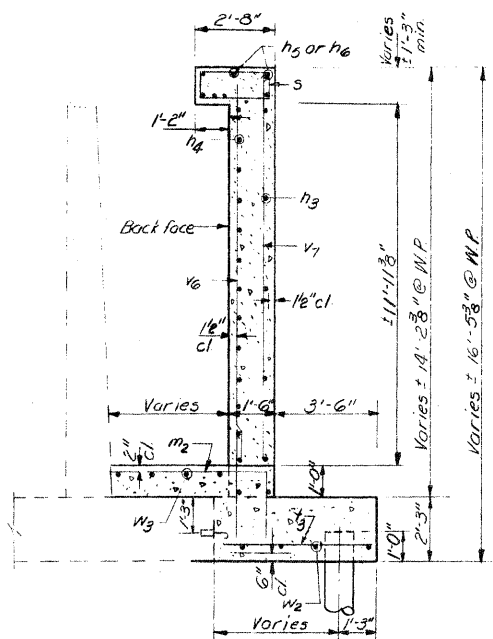
# EXISTING STRUCTURE PLANS (FOR REFERENCE ONLY)

STATE OF ILLINOIS  
DEPARTMENT OF PUBLIC WORKS & BUILDINGS  
DIVISION OF HIGHWAYS

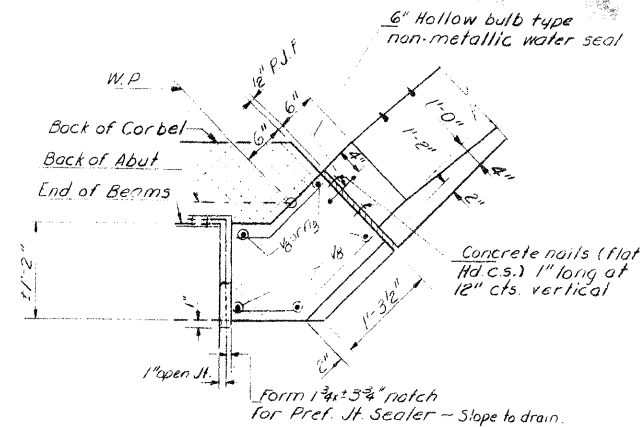
ROUTE NO.	SECTION	COUNTY	TOTAL SHEETS	SHEET NO.	SHEET NO. 6 8 SHEETS
27	102BR	LEE	10	8	
FED. ROAD DIST. NO. 7    ILLINOIS    FED. AID PROJECT					



SECTION A-A

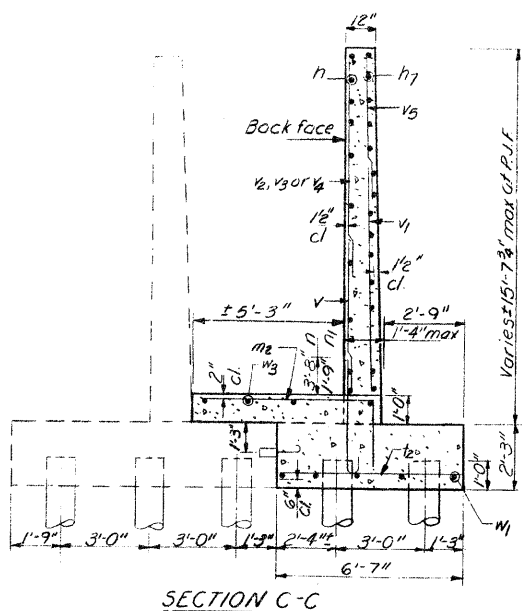


SECTION B-B

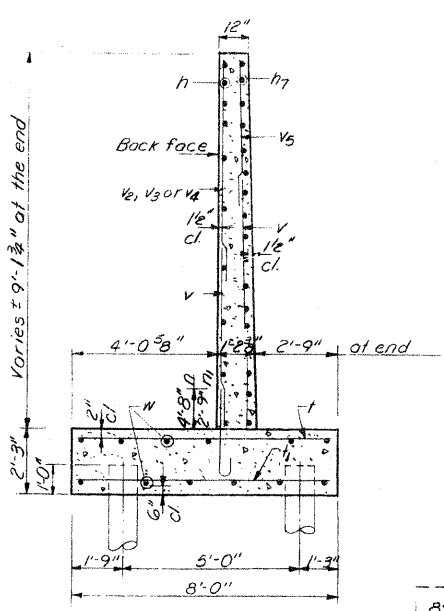


CORNER DETAIL A

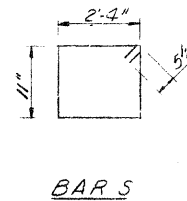
*Note:* Cross-hatched portion to be poured after beams are in place. Quantity billed with superstructure.



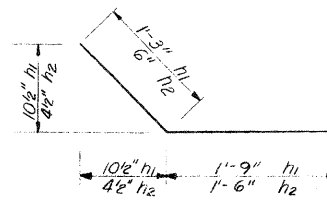
SECTION C-C



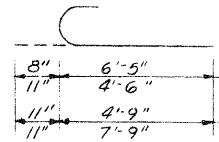
SECTION D-D



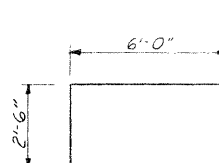
BARS



BARS n1 & n2



BARS n, n1, n2 & n3



BAR m2

NORTH ABUTMENT  
BILL OF MATERIAL

Bar	No.	Size	Length	Shape	Bar	No.	Size	Length	Shape
n1	20	#4	18'-0"	—	t3	20	#6	7'-0"	—
n2	36	#4	3'-0"	—	v1	38	#7	6'-3"	—
n3	20	#4	2'-0"	—	v2	12	#2	12'-0"	—
n4	28	#5	9'-0"	—	v3	12	#5	7'-3"	—
n5	12	#4	7'-3"	—	v4	12	#5	9'-6"	—
n6	11	#5	28'-0"	—	v5	4	#4	5'-0"	—
n7	32	#5	17'-0"	—	v6	16	#6	13'-1"	—
m1	8	#8	4'-6"	—	v7	6	#2	15'-1"	—
m2	28	#6	8'-6"	—	v8	10	#6	14'-6"	—
					v13	86	#4	2'-2"	—
n	36	#6	7'-1"	—	w	24	#5	9'-9"	—
n1	38	#8	5'-5"	—	w1	10	#5	14'-6"	—
n2	8	#8	5'-8"	—	w2	8	#5	8'-9"	—
n3	6	#8	8'-8"	—	w3	5	#5	24'-6"	—
s	44	#5	7'-5"	—	Reinforcement Bars Lbs 6910				
t	26	#4	7'-9"	—	Class 1 Concrete Cu Yds 67.6				
t1	25	#5	7'-9"	—	Concrete Removal Cu Yds 2				
t2	24	#6	6'-3"	—	Exp Bolts 3/4" Ea 56				
					Untreated Piles Lin. Ft 380				
					Test Pile Timber Ea. 1				

NORTH ABUTMENT DETAILS  
SBI RT 89 SEC 102 BR  
LEE COUNTY  
STA 489+50

DESIGNED	J. M. Patel	EXAMINED	[Signature]
CHECKED	[Signature]	PASSED	[Signature]
DRAWN	Bev Robinson	APPROVED	[Signature]
CHECKED	[Signature]	DATE	Nov. 24 1971