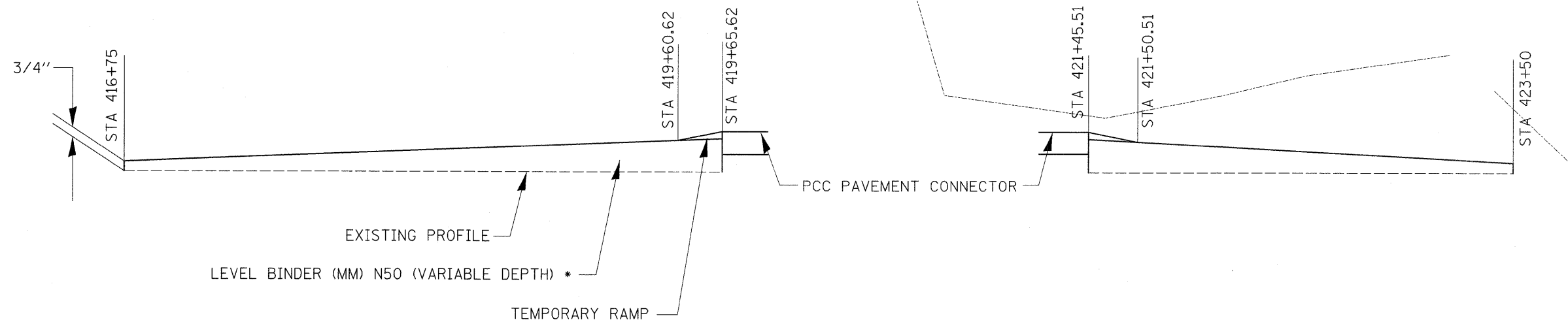
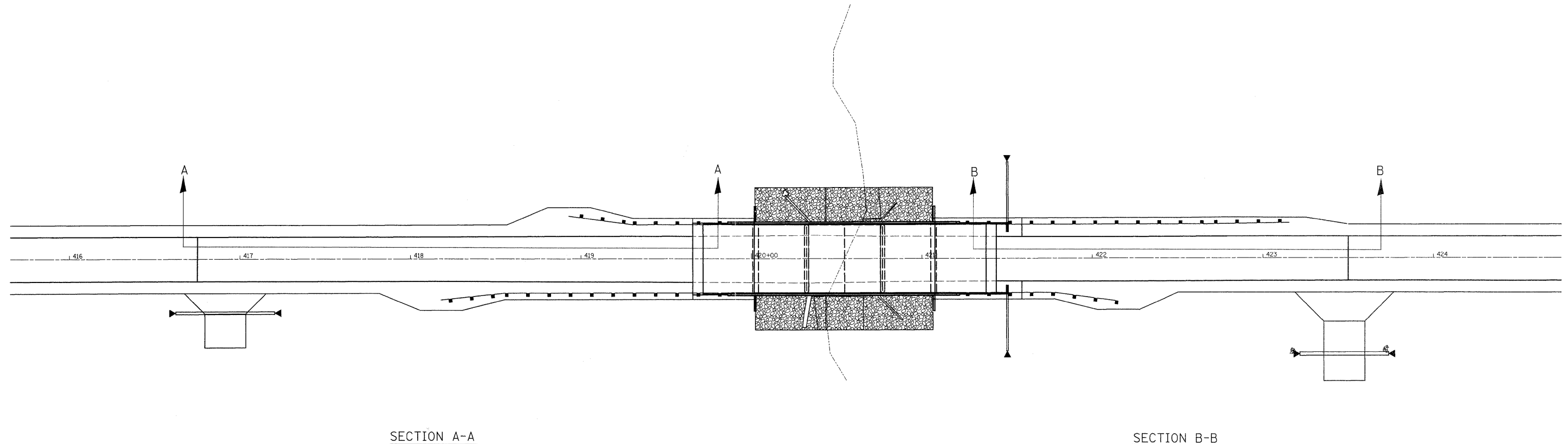


LEVEL BINDER (MM) N50 DETAIL

STA. 420 + 54.63
SN 052-0080



* LEVEL BINDER TO BE 1 1/2" LOWER THAN TOP OF PCC CONNECTOR TO ACCOMMODATE FOR FINAL SURFACE.

FILE NAME =	USER NAME = grantpm	DESIGNED -	REVISED -	STATE OF ILLINOIS DEPARTMENT OF TRANSPORTATION	LEVEL BINDER (MM) N50 DETAIL SN 052-0080			F.A.P. RTE. 316	SECTION .	COUNTY LEE	TOTAL SHEETS 216	SHEET NO. 165
ct:\pwork\pwork\grantpm\dms41810\0210807-sht-details.dgn		DRAWN -	REVISED -		SCALE:	SHEET NO.	OF SHEETS	STA.	TO STA.	CONTRACT NO. 64D57		
PLOT SCALE = 38.8888' / 1in.		CHECKED -	REVISED -		ILLINOIS FED. AID PROJECT							
PLOT DATE = Tue Aug 23 06:20:35 2011		DATE -	REVISED -									