

F.A.P. RTE.	SECTION	COUNTY	TOTAL SHEETS	SHEET NO.
326	(5CS,13C,108,109R)	KENDALL	931	157
STA. TO STA.				
FED. ROAD DIST. NO.			ILLINOIS	FED. AID PROJECT

DESCRIPTION	STATION	NORTHING	EASTING
PC	21+187.833	552628.209	290583.116
PT	21+237.175	552677.118	290589.641
PI	21+286.490	552726.317	290593.397
POT	21+287.058	552726.882	290593.440
PI	21+313.047	552752.796	290595.418
PT	21+339.032	552778.638	290598.176
POT	21+392.484	552831.789	290603.850
PC	21+870.290	553306.895	290654.564
PI	21+945.942	553382.120	290662.594
PT	22+016.576	553438.238	290713.329

DESCRIPTION	STATION	NORTHING	EASTING
POT	1+000.000	552929.881	290513.753
CENTERLINE IL 47	1+100.000	552918.883	290613.147
POT	1+200.000	552907.884	290712.540

DESCRIPTION	STATION	NORTHING	EASTING
POT	1+000.000	553044.481	290525.987
CENTERLINE IL 47	1+100.000	553033.306	290625.361
POT	1+200.000	553022.039	290724.724

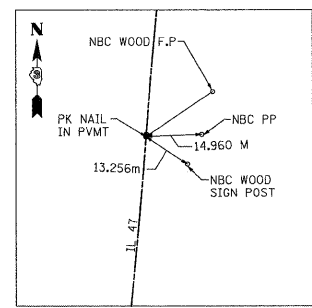
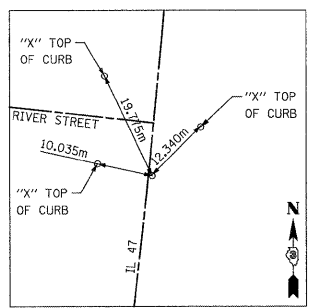
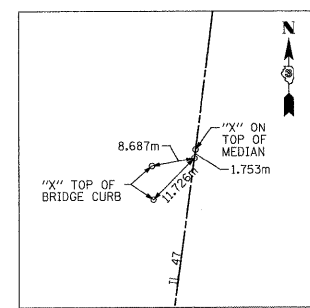
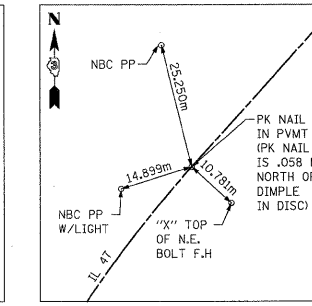
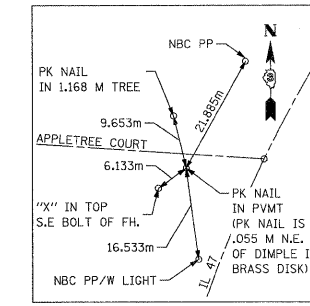
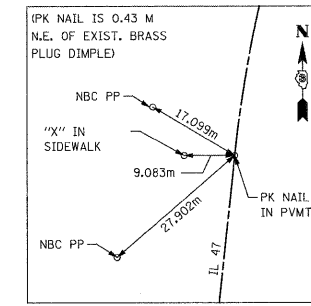
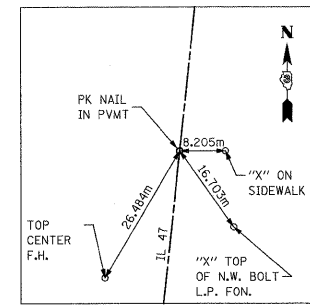
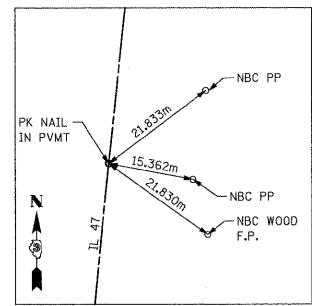
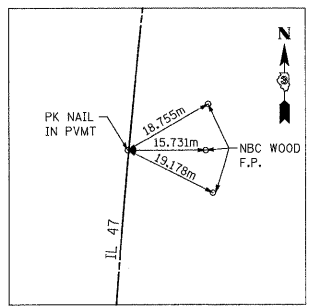
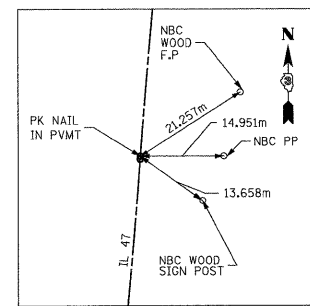
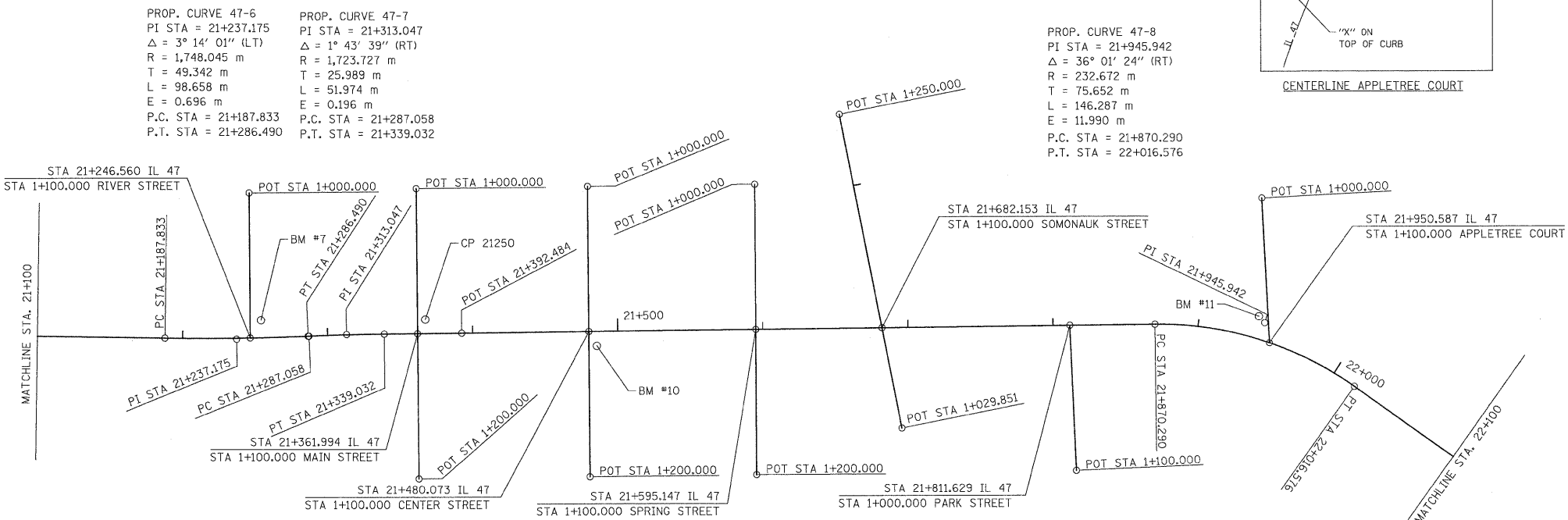
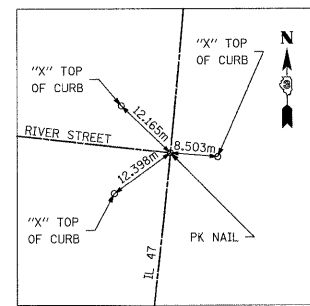
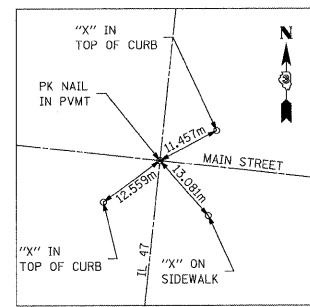
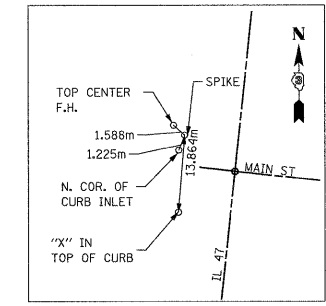
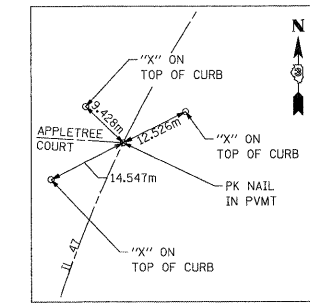
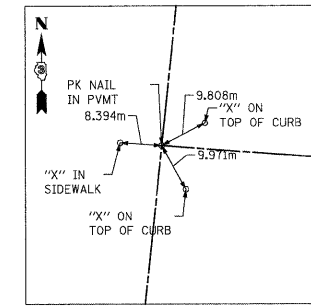
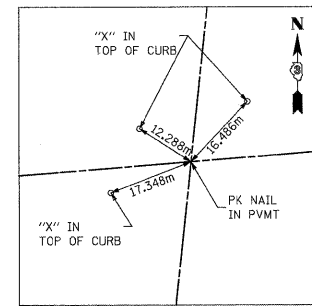
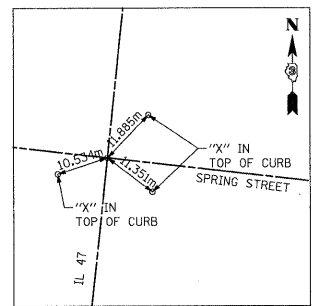
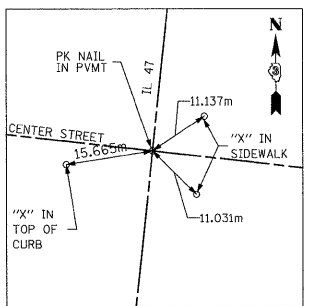
DESCRIPTION	STATION	NORTHING	EASTING
POT	1+029.851	553125.298	290704.531
CENTERLINE IL 47	1+100.000	553125.298	290704.531
POT	1+150.000	553108.112	290485.054

DESCRIPTION	STATION	NORTHING	EASTING
POT	1+000.000	552697.642	290490.521
CENTERLINE IL 47	1+100.000	552686.541	290589.903

DESCRIPTION	STATION	NORTHING	EASTING
POT	1+000.000	552812.397	290501.212
CENTERLINE IL 47	1+100.000	552801.471	290600.614
POT	1+200.000	552790.591	290700.020

DESCRIPTION	STATION	NORTHING	EASTING
CENTERLINE IL 47	1+000.000	553248.566	290648.338
POT	1+100.000	553241.214	290748.067

DESCRIPTION	STATION	NORTHING	EASTING
POT	1+000.000	553390.386	290576.783
CENTERLINE IL 47	1+100.000	553383.707	290676.560



BENCHMARK #7
ELEV. 186.477
CHISELED "X" E EDGE MANHOLE RIM AT NW QUADRANT IL 47 / RIVER STREET STA. 21+254.273 - 11.985 LT.

BENCHMARK #10
ELEV. 191.381
CHISELED "X" TOP BOLT ON HYDRANT AT NE QUADRANT IL 47 / CENTER STREET STA. 21+485.896 - 9.673 RT.

BENCHMARK #11
ELEV. 194.408
CHISELED "X" TOP BOLT ON HYDRANT AT SW QUADRANT IL 47 / APPLETREE COURT STA. 21+938.887 - 15.028 LT.

NAME	DATE

ILLINOIS DEPARTMENT OF TRANSPORTATION
ALIGNMENT AND TIES
FAP 326 (IL RTE. 47)
3 OF 5
DRAWN BY _____
CHECKED BY _____
DATE _____

FILE: 157alignshet3.dgn
PLOTTED: 8/13/2011

HMG JOB NO. 5122