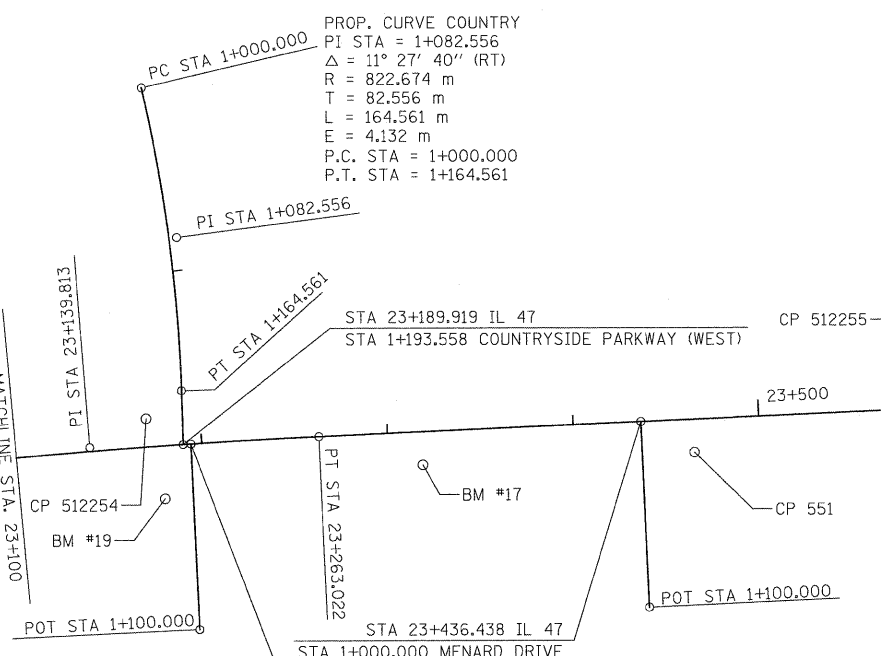
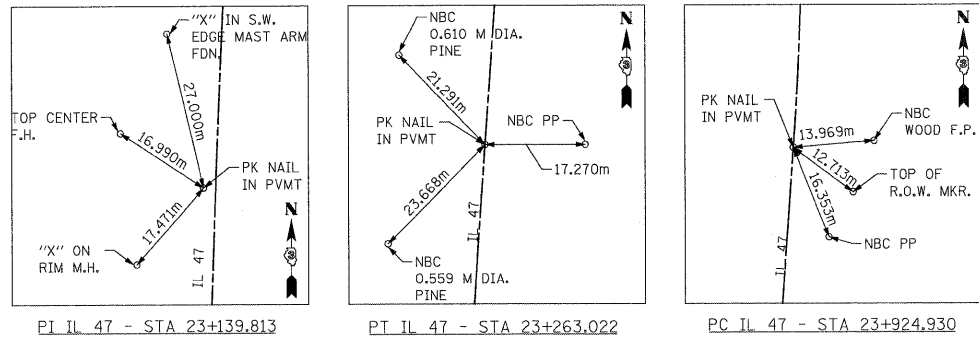
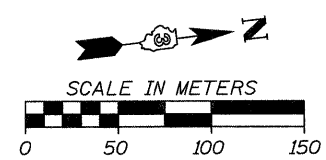


F.A.P. RTE.	SECTION	COUNTY	TOTAL SHEETS	SHEET NO.
326	(5CS,13C,108,109)R	KENDALL	931	159
STA.		TO STA.		
FED. ROAD DIST. NO.		ILLINOIS FED. AID PROJECT		

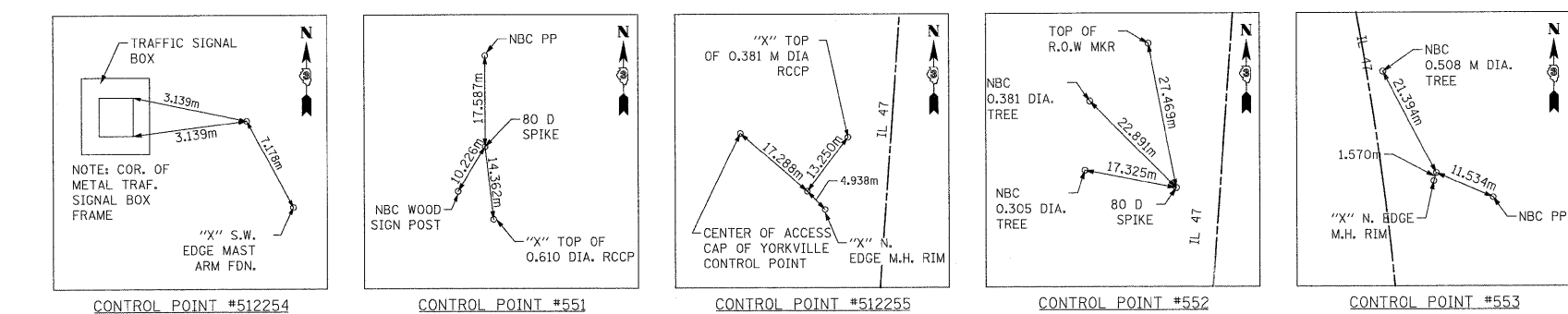
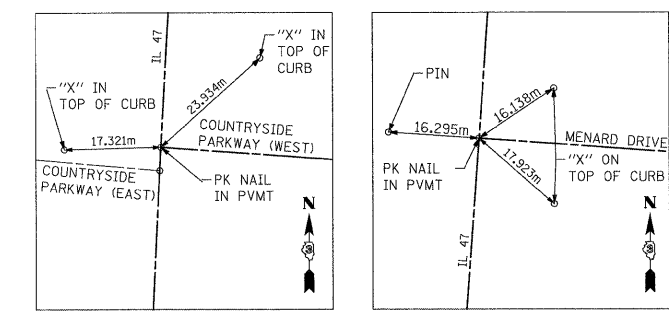
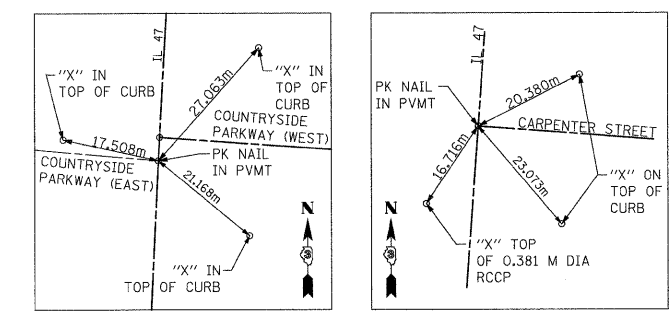


DESCRIPTION	STATION	NORTHING	EASTING
PC	1+000.000	554565.040	290719.937
PI	1+082.556	554574.257	290801.977
PT	1+164.561	554566.989	290884.213
CENTERLINE IL 47	1+193.558	554564.436	290913.096
CENTERLINE IL 47	1+000.000	554568.626	290913.318
POT	1+100.000	554561.451	291013.060

DESCRIPTION	STATION	NORTHING	EASTING
CENTERLINE IL 47	1+000.000	554810.358	290930.192
POT	1+050.000	554803.126	291029.930

DESCRIPTION	STATION	NORTHING	EASTING
CENTERLINE IL 47	1+000.000	554983.930	290942.776
POT	1+050.000	554976.389	291042.491

DESCRIPTION	STATION	NORTHING	EASTING
PI	23+139.813	554514.416	290908.736
PT	23+263.022	554637.396	290917.652
PC	23+924.930	555297.571	290965.515
PI	24+085.726	555457.946	290977.142
PT	24+239.480	555603.488	290908.785
PC	24+316.333	555673.051	290876.114
PI	24+477.396	555818.835	290807.643
PT	24+636.081	555978.285	290784.905
POT	24+742.667	556083.804	290769.857



BENCHMARK #17
 ELEV. 195.249
 80 D SPIKE IN PP
 THIRD PP NORTH OF
 COUNTRYSIDE PARKWAY
 STA. 23+318.276 - 17.659 RT.

BENCHMARK #19
 ELEV. 196.621
 TOP SE BOLT ON HYDRANT
 AT SE QUADRANT
 IL 47 / COUNTRYSIDE PARKWAY
 STA. 23+178.064 - 28.469 RT.

NAME	DATE

ILLINOIS DEPARTMENT OF TRANSPORTATION
ALIGNMENT AND TIES
FAP 326 (IL RTE. 47)
5 OF 5
 DATE _____ DRAWN BY _____
 CHECKED BY _____

FILE: 159a1.gnsht45.dgn
 PLOTTED: 8/13/2011