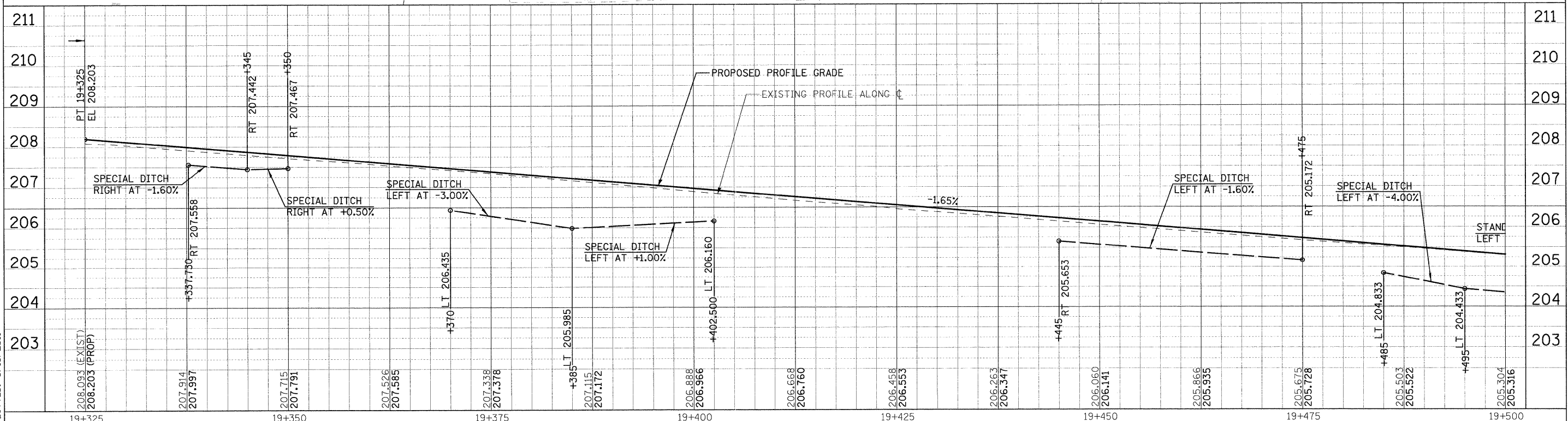
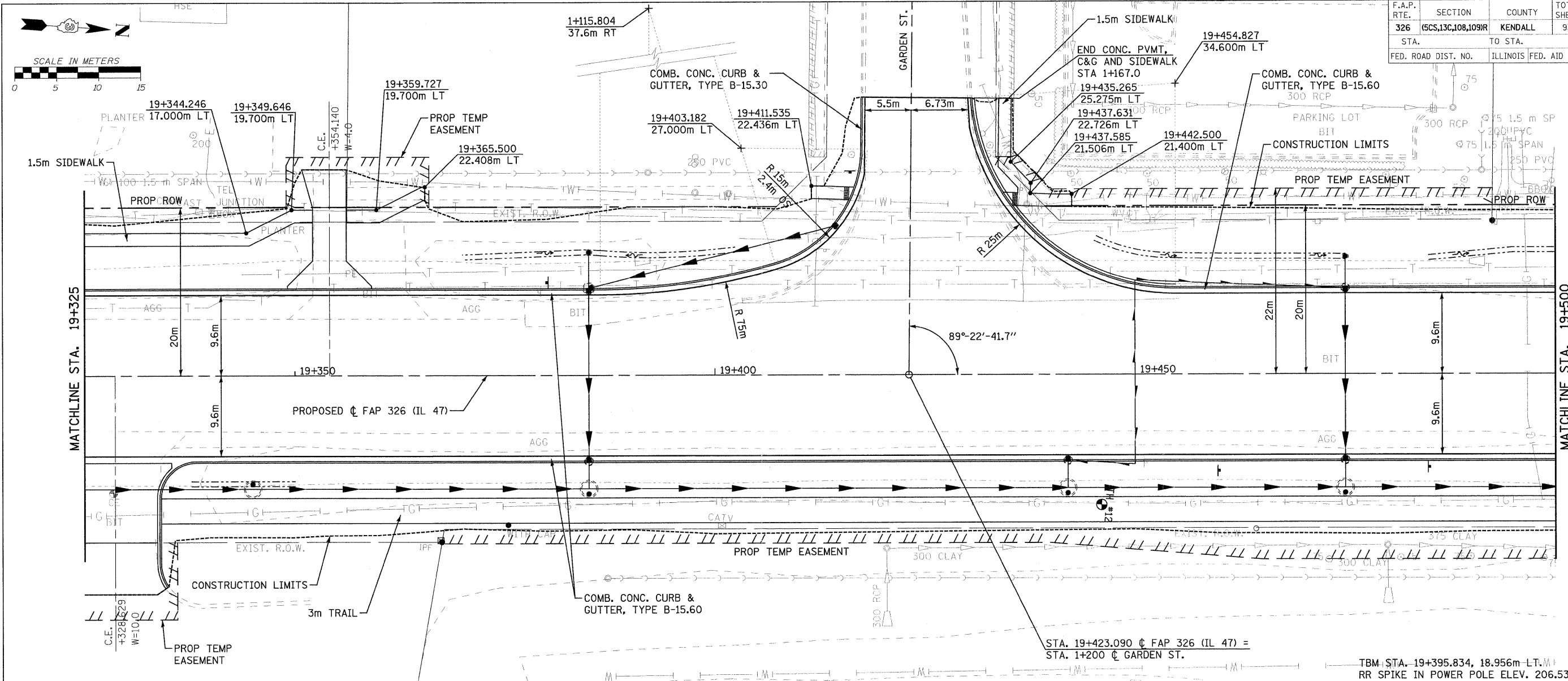


F.A.P. RTE.	SECTION	COUNTY	TOTAL SHEETS	SHEET NO.
326	(6S,13C,108,109)R	KENDALL	931	165
STA. TO STA.		ILLINOIS FED. AID PROJECT		
FED. ROAD DIST. NO.				



FILE: 165pp47_05.dgn
PLOTTED: 8/13/2011

Sheet: 9
Angle: 93.9081
Cntr: P.11.47

HMG JOB NO. 5122