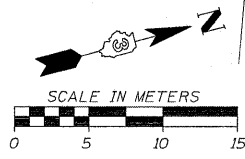
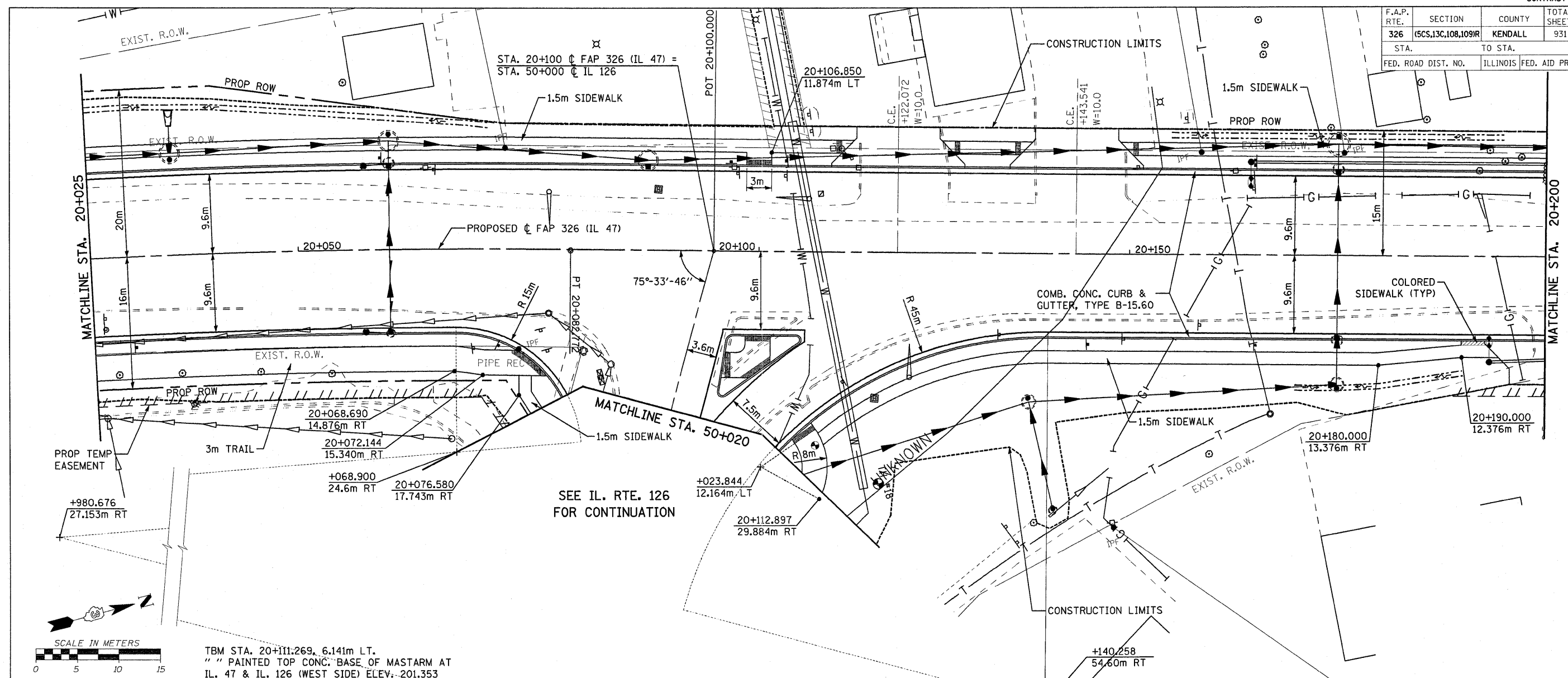
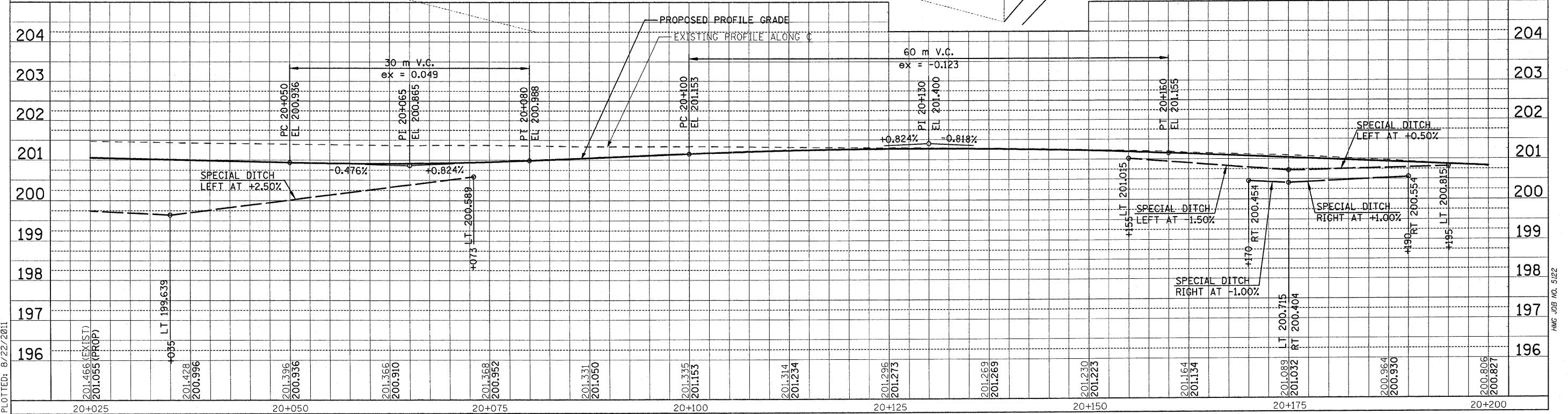


F.A.P. RTE.	SECTION	COUNTY	TOTAL SHEETS	SHEET NO.
326	(5CS,13C,108,109)R	KENDALL	931	169
STA.		TO STA.		
FED. ROAD DIST. NO.		ILLINOIS FED. AID PROJECT		



TBM STA. 20+111:269, 6.141m LT.  
 " " PAINTED TOP CONC. BASE OF MASTARM AT  
 IL. 47 & IL. 126 (WEST SIDE) ELEV. 201.353



Sheet: 13  
 Angle: 74.7702  
 Chalm: P-IL47  
 FILE: 169pp47.13.dgn  
 PLOTTED: 8/22/2011

HMG JOB NO. 512